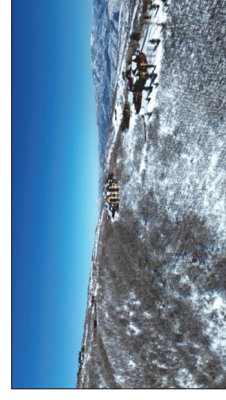
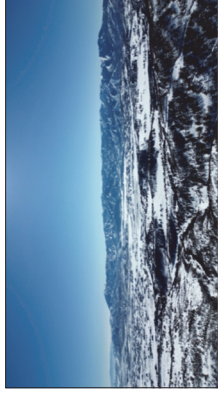
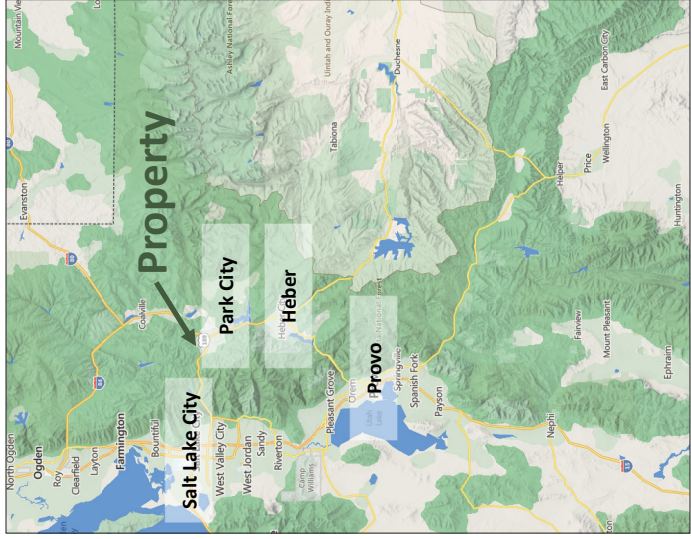


NEW LISTING

See more information at www.hciutah.com

Silver Summit Residential Development Land

40 acres in Summit County, Utah



EXECUTIVE SUMMARY:

List Price: \$1,200,000

Mike Nelson | Amy Fromm

801-482-7565 | mike@hciutah.com

Notice: This information is believed to be accurate, but no warranty is expressed or implied. Highland Commercial insists that interested parties conduct their own research and investigations. The property is offered subject to prior sale, price change, and withdrawal without notice. No obligations will be created unless a purchase contract is signed by both buyer and seller. We welcome the cooperation of participating brokers; please contact us for our commission-sharing policies. All images and materials are copyright protected and are the property of Highland Commercial.

- 40 acres located in Silver Summit, Summit County, Utah
- Summit County reports parcel SS-154-G is a grandfathered parcel upon which one home could be built
- Zoned Ag-80 - 80-acre min lot size (cannot be subdivided further)
- Beautiful views of Park City, surrounding mountains, and ski resorts
- Elevation ranges from 7,100 to 7,500 feet
- 2024 Taxes: \$4,564.30 (Summit County parcel: SS-154-G)
- Located near Jeremy Ranch, Glenwild, and Kimball Junction
- 12 miles to Park City, 32 miles East of Salt Lake City, Utah
- Within 30-minute drive of Deer Creek Reservoir, Jordanelle Reservoir, Rockport Reservoir, and Echo Reservoir



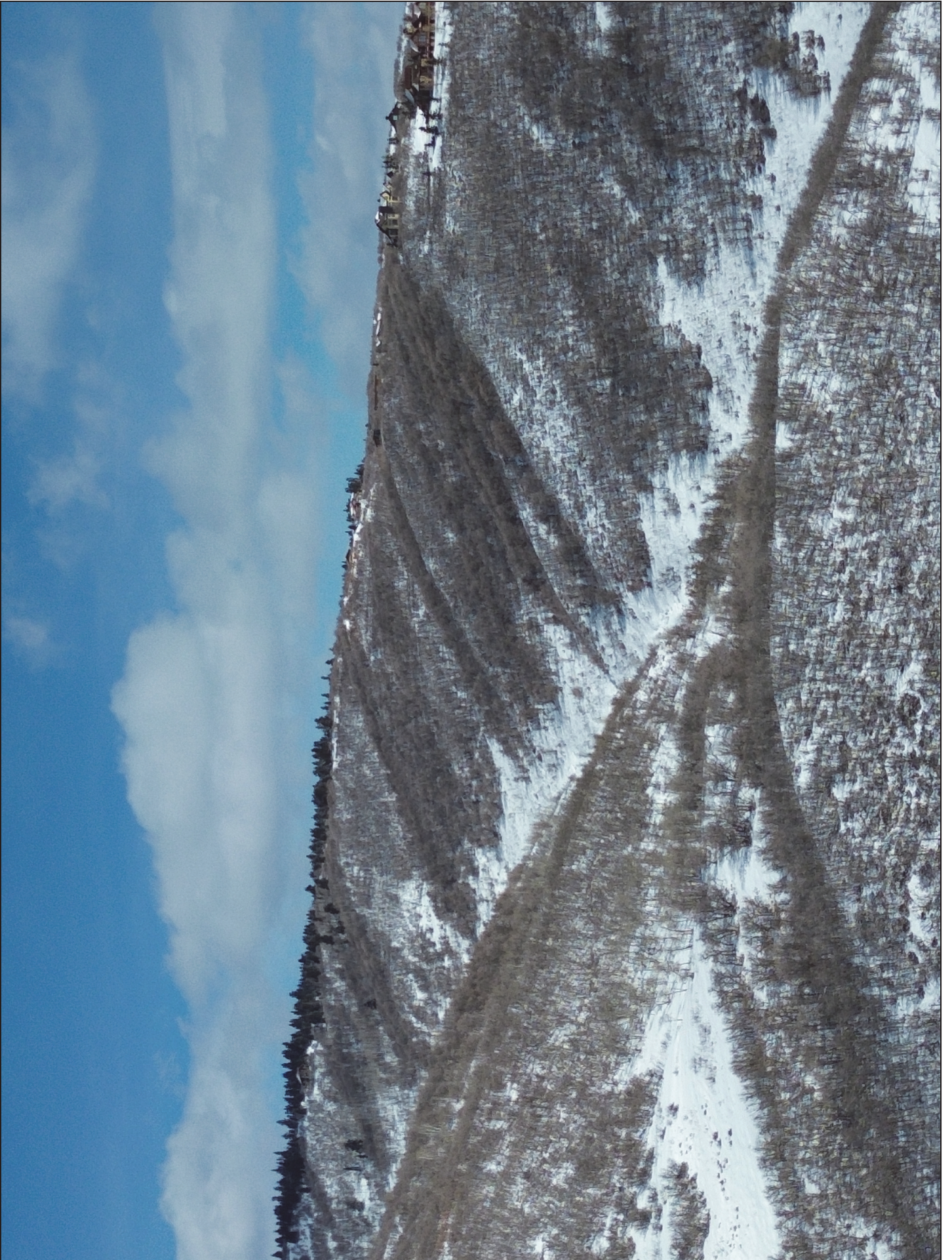
Highland Commercial, Inc.

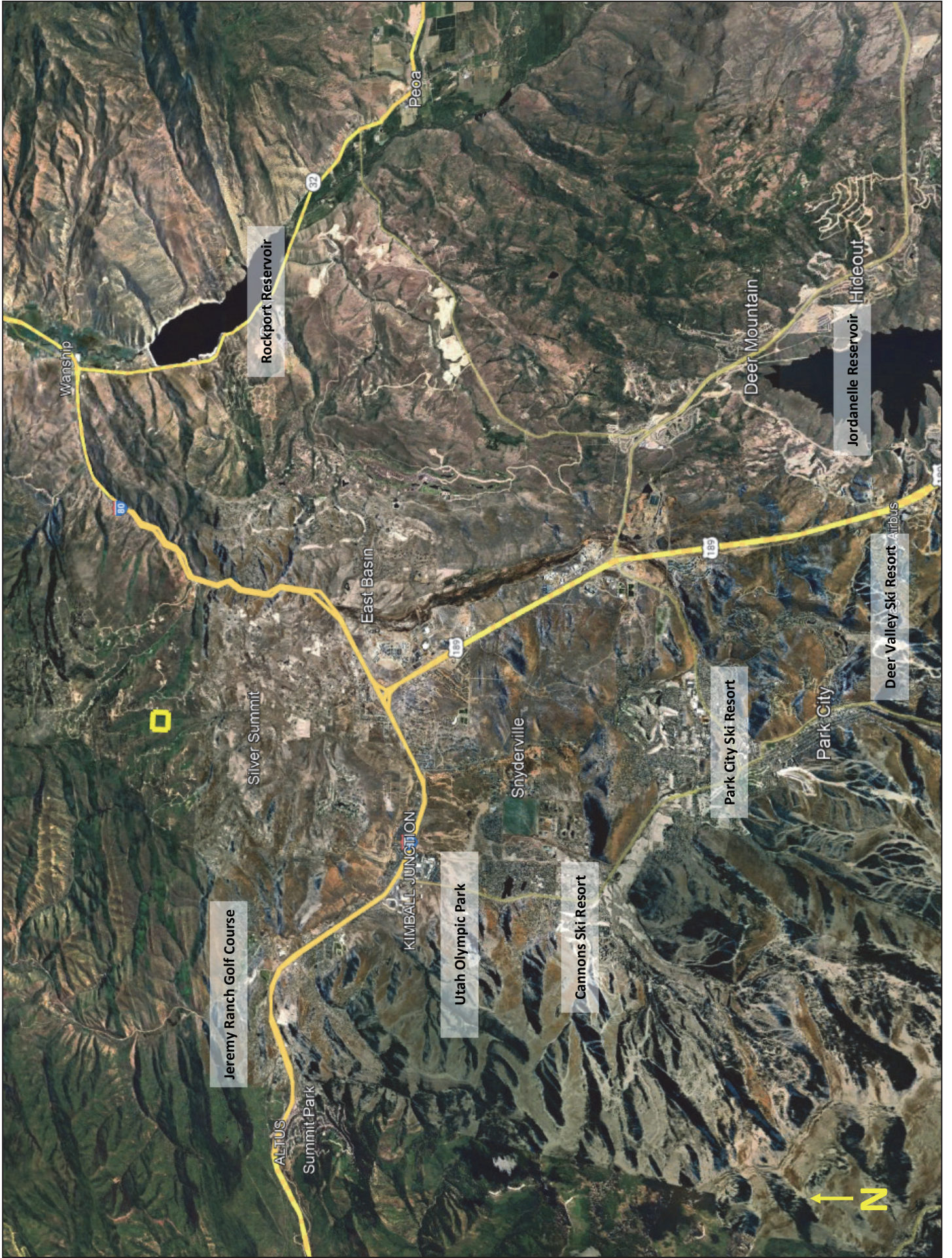
2733 East Parley's Way, Suite 208

Salt Lake City, UT 84109

801-487-6100

www.hciutah.com





Rockport Reservoir

Jordanelle Reservoir

Deer Mountain

Deer Valley Ski Resort

Park City Ski Resort

Park City

Jeremy Ranch Golf Course

Utah Olympic Park

Cannons Ski Resort

Wanship

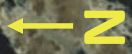
Peoa

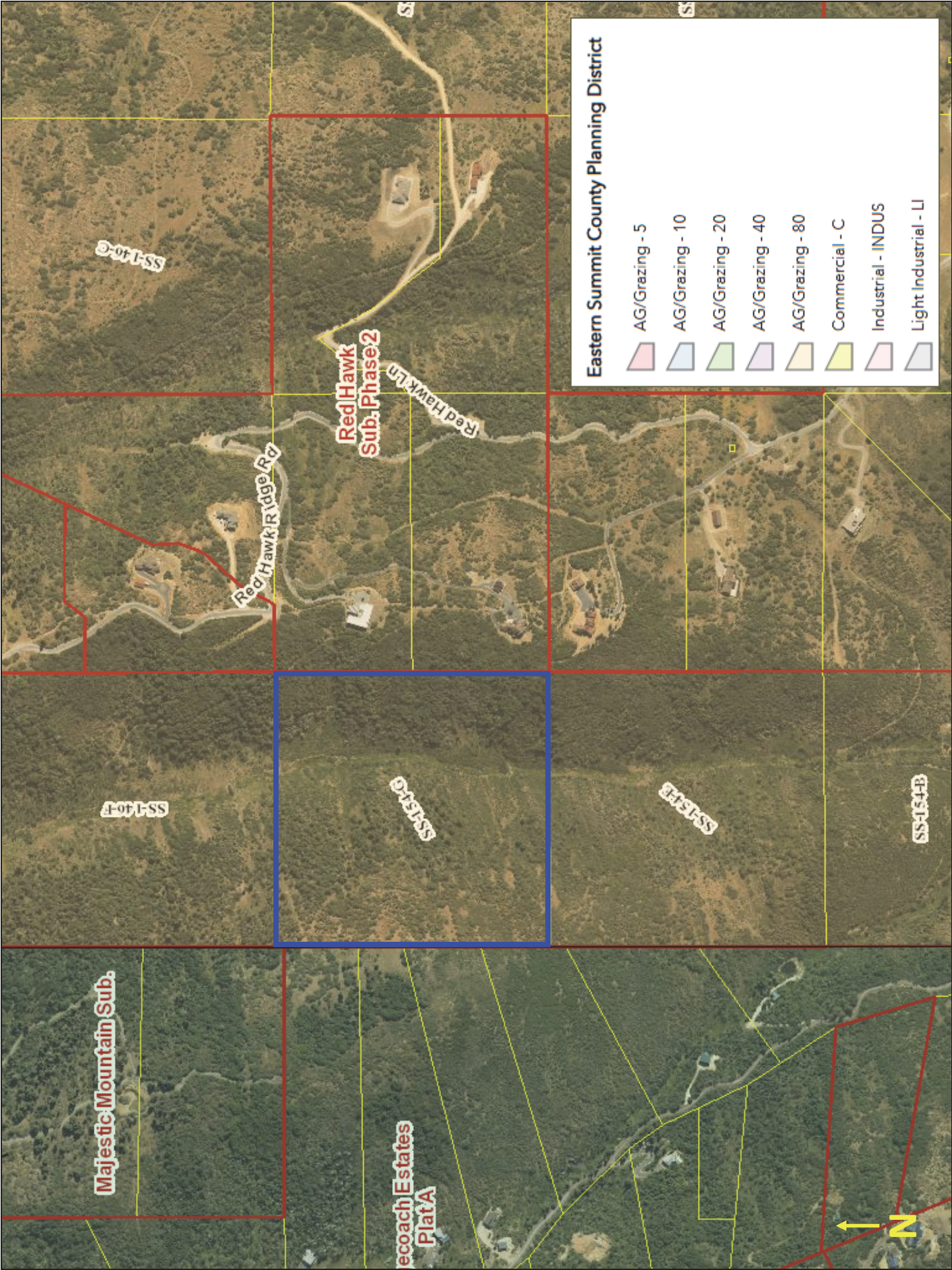
East Basin

Snyderville









KIMBALL JUNCTION

Summit Park





Eastern Summit County Planning District

-  AG/Grazing - 5
-  AG/Grazing - 10
-  AG/Grazing - 20
-  AG/Grazing - 40
-  AG/Grazing - 80
-  Commercial - C
-  Industrial - INDUS
-  Light Industrial - LI

Majestic Mountain Sub.

**Seacoast Estates
Plat A**

Red Hawk Ridge Rd

**Red Hawk
Sub. Phase 2**



SS-140-F

SS-140-F

SS-140-F

SS-140-B

SS-140-F