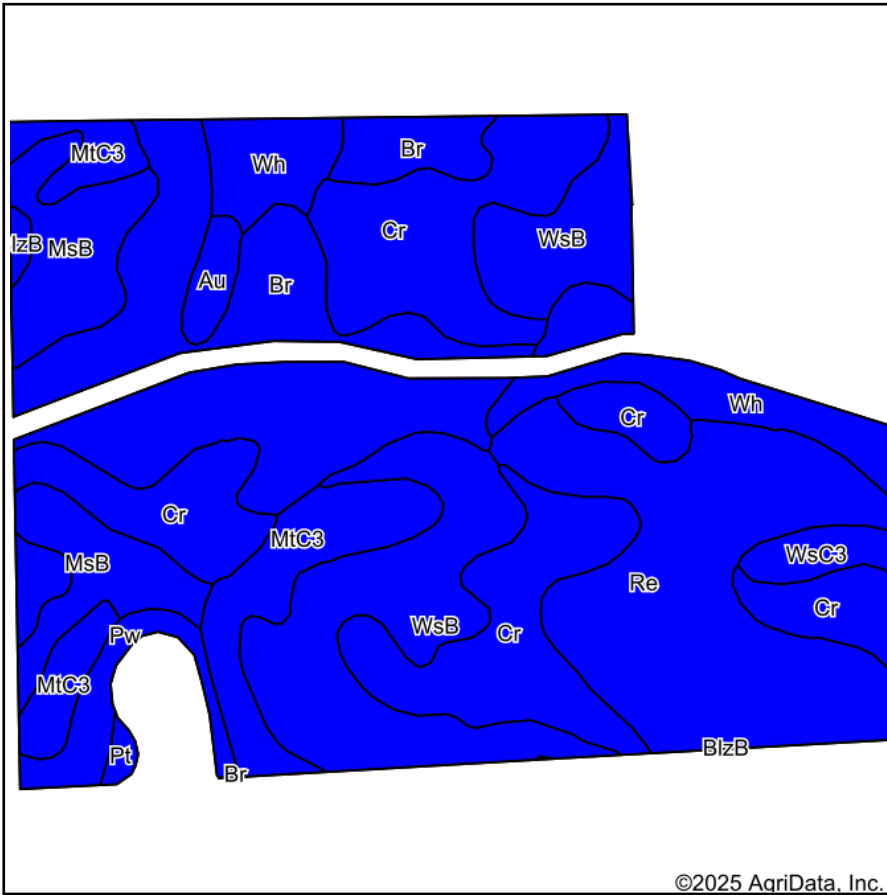
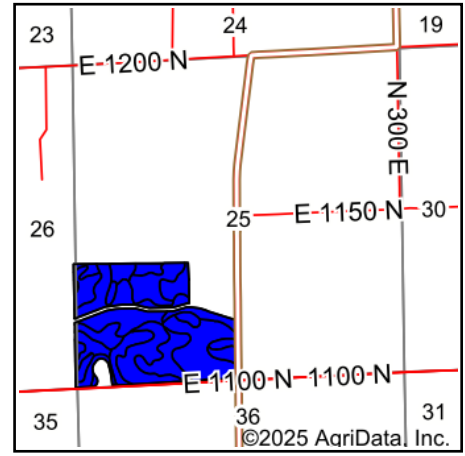


Soils Map



Soils data provided by USDA and NRCS.



State: **Indiana**
 County: **Miami**
 Location: **25-29N-4E**
 Township: **Perry**
 Acres: **98.07**
 Date: **2/4/2025**



Maps Provided By:



© AgriData, Inc. 2023

www.AgriDataInc.com



Area Symbol: IN103, Soil Area Version: 28

Code	Soil Description	Acres	Percent of field	Non-Irr Class Legend	Non-Irr Class *c	Corn Bu	Soybeans Bu	*n NCCPI Overall
Cr	Crosier loam, 0 to 2 percent slopes	22.48	23.0%		Ilw	154	50	69
Br	Brookston loam	17.86	18.2%		Ilw	172	49	77
Re	Rensselaer loam, 0 to 1 percent slopes	16.86	17.2%		Ilw	167	49	83
WsB	Wawasee sandy loam, 2 to 6 percent slopes	14.31	14.6%		Ile	126	44	67
MtC3	Morley silty clay loam, 6 to 12 percent slopes, severely eroded	7.42	7.6%		Ive	105	37	52
MsB	Glynwood silt loam, 2 to 6 percent slopes	7.36	7.5%		Ile	133	46	68
Wh	Washtenaw silt loam	6.64	6.8%		Ilw	165	49	94
Pw	Pewamo silty clay loam, 0 to 1 percent slopes	2.20	2.2%		Ilw	157	47	75
WsC3	Wawasee loam, 6 to 12 percent slopes, severely eroded	1.32	1.3%		Ive	132	46	54
Au	Aubbeenaubee sandy loam, 0 to 2 percent slopes	1.01	1.0%		Ilw	135	44	77
Pt	Patton silty clay loam	0.31	0.3%		Ilw	175	49	81
BlzB	Blount loam, interlobate moraines, 0 to 2 percent slopes	0.30	0.3%		Ilw	142	52	68
Weighted Average					2.18	150.5	47.2	*n 73

*n: The aggregation method is "Weighted Average using all components"

*c: Using Capabilities Class Dominant Condition Aggregation Method