

**Common Land Unit**  

 Tract Boundary  
 PLSS  
 Non-Cropland  
 Cropland

**Wetland Determination Identifiers**

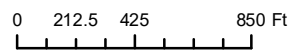
- Restricted Use
- ▼ Limited Restrictions
- Exempt from Conservation Compliance Provisions

**Unless Otherwise Noted:**

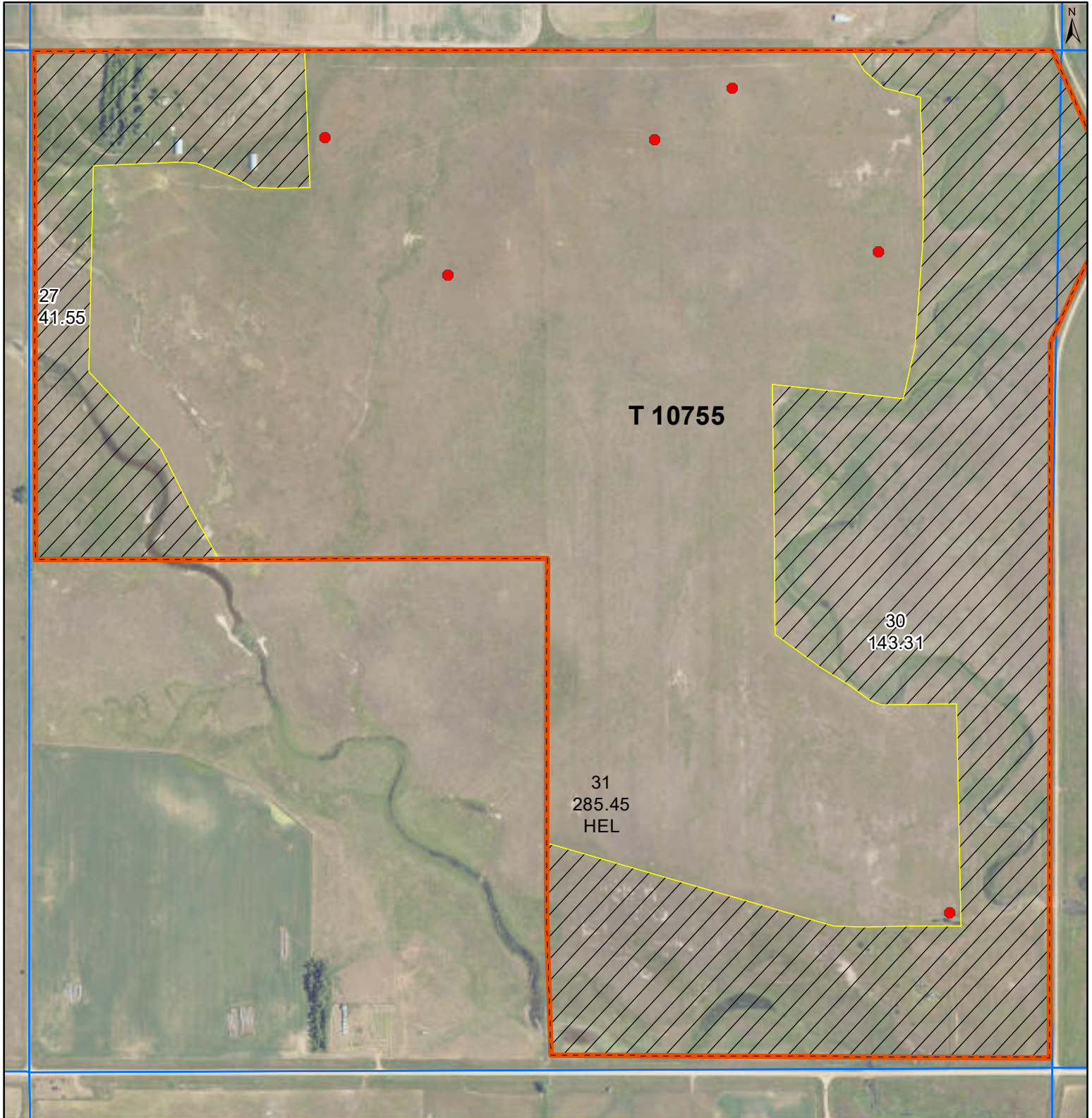
- |                                |                              |
|--------------------------------|------------------------------|
| Barley = Spring for Grain      | Soybeans = Common for Grain  |
| Canola = Spring for Processing | Sunflowers = Oil for Grain   |
| Corn = Yellow for Grain        | Wheat = Spring for Grain     |
| Flax = Common for Grain        | All fields are non-irrigated |
| Oats = Spring for Grain        | Shares are 100% to operator  |

2025 Program Year  
 2023 Imagery

**S9 T145N R90W**  
 Phy Cnty: Mercer



United States Department of Agriculture (USDA) Farm Service Agency (FSA) maps are for FSA Program administration only. This map does not represent a legal survey or reflect actual ownership; rather it depicts the information provided directly from the producer and/or National Agricultural Imagery Program (NAIP) imagery. The producer accepts the data 'as is' and assumes all risks associated with its use. USDA-FSA assumes no responsibility for actual or consequential damage incurred as a result of any user's reliance on this data outside FSA Programs. Wetland identifiers do not represent the size, shape, or specific determination of the area. Refer to your original determination (CPA-026 and attached maps) for exact boundaries and determinations or contact USDA Natural Resources Conservation Service (NRCS).  
 Map Created January 23, 2025



**Common Land Unit**  
 Tract Boundary  
 PLSS  
 Non-Cropland  
 Cropland

**Wetland Determination Identifiers**

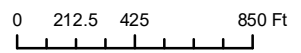
- Restricted Use
- Limited Restrictions
- Exempt from Conservation Compliance Provisions

**Unless Otherwise Noted:**

- Barley = Spring for Grain
- Canola = Spring for Processing
- Corn = Yellow for Grain
- Flax = Common for Grain
- Oats = Spring for Grain
- Soybeans = Common for Grain
- Sunflowers = Oil for Grain
- Wheat = Spring for Grain
- All fields are non-irrigated
- Shares are 100% to operator

2025 Program Year  
2023 Imagery

**S16 T145N R90W**  
Phy Cnty: Mercer



United States Department of Agriculture (USDA) Farm Service Agency (FSA) maps are for FSA Program administration only. This map does not represent a legal survey or reflect actual ownership; rather it depicts the information provided directly from the producer and/or National Agricultural Imagery Program (NAIP) imagery. The producer accepts the data 'as is' and assumes all risks associated with its use. USDA-FSA assumes no responsibility for actual or consequential damage incurred as a result of any user's reliance on this data outside FSA Programs. Wetland identifiers do not represent the size, shape, or specific determination of the area. Refer to your original determination (CPA-026 and attached maps) for exact boundaries and determinations or contact USDA Natural Resources Conservation Service (NRCS).  
Map Created January 23, 2025



**Abbreviated 156 Farm Record**

**Operator Name**

CRP Contract Number(s) : None

Recon ID :

Transferred From 38-057-2012-60 :

ARCPLC G//F Eligibility None

: Eligible

**Farm Land Data**

Farmland	Cropland	DCP Cropland	WBP	EWP	WRP	GRP	Sugarcane	Farm Status	Number Of Tracts
310.40	296.64	296.64	0.00	0.00	0.00	0.00	0.0	Active	1
State Conservation	Other Conservation	Effective DCP Cropland		Double Cropped		CRP	MPL	DCP Ag.Rel. Activity	SOD
0.00	0.00	296.64		0.00		0.00	0.00	0.00	0.00

**Crop Election Choice**

ARC Individual	ARC County	Price Loss Coverage
None	WHEAT, OATS, BARLY	None

**DCP Crop Data**

Crop Name	Base Acres	CCC-505 CRP Reduction Acres	PLC Yield	HIP
Wheat	38.20	0.00	24	
Oats	67.50	0.00	45	
Barley	77.10	0.00	32	
<b>TOTAL</b>	<b>182.80</b>	<b>0.00</b>		

**NOTES**

--

**Tract Number : 10754**

Description : W2 9-145-90

FSA Physical Location : NORTH DAKOTA/MERCER

ANSI Physical Location : NORTH DAKOTA/MERCER

BIA Unit Range Number :

HEL Status : HEL field on tract.Conservation system being actively applied

Wetland Status : Tract contains a wetland or farmed wetland

WL Violations : None

**Owners**

Other Producers

Recon ID : 38-057-2012-59

**Tract Land Data**

Farm Land	Cropland	DCP Cropland	WBP	EWP	WRP	GRP	Sugarcane
310.40	296.64	296.64	0.00	0.00	0.00	0.00	0.0

**Abbreviated 156 Farm Record**

**Tract 10754 Continued ...**

State Conservation	Other Conservation	Effective DCP Cropland	Double Cropped	CRP	MPL	DCP Ag. Rel Activity	SOD
0.00	0.00	296.64	0.00	0.00	0.00	0.00	0.00

**DCP Crop Data**

Crop Name	Base Acres	CCC-505 CRP Reduction Acres	PLC Yield
Wheat	38.20	0.00	24
Oats	67.50	0.00	45
Barley	77.10	0.00	32
<b>TOTAL</b>	<b>182.80</b>	<b>0.00</b>	

**NOTES**

--

*In accordance with Federal civil rights law and U.S. Department of Agriculture (USDA) civil rights regulations and policies, the USDA, its Agencies, offices, and employees, and institutions participating in or administering USDA programs are prohibited from discriminating based on race, color, national origin, religion, sex, gender identity (including gender expression), sexual orientation, disability, age, marital status, family/parental status, income derived from a public assistance program, political beliefs, or reprisal or retaliation for prior civil rights activity, in any program or activity conducted or funded by USDA (not all bases apply to all programs). Remedies and complaint filing deadlines vary by program or incident.*

*Persons with disabilities who require alternative means of communication for program information (e.g., Braille, large print, audiotape, American Sign Language, etc.) should contact the responsible Agency or USDA's TARGET Center at (202) 720-2600 (voice and TTY) or contact USDA through the Federal Relay Service at (800) 877-8339. Additionally, program information may be made available in languages other than English.*

*To file a program discrimination complaint, complete the USDA Program Discrimination Complaint Form, AD-3027, found online at [http://www.ascr.usda.gov/complaint\\_filing\\_cust.html](http://www.ascr.usda.gov/complaint_filing_cust.html) and at any USDA office or write a letter addressed to USDA and provide in the letter all of the information requested in the form. To request a copy of the complaint form, call (866) 632-9992. Submit your completed form or letter to USDA by: (1) mail: U.S. Department of Agriculture Office of the Assistant Secretary for Civil Rights 1400 Independence Avenue, SW Washington, D.C. 20250-9410; (2) fax: (202) 690-7442; or (3) e-mail: [program.intake@usda.gov](mailto:program.intake@usda.gov). USDA is an equal opportunity provider, employer, and lender.*



**Abbreviated 156 Farm Record**

**Operator Name**

CRP Contract Number(s) : None

Recon ID :

Transferred From 38-057-2012-60 :

ARCPLC G//F Eligibility None

: Eligible

**Farm Land Data**

Farmland	Cropland	DCP Cropland	WBP	EWP	WRP	GRP	Sugarcane	Farm Status	Number Of Tracts
470.31	285.45	285.45	0.00	0.00	0.00	0.00	0.0	Active	1
State Conservation	Other Conservation	Effective DCP Cropland	Double Cropped		CRP	MPL	DCP Ag.Rel. Activity	SOD	
0.00	0.00	285.45	0.00		0.00	0.00	0.00	0.00	

**Crop Election Choice**

ARC Individual	ARC County	Price Loss Coverage
None	WHEAT, OATS, BARLY	None

**DCP Crop Data**

Crop Name	Base Acres	CCC-505 CRP Reduction Acres	PLC Yield	HIP
Wheat	36.70	0.00	24	
Oats	65.00	0.00	45	
Barley	74.20	0.00	32	
<b>TOTAL</b>	<b>175.90</b>	<b>0.00</b>		

**NOTES**

--

**Tract Number : 10755**

Description : NW;E2 16-145-90

FSA Physical Location : NORTH DAKOTA/MERCER

ANSI Physical Location : NORTH DAKOTA/MERCER

BIA Unit Range Number :

HEL Status : HEL field on tract.Conservation system being actively applied

Wetland Status : Tract contains a wetland or farmed wetland

WL Violations : None

Owners

Other Producers

Recon ID : 38-057-2012-59

**Tract Land Data**

Farm Land	Cropland	DCP Cropland	WBP	EWP	WRP	GRP	Sugarcane
470.31	285.45	285.45	0.00	0.00	0.00	0.00	0.0

Abbreviated 156 Farm Record

Tract 10755 Continued ...

State Conservation	Other Conservation	Effective DCP Cropland	Double Cropped	CRP	MPL	DCP Ag. Rel Activity	SOD
0.00	0.00	285.45	0.00	0.00	0.00	0.00	0.00

DCP Crop Data

Crop Name	Base Acres	CCC-505 CRP Reduction Acres	PLC Yield
Wheat	36.70	0.00	24
Oats	65.00	0.00	45
Barley	74.20	0.00	32
<b>TOTAL</b>	<b>175.90</b>	<b>0.00</b>	

NOTES

--

In accordance with Federal civil rights law and U.S. Department of Agriculture (USDA) civil rights regulations and policies, the USDA, its Agencies, offices, and employees, and institutions participating in or administering USDA programs are prohibited from discriminating based on race, color, national origin, religion, sex, gender identity (including gender expression), sexual orientation, disability, age, marital status, family/parental status, income derived from a public assistance program, political beliefs, or reprisal or retaliation for prior civil rights activity, in any program or activity conducted or funded by USDA (not all bases apply to all programs). Remedies and complaint filing deadlines vary by program or incident.

Persons with disabilities who require alternative means of communication for program information (e.g., Braille, large print, audiotape, American Sign Language, etc.) should contact the responsible Agency or USDA's TARGET Center at (202) 720-2600 (voice and TTY) or contact USDA through the Federal Relay Service at (800) 877-8339. Additionally, program information may be made available in languages other than English.

To file a program discrimination complaint, complete the USDA Program Discrimination Complaint Form, AD-3027, found online at [http://www.ascr.usda.gov/complaint\\_filing\\_cust.html](http://www.ascr.usda.gov/complaint_filing_cust.html) and at any USDA office or write a letter addressed to USDA and provide in the letter all of the information requested in the form. To request a copy of the complaint form, call (866) 632-9992. Submit your completed form or letter to USDA by: (1) mail: U.S. Department of Agriculture Office of the Assistant Secretary for Civil Rights 1400 Independence Avenue, SW Washington, D.C. 20250-9410; (2) fax: (202) 690-7442; or (3) e-mail: [program.intake@usda.gov](mailto:program.intake@usda.gov). USDA is an equal opportunity provider, employer, and lender.