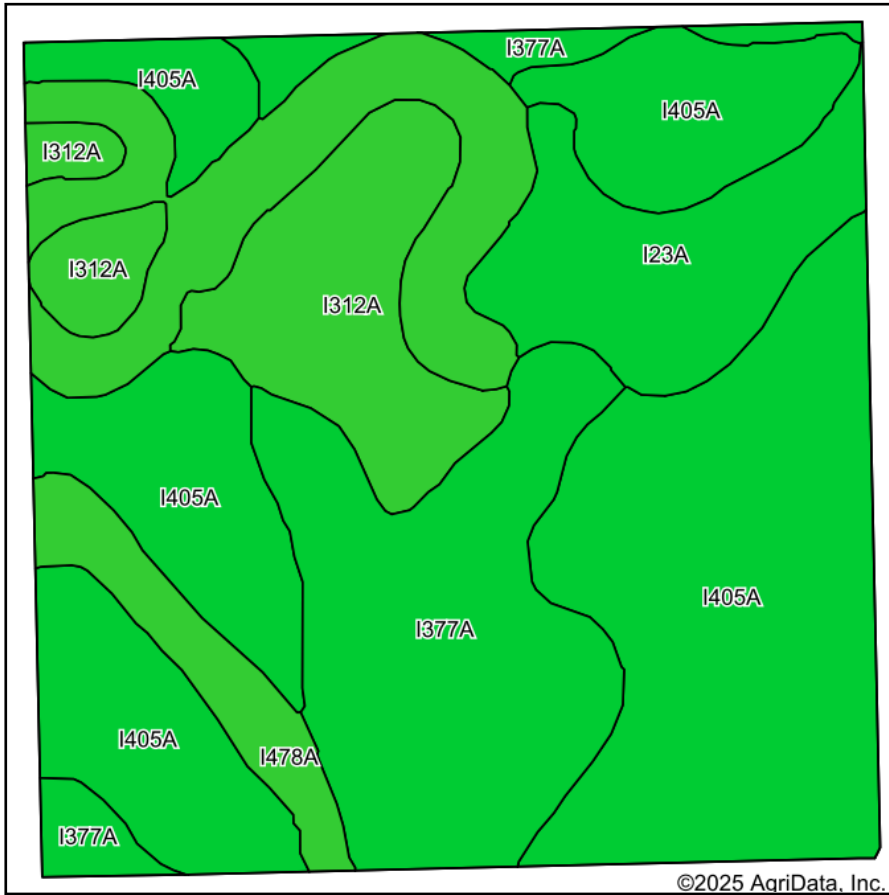
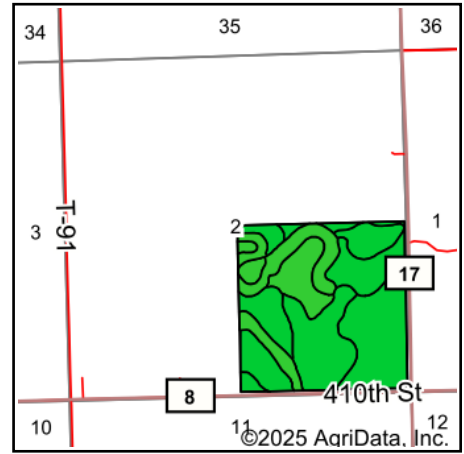


# Soils Map



Soils data provided by USDA and NRCS.








State: **Minnesota**  
 County: **Wilkin**  
 Location: **2-131N-46W**  
 Township: **Brandrup East**  
 Acres: **154.28**  
 Date: **1/27/2025**

**MIDWEST LAND** & REAL ESTATE, INC  
 712-262-3110 MANAGEMENT

Maps Provided By:  
  
 CUSTOMIZED ONLINE MAPPING  
 © AgriData, Inc. 2023 www.AgriDataInc.com



Area Symbol: MN167, Soil Area Version: 21

Code	Soil Description	Acres	Percent of field	PI Legend	Non-Irr Class *c	Productivity Index
I405A	Antler clay loam, 0 to 2 percent slopes	67.92	44.1%		Ile	89
I377A	Wheatville silt loam, 0 to 2 percent slopes	31.47	20.4%		Ile	89
I478A	Lamoure silty clay loam, 0 to 1 percent slopes, occasionally flooded	23.05	14.9%		Ilw	78
I312A	Wyndmere fine sandy loam, 0 to 2 percent slopes	17.93	11.6%		IIIe	77
I23A	Glyndon very fine sandy loam, 0 to 2 percent slopes	13.91	9.0%		Ile	89
<b>Weighted Average</b>					<b>2.12</b>	<b>86</b>

\*c: Using Capabilities Class Dominant Condition Aggregation Method