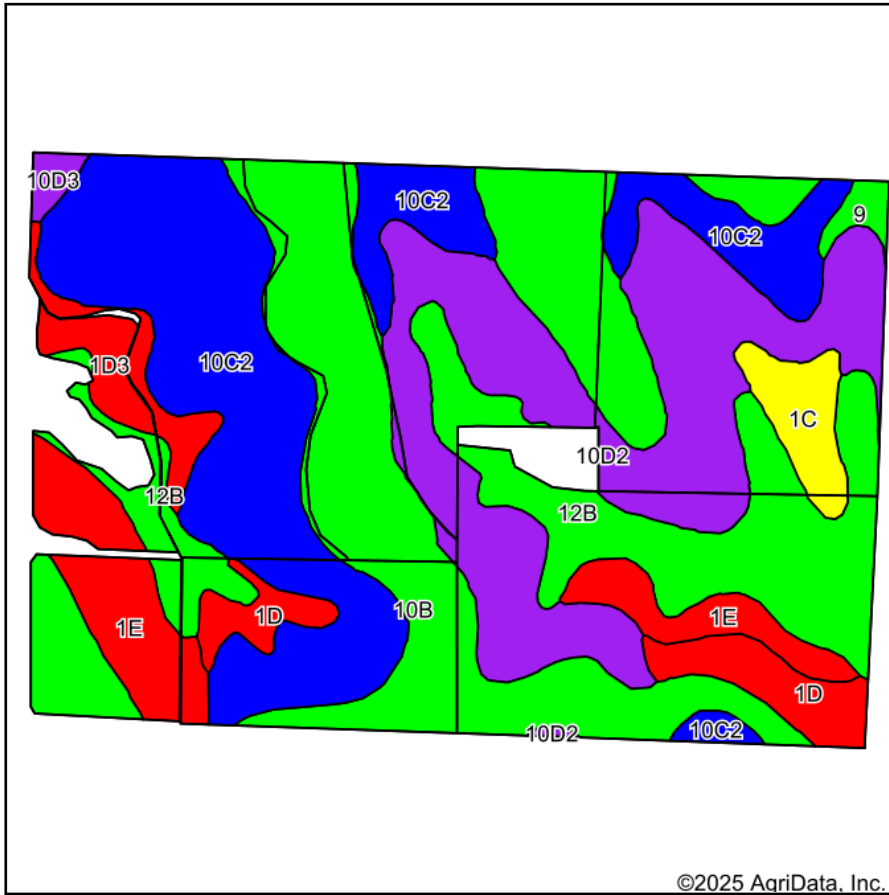
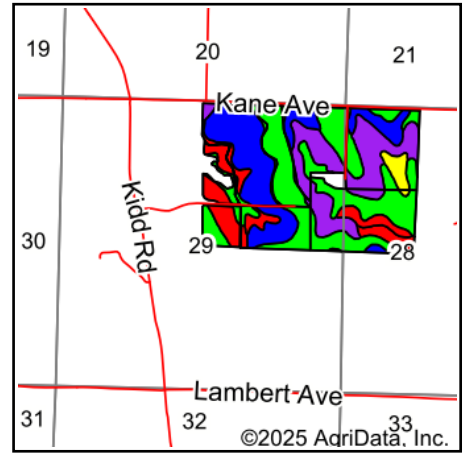


Soils Map



©2025 AgriData, Inc.

Soils data provided by USDA and NRCS.



State: **Iowa**
 County: **Mills**
 Location: **29-72N-42W**
 Township: **Center**
 Acres: **226.93**
 Date: **2/22/2025**



Maps Provided By:
surety
 CUSTOMIZED ONLINE MAPPING
 © AgriData, Inc. 2023 www.AgriDataInc.com



Area Symbol: IA129, Soil Area Version: 35

Code	Soil Description	Acres	Percent of field	CSR2 Legend	Non-Irr Class *c	Irr Class *c	Range Production (lbs/acre/yr)	*i Corn Bu	*i Soybeans Bu	CSR2**	CSR	Alfalfa hay Tons	Caucasian bluestem Tons	Common bermudagrass Tons	Orchardgrass red clover T
10B	Monona silt loam, 2 to 5 percent slopes	56.59	25.0%		IIe	IIIe	4000	232.0	67.3	95	80	7	8	7	
10C2	Monona silt loam, 5 to 9 percent slopes, eroded	54.67	24.1%		IIIe		0	211.2	61.2	86	63				
10D2	Monona silt loam, 9 to 14 percent slopes, eroded	45.55	20.1%		IIIe		0	177.6	51.5	60	53				
12B	Napier silt loam, 2 to 5 percent slopes	31.17	13.7%		IIe		0	230.4	66.8	93	77				
1E	Ida silt loam, 14 to 20 percent slopes	15.90	7.0%		IVe		0	113.6	32.9	25	35				
1D	Ida silt loam, 9 to 14 percent slopes	8.81	3.9%		IIIe		0	142.4	41.3	41	45				

Soils data provided by USDA and NRCS.



Code	Soil Description	Acres	Percent of field	CSR2 Legend	Non-Irr Class *c	Irr Class *c	Range Production (lbs/acre/yr)	*i Corn Bu	*i Soybeans Bu	CSR2**	CSR	Alfalfa hay Tons	Caucasian bluestem Tons	Common bermudagrass Tons	Orchardgrass red clover Tons
1D3	Ida silt loam, 9 to 14 percent slopes, severely eroded	6.53	2.9%		IIIe		0	126.4	36.7	32	40				
1C	Ida silt loam, 5 to 9 percent slopes	5.10	2.2%		IIIe		0	169.6	49.2	65	55				
9	Marshall silty clay loam, 0 to 2 percent slopes	1.40	0.6%		Iw		0	240.0	69.6	98	88				
10D3	Monona silt loam, 9 to 14 percent slopes, severely eroded	1.21	0.5%		IIIe		0	171.2	49.6	53	50				
Weighted Average					2.67	*-	997.5	199.4	57.8	75.8	63.7	1.7	2	1.7	

**IA has updated the CSR values for each county to CSR2.

*i Yield data provided by the ISPAID Database version 8.1.1 developed by IA State University.

*n: The aggregation method is "Weighted Average using all components"

*c: Using Capabilities Class Dominant Condition Aggregation Method

*- Irr Class weighted average cannot be calculated on the current soils data due to missing data.