

520.00±
ASSESSED ACRES

MOC: COPUS RANCH

KERN COUNTY, CALIFORNIA | WHEELER RIDGE-MARICOPA WATER STORAGE DISTRICT

EXCLUSIVELY PRESENTED BY
A DIVISION OF PEARSON COMPANIES



FRESNO

7480 N. Palm Avenue, Suite 101
Fresno, CA 93711
559.432.6200

VISALIA

3447 S. Demaree Street
Visalia, CA 93277
559.732.7300

BAKERSFIELD

4900 California Avenue, Suite 210B
Bakersfield, CA 93309
661.334.2777

www.pearsonrealty.com
CA DRE #00020875



All information contained herein is deemed reliable but not guaranteed by seller nor broker and should be independently verified by potential buyers. We assume no liability for errors or omissions. The images shown are for illustration purposes only. All images used are either licensed for use, owned by Pearson Realty, or used with permission from the respective copyright holder. Unauthorised reproduction or distribution of these images is prohibited.

OFFERING SUMMARY

Pearson Realty is proud to present the MOC Farms Portfolio, an opportunity to acquire agricultural land in one of California's prominent farming regions. This diverse portfolio features a mix of pistachios, almonds, cherries, and open ground.

Strategically located within a variety of irrigation districts, each ranch boasts diverse soil characteristics ideal for permanent crops, row crops, solar projects, and water mitigation. Historical production data is available upon request.

This portfolio offers flexibility in acquisition, as the ranches may be sold together or separately. Additionally, the 2025 crops are included in the sale, with full reimbursement to the seller for cultural costs incurred up to the date of possession.

INSTRUCTIONS FOR OFFERS

This property is being sold through a court-supervised receivership process. All prospective buyers must adhere to the following bidding qualifications and procedures. Please see the link attached for the Court Documents. A summary is below:

Qualified Bid Requirement

- **Written Submission:** All bids must be submitted in writing by the deadline set by the Receiver.
- **Purchase and Sale Agreement (PSA):** All qualified bids must be placed on a **pre-approved PSA** (available upon request).
- **Deposit:** A 5% deposit of the purchase price must be submitted with the qualified bid.

Auction and Sale Hearing

- An Auction or Sale Hearing will be scheduled after the Publication Period concludes.
- The Receiver or Agents will provide at least 14 days' notice to qualified bidders and interested parties.
- The notice will specify the initial overbid amount, minimum bidding increments, and other relevant details.
- Creditors may file objections at least 7 days before the hearing; the Receiver may reply within 2 days of the hearing.
- The Receiver will continue to market the property until the bid submission deadline.

This sale presents a unique opportunity to acquire California farmland through a structured receivership process, ensuring transparency and competitive bidding.

For inquiries, bidding instructions, or to request a PSA, please contact Pearson Realty.

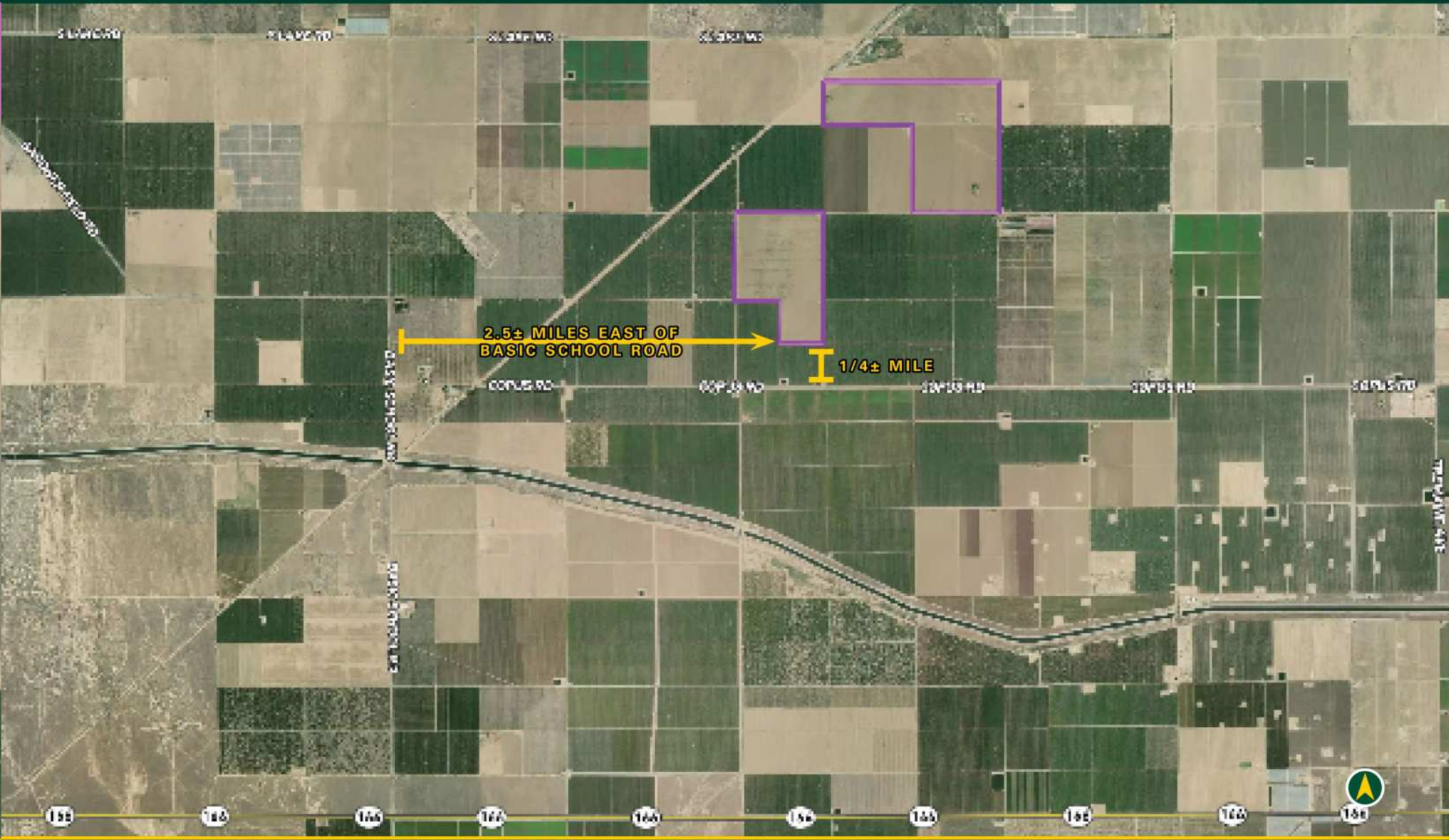
Pearson Realty does not provide legal advice. Interested parties should consult with their attorneys regarding the Court process.



MOC: COPUS RANCH
KERN COUNTY, CA

520.00± Acres

\$6,250,000
(\$12,019/Acre)

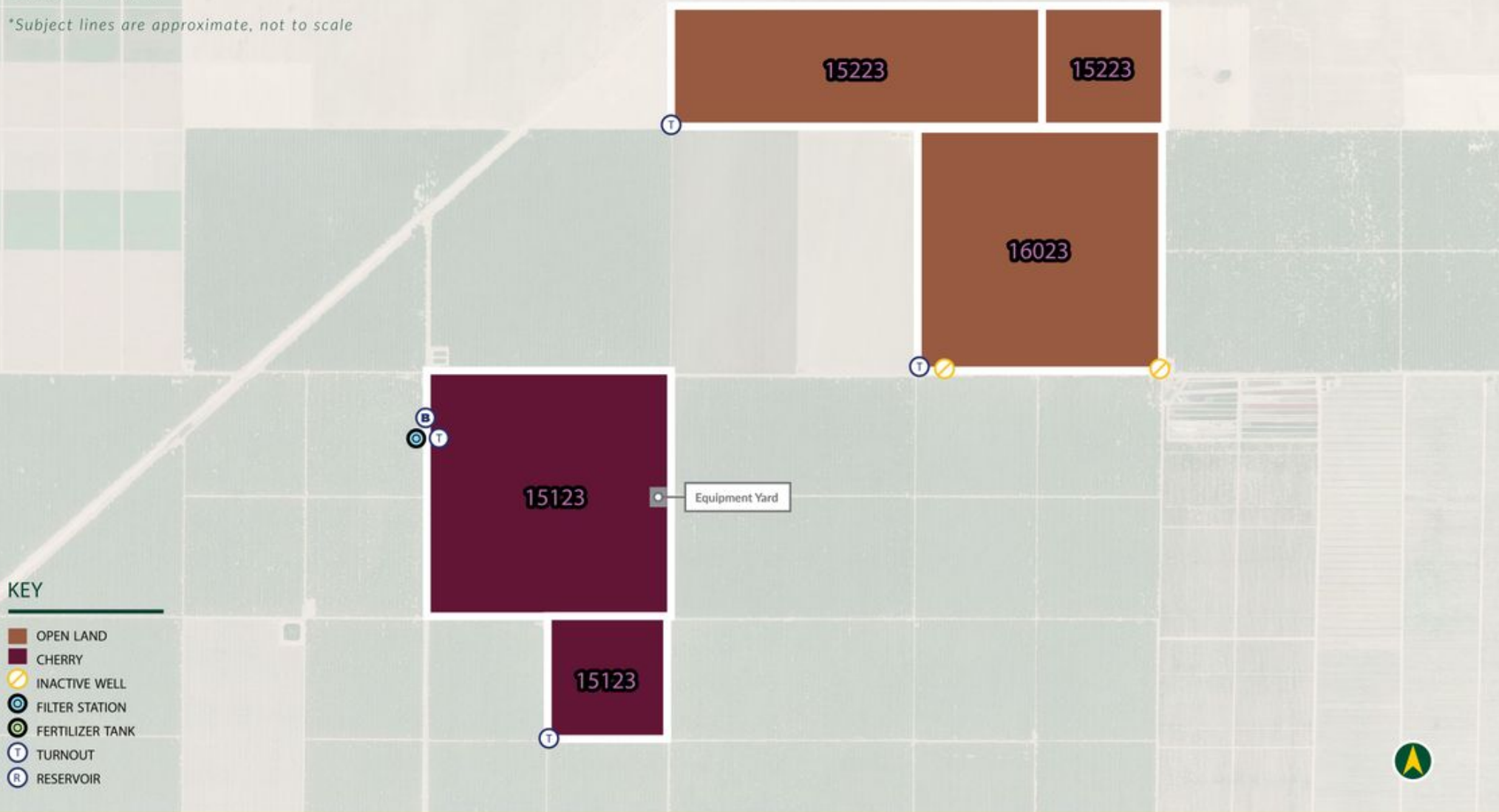


All information contained herein is deemed reliable but not guaranteed by seller nor broker and should be independently verified by potential buyers. We assume no liability for errors or omissions.



MOC: COPUS RANCH
CROP MAP*

*Subject lines are approximate, not to scale



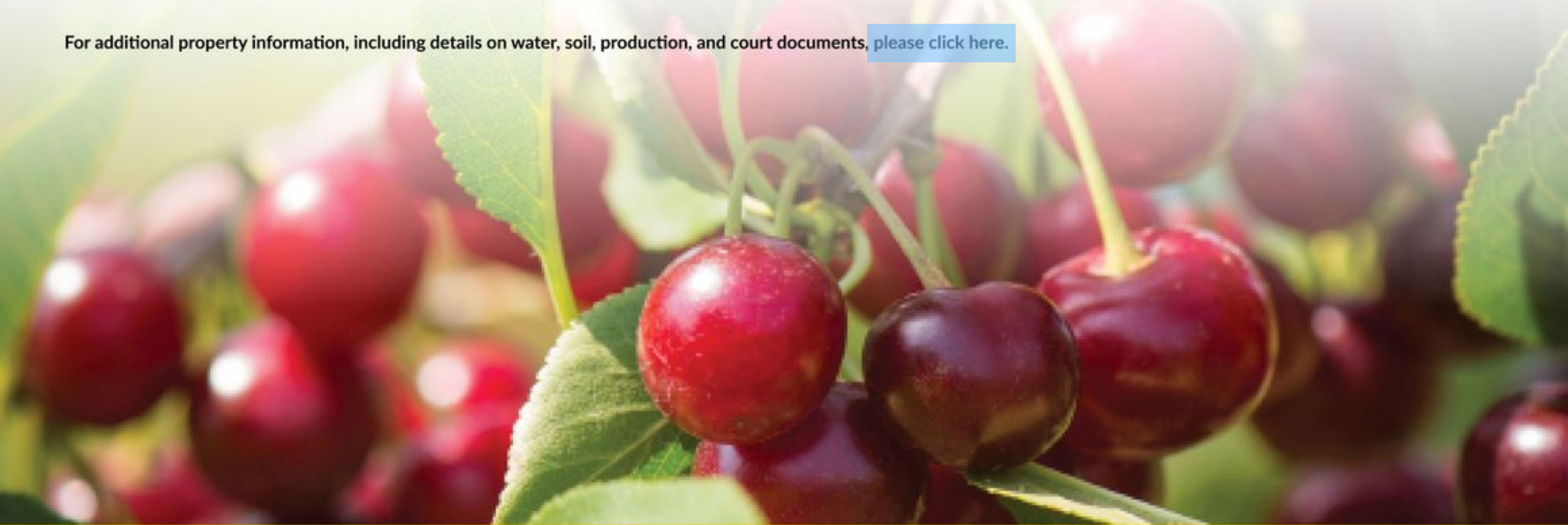
KEY

- OPEN LAND
- CHERRY
- INACTIVE WELL
- FILTER STATION
- FERTILIZER TANK
- TURNOUT
- RESERVOIR



APN NUMBER	FIELD #	OWNER	RANCH NAME	WATER DISTRICT	YEAR PLANTED	CROP	VARIETY	SPACING	ASSESSOR ACRES	PLANTED ACRES
220-130-17-00-2	15123	Grantor Fresno Clovis Investments, LLC	Copus	Wheeler Ridge	2020	Cherries	Brooks/Coral	18' x 15'	40.00	38.84
220-130-24-00-2	15123	Grantor Fresno Clovis Investments, LLC	Copus	Wheeler Ridge	2020	Cherries	Brooks/Coral	18' x 15'	160.00	155.34
220-130-05-00-7	15223	Grantor Fresno Clovis Investments, LLC	Copus	Wheeler Ridge		Open			40.00	
220-130-35-00-4	16023	Willow Avenue Investments, LLC	Copus	Wheeler Ridge		Open			160.00	
220-130-30-00-9	15223	Grantor Fresno Clovis Investments, LLC	Copus	Wheeler Ridge		Open			120.00	
220-130-35-00-4	16023	Willow Avenue Investments, LLC	Copus			Well				
TOTAL									520.00	194.18

For additional property information, including details on water, soil, production, and court documents, [please click here.](#)



MOC: COPUS RANCH
KERN COUNTY, CA

520.00± Acres

\$6,250,000
(\$12,019/Acre)



All information contained herein is deemed reliable but not guaranteed by seller nor broker and should be independently verified by potential buyers. We assume no liability for errors or omissions.



EXCLUSIVELY PRESENTED BY
A DIVISION OF PEARSON COMPANIES



www.pearsonrealty.com

FRESNO OFFICE

7480 N Palm Avenue, Suite 101
Fresno, CA 93711
t 559-432-6200

VISALIA OFFICE

3447 S. Demaree Street
Visalia, CA 93277
t 559-732-7300

BAKERSFIELD OFFICE

4900 California Ave, Suite 210B
Bakersfield, CA 93309
t 661-334-2777

CA DRE #00020875

