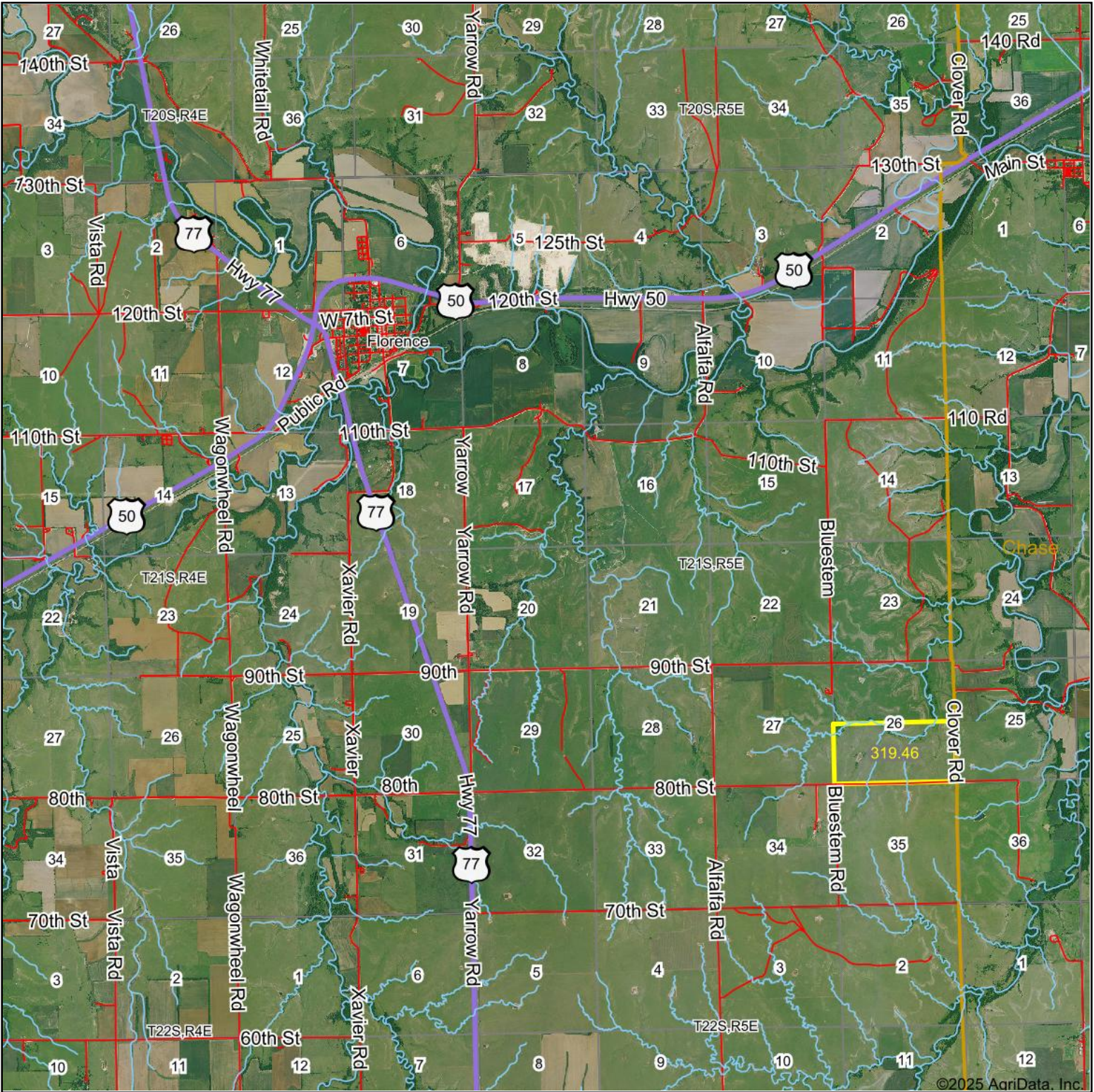


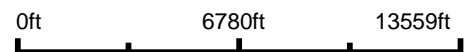
# Aerial Map



©2025 AgriData, Inc.



Boundary Center: 38° 11' 27.3, -96° 50' 59.81



26-21S-5E  
Marion County  
Kansas



Maps Provided By:



© AgriData, Inc. 2023 www.AgriDataInc.com

2/15/2025

Field borders provided by Farm Service Agency as of 5/21/2008.

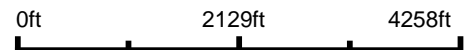
# Aerial Map



©2025 AgriData, Inc.



Boundary Center: 38° 11' 27.79, -96° 51' 32.95



**27-21S-5E**  
**Marion County**  
**Kansas**

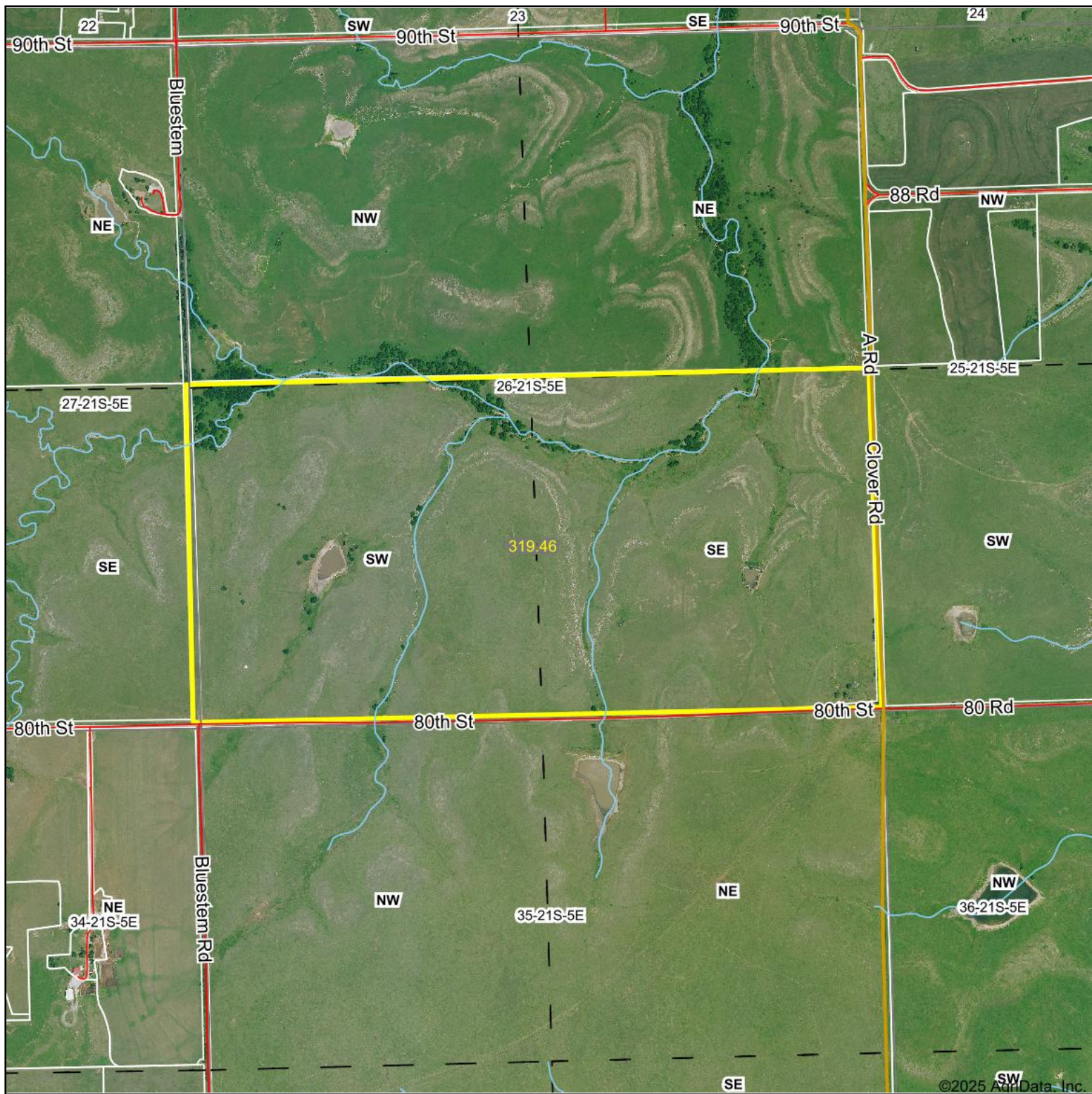


Maps Provided By:  
 **surety**  
CUSTOMIZED ONLINE MAPPING  
© AgriData, Inc. 2023 www.AgriDataInc.com

2/15/2025

Field borders provided by Farm Service Agency as of 5/21/2008.

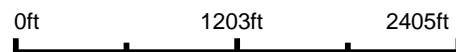
# Aerial Map



©2025 AgriData, Inc.



Boundary Center: 38° 11' 27.3, -96° 50' 59.81



**26-21S-5E**  
**Marion County**  
**Kansas**

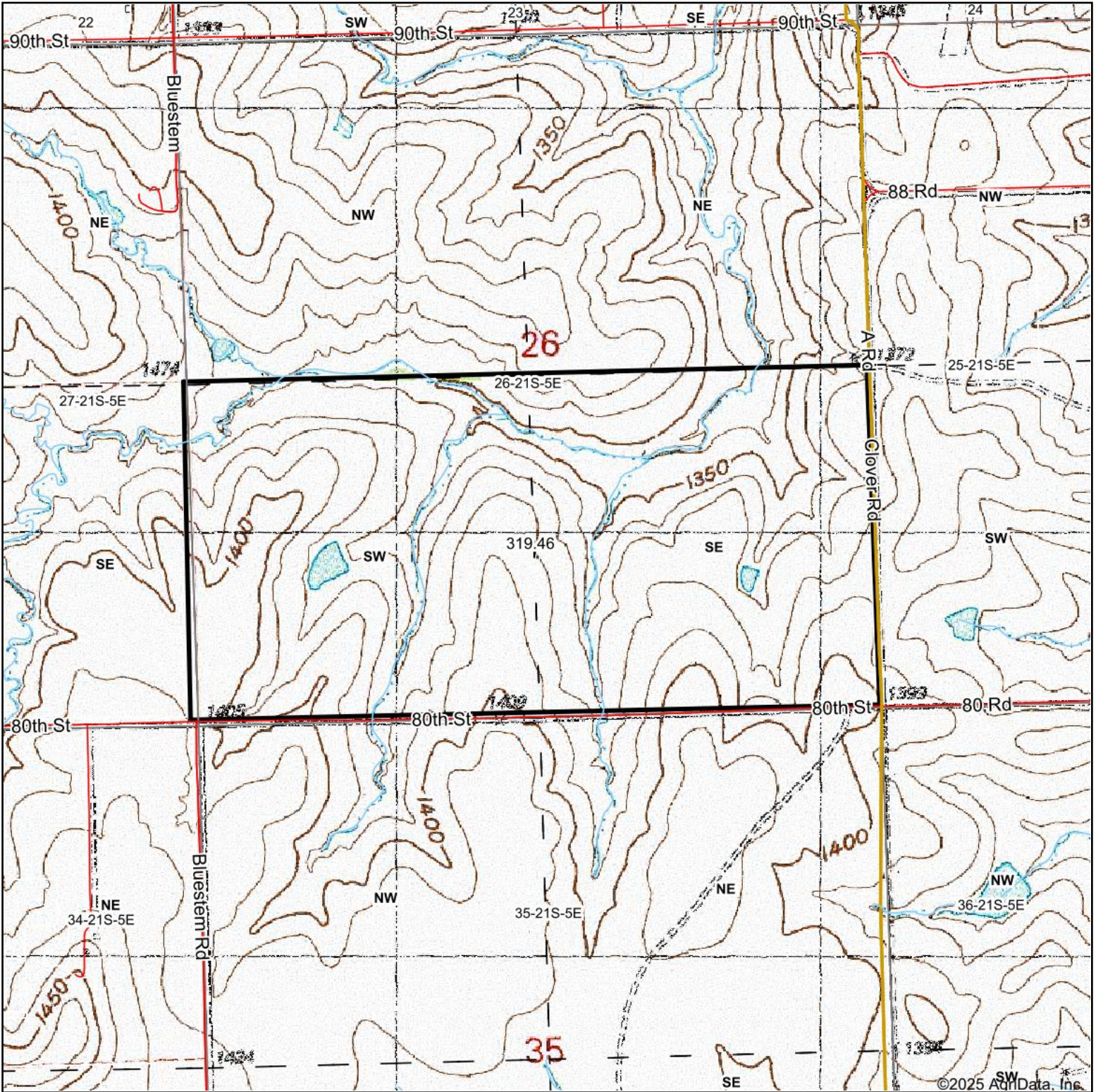


Maps Provided By:  
  
CUSTOMIZED ONLINE MAPPING  
© AgriData, Inc. 2023      www.AgriDataInc.com

2/15/2025

Field borders provided by Farm Service Agency as of 5/21/2008.

# Topography Map



©2025 AgriData, Inc.



Map Center: 38° 11' 26.95, -96° 50' 58.34



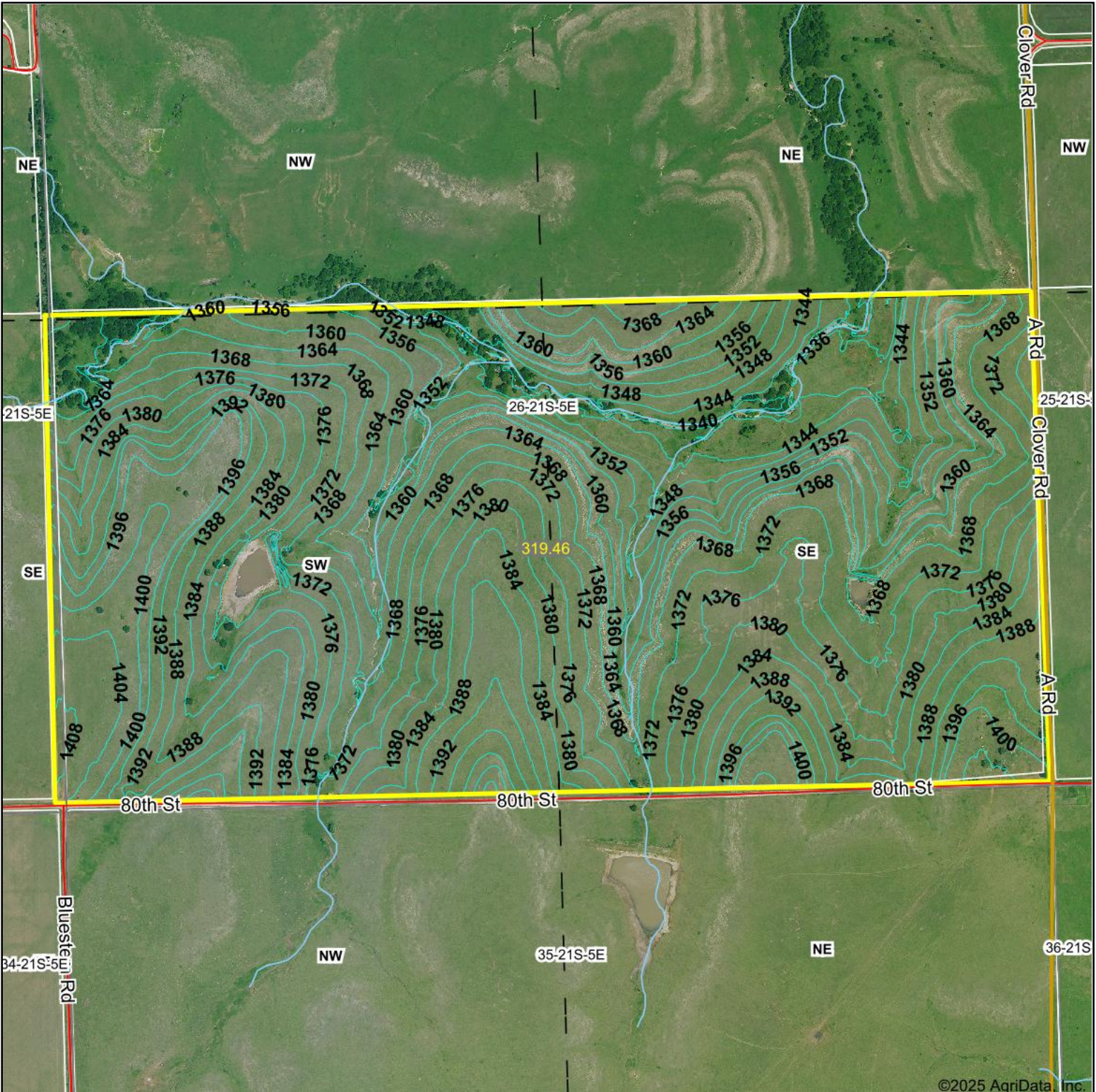
**26-21S-5E**  
**Marion County**  
**Kansas**



2/15/2025

Maps Provided By:  
  
CUSTOMIZED ONLINE MAPPING  
© AgriData, Inc. 2023 www.AgriDataInc.com

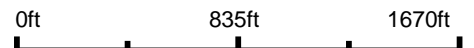
# Topography Contours



©2025 AgriData, Inc.



Source: USGS 3 meter dem  
 Interval(ft): 4.0  
 Min: 1,327.8  
 Max: 1,408.9  
 Range: 81.1  
 Average: 1,372.9  
 Standard Deviation: 16.83 ft



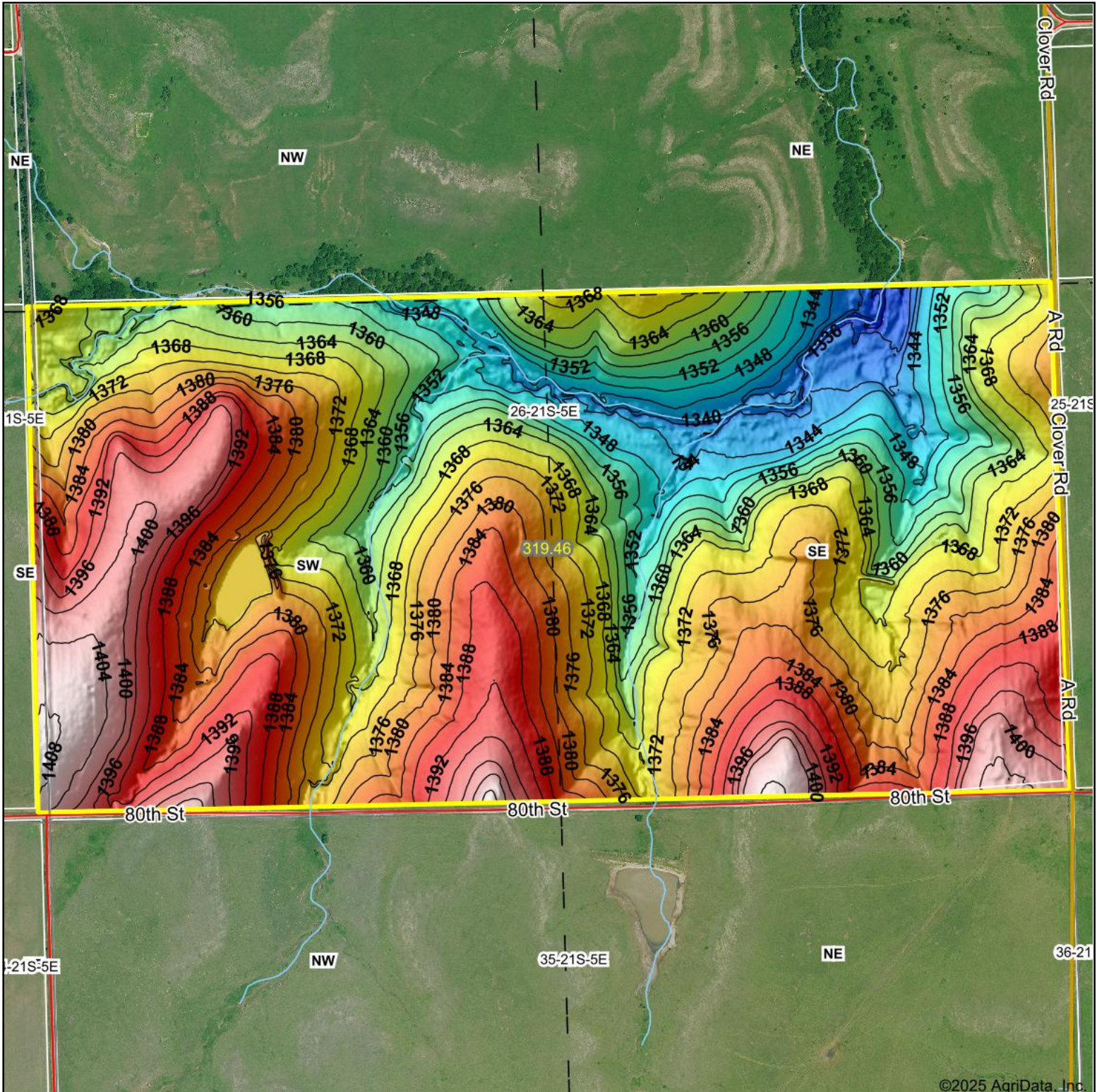
2/15/2025

26-21S-5E  
 Marion County  
 Kansas

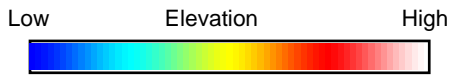
Boundary Center: 38° 11' 27.3, -96° 50' 59.81

Field borders provided by Farm Service Agency as of 5/21/2008.

# Topography Hillshade



©2025 AgriData, Inc.



Source: USGS 3 meter dem  
 Interval(ft): 4  
 Min: 1,327.8  
 Max: 1,408.9  
 Range: 81.1  
 Average: 1,372.9  
 Standard Deviation: 16.83 ft

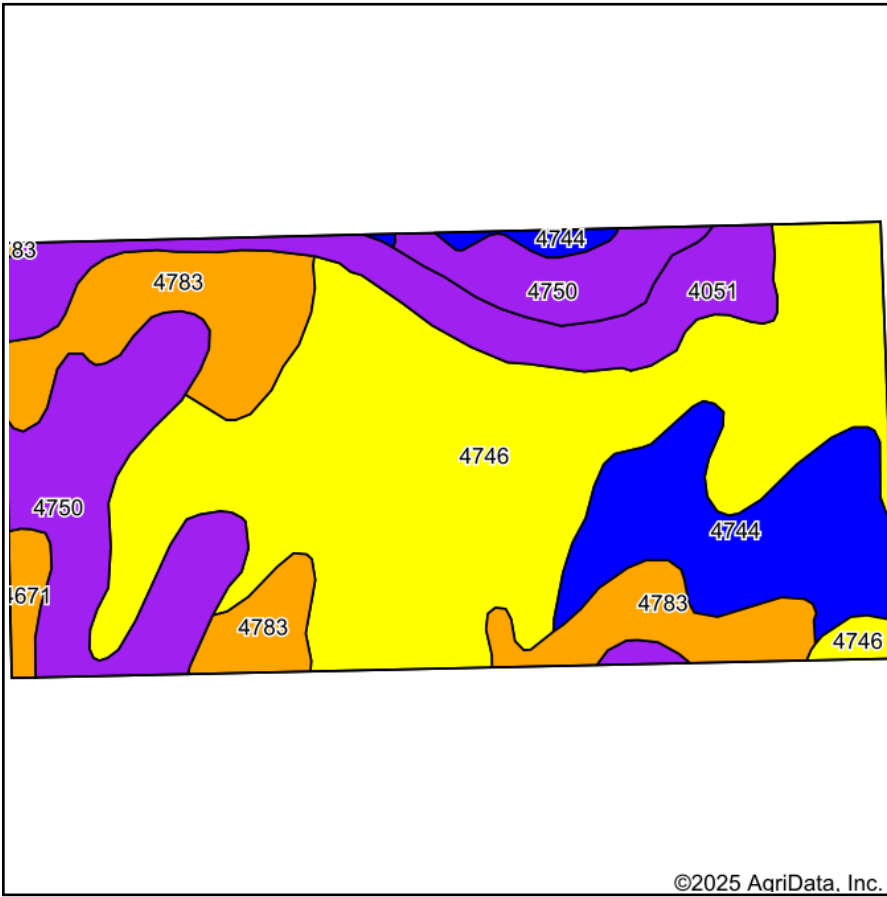


**26-21S-5E**  
**Marion County**  
**Kansas**

Boundary Center: 38° 11' 27.3, -96° 50' 59.81

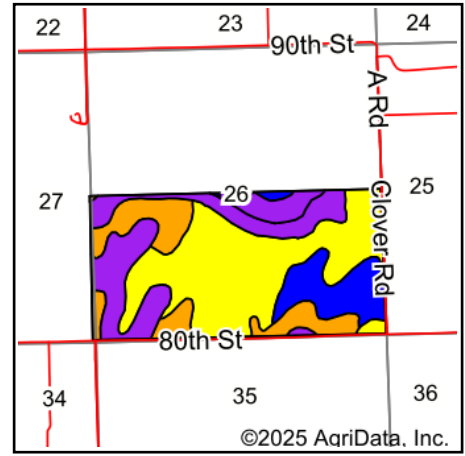
© AgriData, Inc. 2023 www.AgriDataInc.com  
 Field borders provided by Farm Service Agency as of 5/21/2008.

# Soils Map



Soils data provided by USDA and NRCS.

©2025 AgriData, Inc.



©2025 AgriData, Inc.

State: **Kansas**  
 County: **Marion**  
 Location: **26-21S-5E**  
 Township: **Doyle**  
 Acres: **319.46**  
 Date: **2/15/2025**



Maps Provided By:



© AgriData, Inc. 2023

www.AgriDataInc.com



Area Symbol: KS115, Soil Area Version: 22

Code	Soil Description	Acres	Percent of field	Non-Irr Class Legend	Non-Irr Class *c	Irr Class *c	*n NCCPI Soybeans
4746	Labette-Sogn silty clay loam, 0 to 8 percent slopes	142.89	44.7%		IVe	IIIe	33
4750	Sogn silty clay loam, 0 to 10 percent slopes	52.93	16.6%		VIIs		17
4783	Tully silty clay loam, 3 to 7 percent slopes	48.81	15.3%		IIIe	IIIe	60
4744	Labette-Dwight complex, 0 to 3 percent slopes	40.15	12.6%		Ile	Ile	43
4051	Ivan silt loam, channeled	30.71	9.6%		Vw		52
4671	Irwin silty clay loam, 1 to 3 percent slopes	3.97	1.2%		IIIs	IIIs	55
<b>Weighted Average</b>					<b>4.01</b>	<b>*-</b>	<b>*n 37.8</b>

\*n: The aggregation method is "Weighted Average using all components"

\*c: Using Capabilities Class Dominant Condition Aggregation Method

\*- Irr Class weighted average cannot be calculated on the current soils data due to missing data.