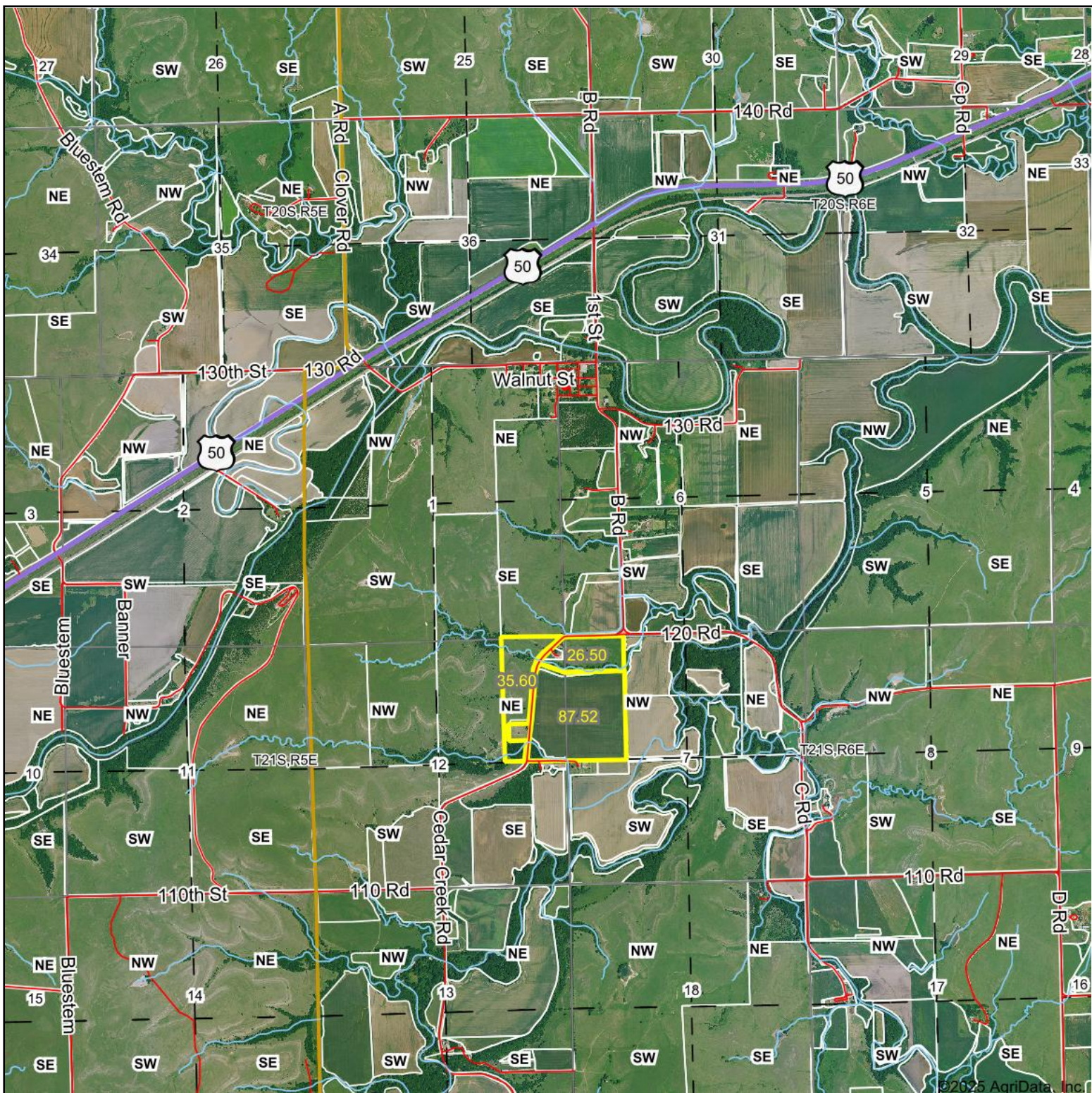
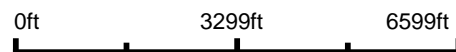


Aerial Map



Boundary Center: 38° 14' 30.33, -96° 49' 20.43



12-21S-5E
Chase County
Kansas

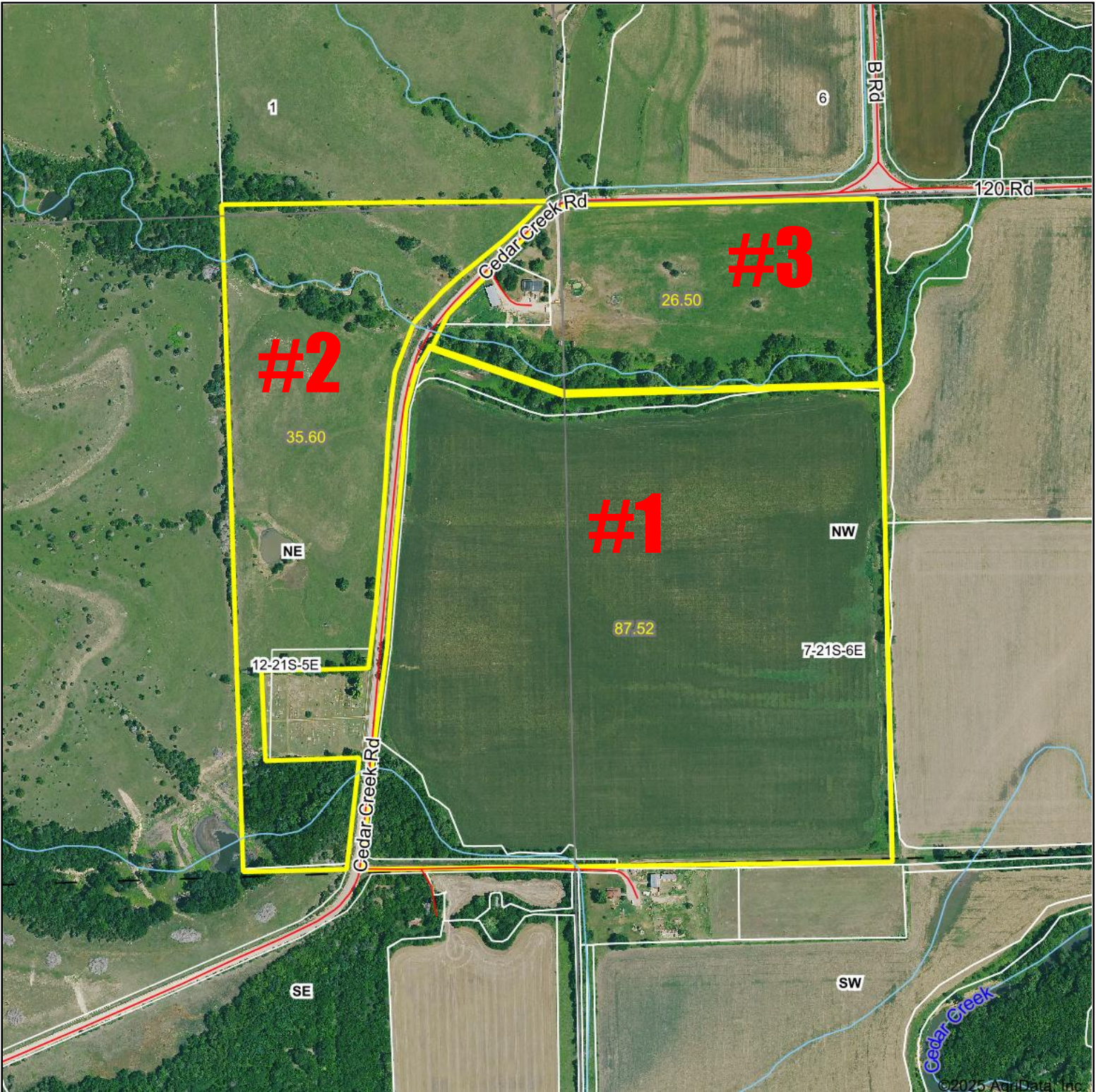


Maps Provided By:
 **surety**
CUSTOMIZED ONLINE MAPPING
© AgriData, Inc. 2023 www.AgriDataInc.com

2/17/2025

Field borders provided by Farm Service Agency as of 5/21/2008.

Aerial Map



©2025 AgriData, Inc.



Boundary Center: 38° 14' 30.33, -96° 49' 20.43



12-21S-5E
Chase County
Kansas



Maps Provided By:
 **surety**
CUSTOMIZED ONLINE MAPPING
© AgriData, Inc. 2023 www.AgriDataInc.com

2/17/2025

Field borders provided by Farm Service Agency as of 5/21/2008.

Aerial Map



©2025 AgriData, Inc.



Boundary Center: 38° 14' 27.46, -96° 49' 17.35



7-21S-6E
Chase County
Kansas

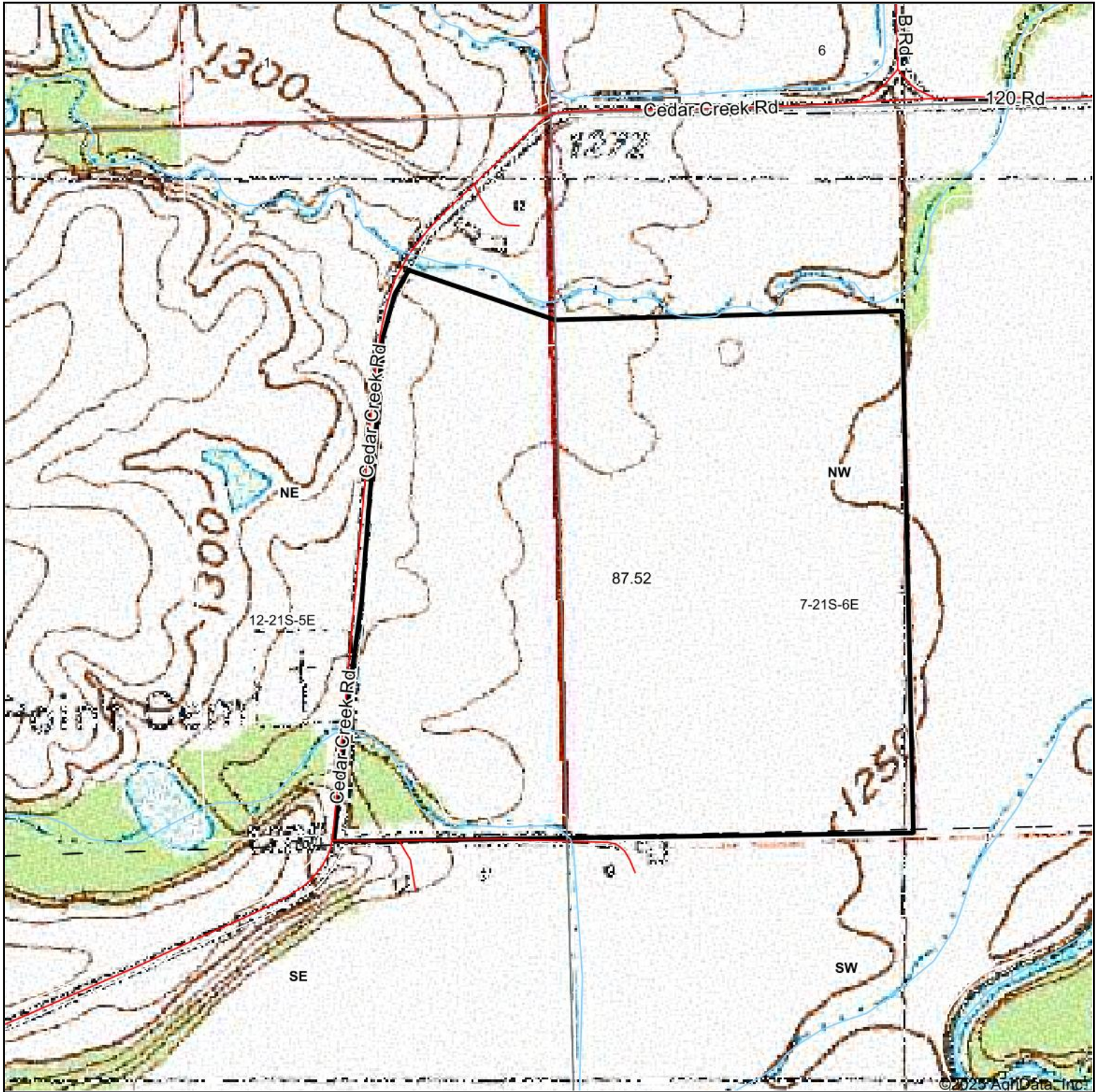


Maps Provided By:
 **surety**
CUSTOMIZED ONLINE MAPPING
© AgriData, Inc. 2023 www.AgriDataInc.com

2/17/2025

Field borders provided by Farm Service Agency as of 5/21/2008.

Topography Map



© 2025 AgriData, Inc.

Map Center: 38° 14' 27.72, -96° 49' 20.5



7-21S-6E
Chase County
Kansas



2/17/2025



Maps Provided By:



© AgriData, Inc. 2023

www.AgriDataInc.com

Field borders provided by Farm Service Agency as of 5/21/2008.

Topography Contours



©2025 AgriData, Inc.



Field borders provided by Farm Service Agency as of 5/21/2008.

Source: USGS 1 meter dem
 Interval(ft): 3.0
 Min: 1,246.9
 Max: 1,285.2
 Range: 38.3
 Average: 1,257.3
 Standard Deviation: 6.17 ft

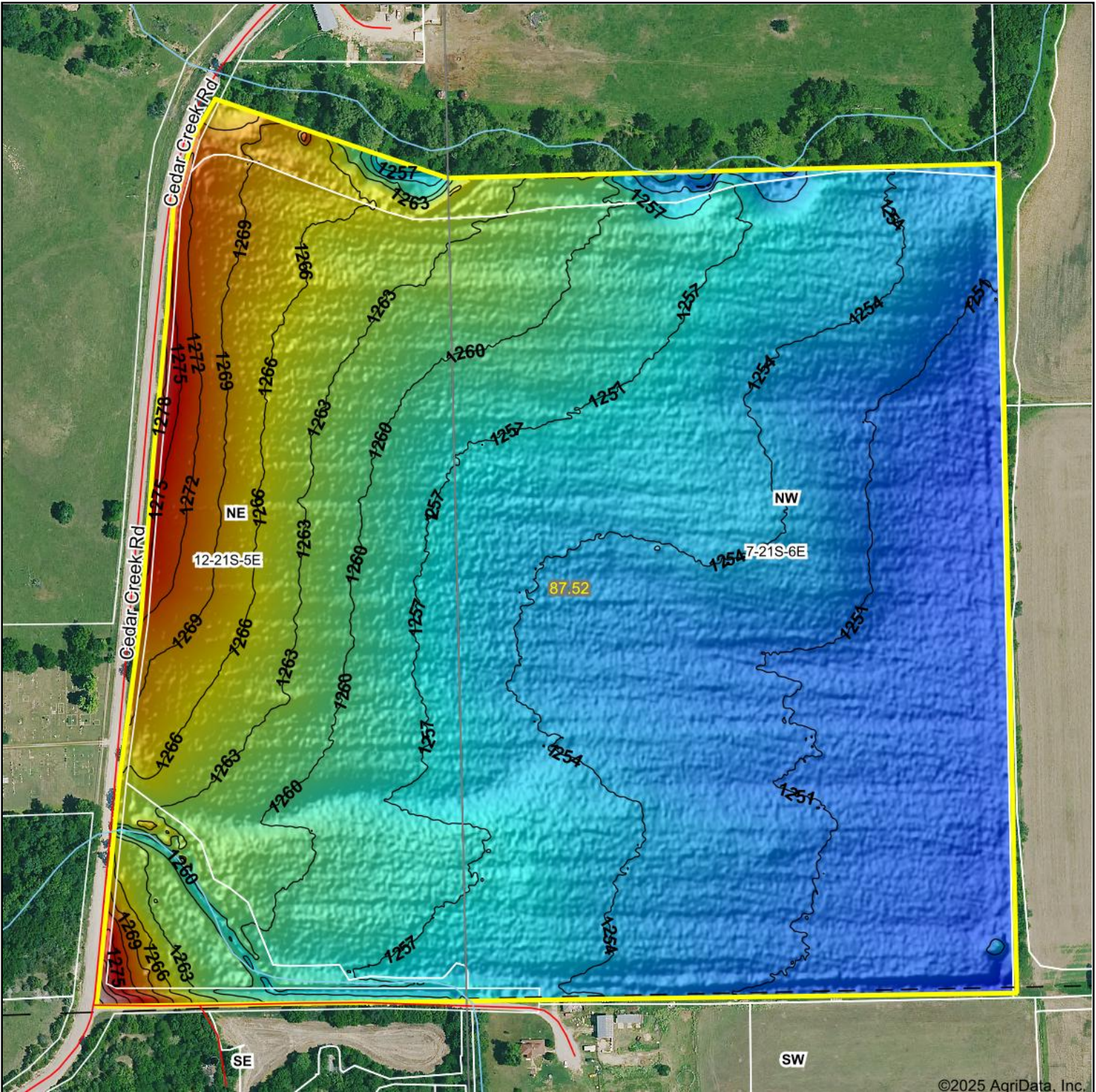


2/17/2025

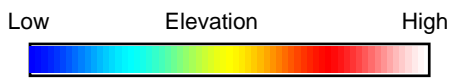
7-21S-6E
Chase County
Kansas

Boundary Center: 38° 14' 27.46, -96° 49' 17.35

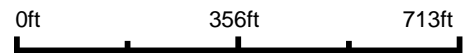
Topography Hillshade



©2025 AgriData, Inc.



Source: USGS 1 meter dem



Interval(ft): 3

Min: 1,246.9

Max: 1,285.2

Range: 38.3

Average: 1,257.3

Standard Deviation: 6.17 ft



2/17/2025

7-21S-6E
Chase County
Kansas

Boundary Center: 38° 14' 27.46, -96° 49' 17.35



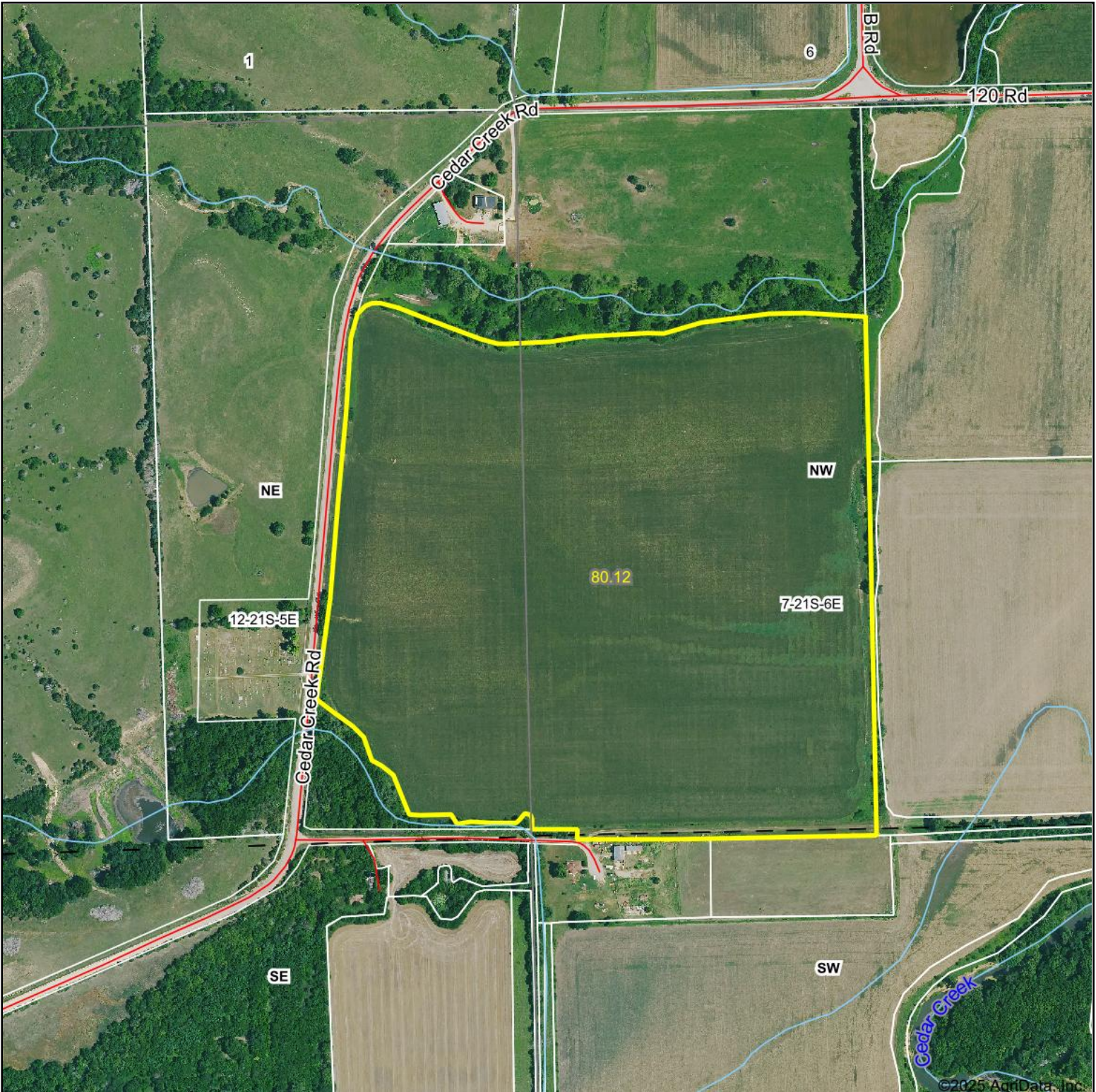
Maps Provided By:



© AgriData, Inc. 2023 www.AgriDataInc.com

Field borders provided by Farm Service Agency as of 5/21/2008.

Aerial Map



©2025 AgriData, Inc.



Boundary Center: 38° 14' 26.78, -96° 49' 16.89



7-21S-6E
Chase County
Kansas

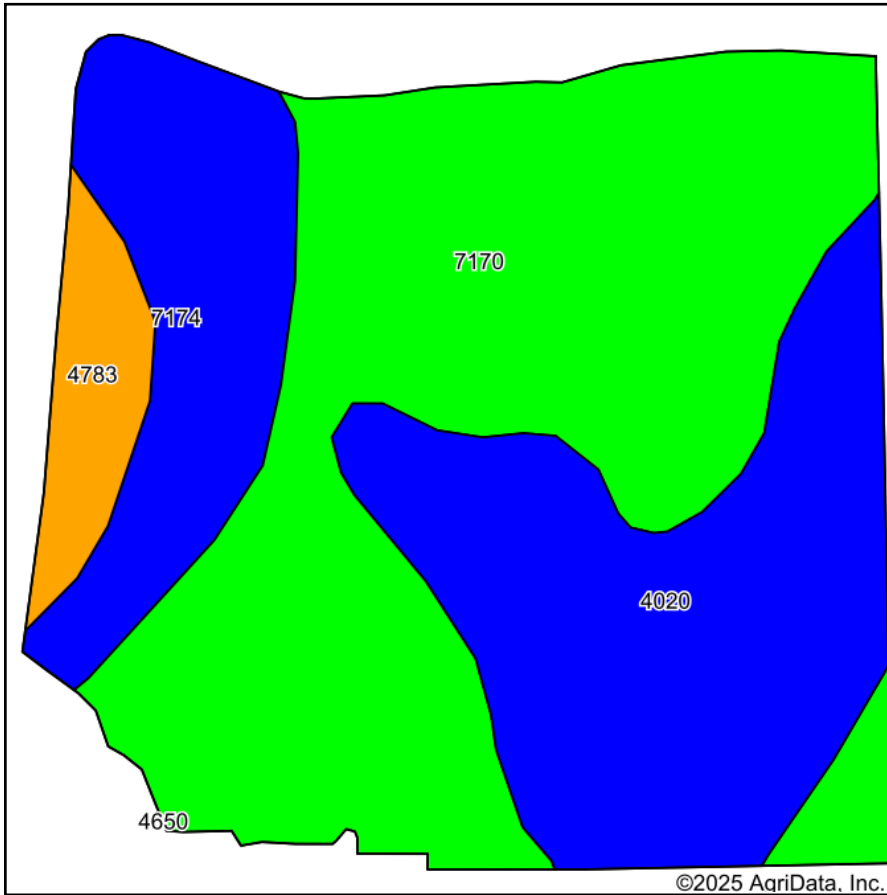


Maps Provided By:
 **surety**
CUSTOMIZED ONLINE MAPPING
© AgriData, Inc. 2023 www.AgriDataInc.com

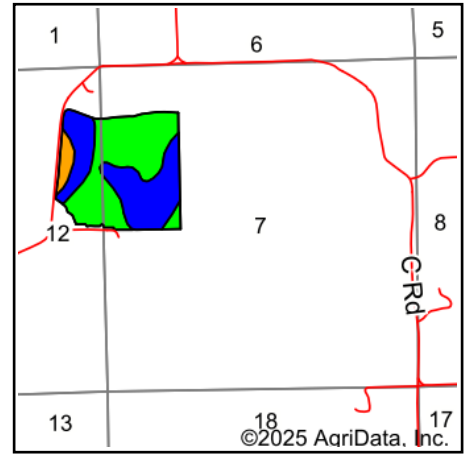
2/17/2025

Field borders provided by Farm Service Agency as of 5/21/2008.

Soils Map



Soils data provided by USDA and NRCS.



State: **Kansas**
 County: **Chase**
 Location: **7-21S-6E**
 Township: **Cottonwood**
 Acres: **80.12**
 Date: **2/17/2025**



Maps Provided By:



© AgriData, Inc. 2023

www.AgriDataInc.com



Area Symbol: KS017, Soil Area Version: 20

Code	Soil Description	Acres	Percent of field	Non-Irr Class Legend	Non-Irr Class *c	Irr Class *c	*n NCCPI Soybeans
7170	Reading silt loam, rarely flooded	41.59	51.9%		lw	lw	76
4020	Chase silty clay loam, occasionally flooded	23.21	29.0%		llw	llw	66
7174	Reading silt loam, 1 to 3 percent slopes	11.48	14.3%		lle	lle	76
4783	Tully silty clay loam, 3 to 7 percent slopes	3.84	4.8%		llle	llle	60
Weighted Average					1.53	1.53	*n 72.3

*n: The aggregation method is "Weighted Average using all components"

*c: Using Capabilities Class Dominant Condition Aggregation Method

Soils data provided by USDA and NRCS.