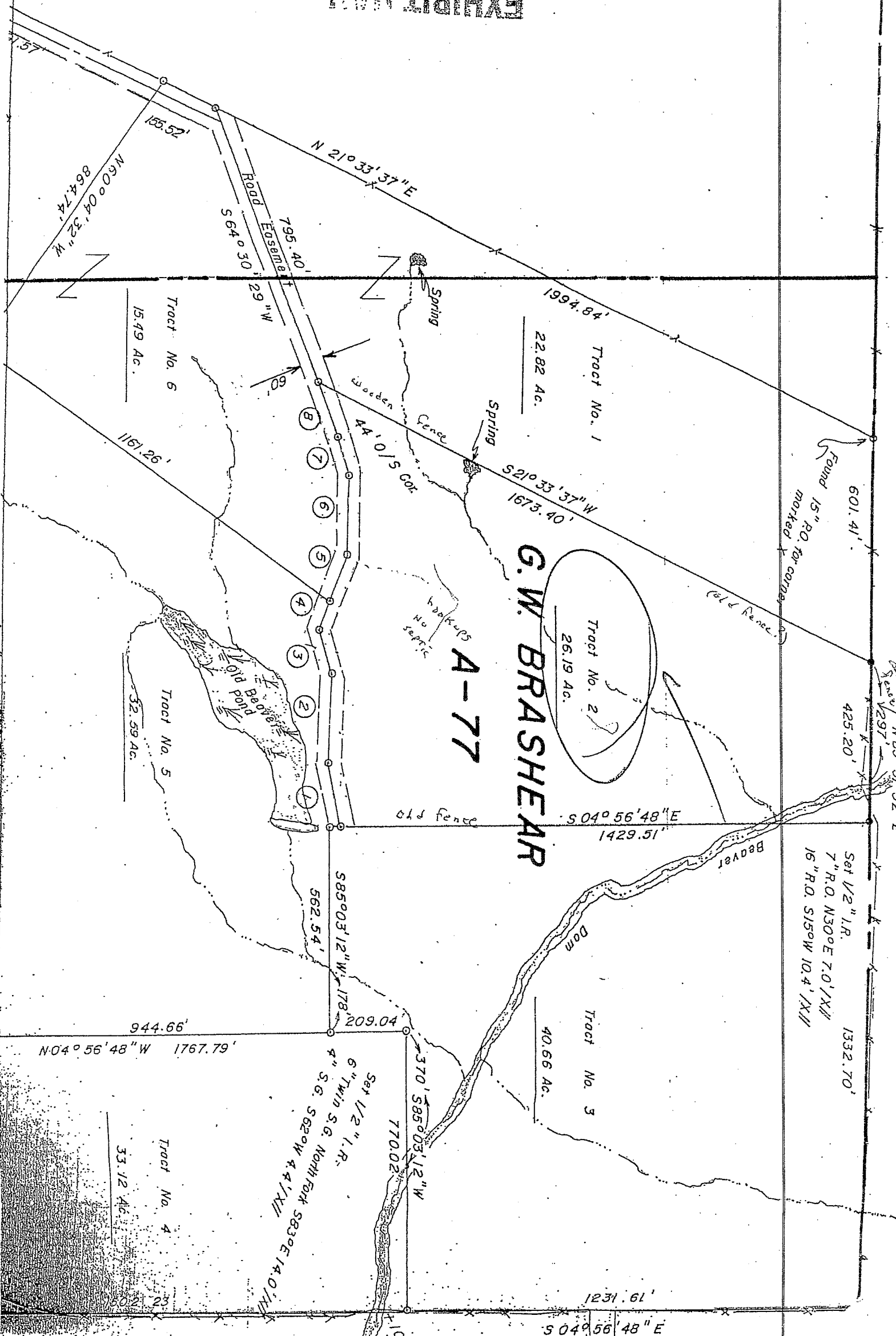


PER

EXHIBIT



G. W. BRASHEAR

A-77

Tract No. 2
26.19 Ac.

Tract No. 6
15.49 Ac.

Tract No. 5
32.59 Ac.

Tract No. 4
33.12 Ac.

Tract No. 1
22.82 Ac.

Tract No. 3
40.66 Ac.

601.41'

425.20'

1332.70'

Old Rencel
N 85° 51' 52" E
1297'

Set 1/2" I.R.
7" R.O. N30°E 7.0' / XII
16" R.O. S15°W 10.4' / XII

Set 1/2" I.R.
6" Twin S.G. North Fork S83°E 14.0' / XII
4" S.G. S62°W 4.4' / XII

1231.61'

S 04° 56' 48" E