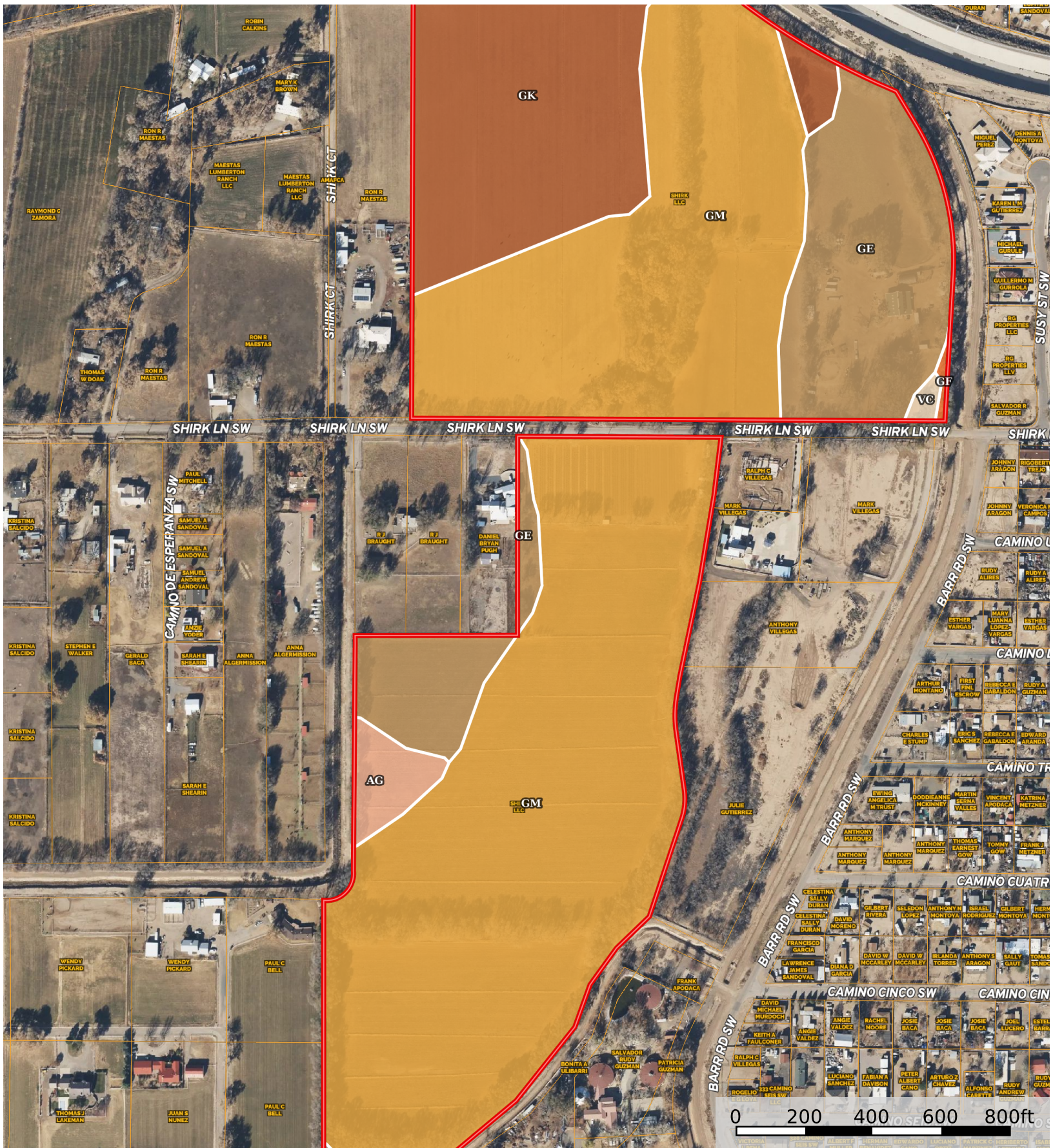


# Shirk Lane Farm

Bernalillo County, New Mexico, 43 AC +/-



Boundary

 All Polygons 79.67 ac

SOIL CODE	SOIL DESCRIPTION	ACRES	%	CPI	NCCPI	CAP
Gm	Glendale clay loam, 0 to 1 percent slopes MLRA 42.1	51.93	65.18	0	12	7c
Gk	Glendale loam MLRA 42	13.29	16.68	0	14	7c
Ge	Gila clay loam MLRA 42	12.6	15.82	0	14	7c
Ag	Agua silty clay loam MLRA 42	1.33	1.67	0	12	7s
Vc	Vinton clay loam MLRA 42	0.21	0.26	0	13	7s
Gb	Gila loam, 0 to 1 percent slopes mlra 42-1	0.18	0.23	0	10	7c
GF	Gila complex, moderately alkali	0.13	0.16	0	4	7s
TOTALS		79.67(*)	100%	-	12.63	7.0

(\*) Total acres may differ in the second decimal compared to the sum of each acreage soil. This is due to a round error because we only show the acres of each soil with two decimal.

 Boundary 42.94 ac

SOIL CODE	SOIL DESCRIPTION	ACRES	%	CPI	NCCPI	CAP
Gm	Glendale clay loam, 0 to 1 percent slopes MLRA 42.1	20.11	46.82	0	12	7c
Gk	Glendale loam MLRA 42	13.29	30.94	0	14	7c
Ge	Gila clay loam MLRA 42	9.18	21.37	0	14	7c
Vc	Vinton clay loam MLRA 42	0.21	0.49	0	13	7s
GF	Gila complex, moderately alkali	0.13	0.3	0	4	7s
Gb	Gila loam, 0 to 1 percent slopes mlra 42-1	0.02	0.05	0	10	7c
TOTALS		42.94(*)	100%	-	13.02	7.0

(\*) Total acres may differ in the second decimal compared to the sum of each acreage soil. This is due to a round error because we only show the acres of each soil with two decimal.

 Boundary 36.73 ac

SOIL CODE	SOIL DESCRIPTION	ACRES	%	CPI	NCCPI	CAP
Gm	Glendale clay loam, 0 to 1 percent slopes MLRA 42.1	31.82	86.66	0	12	7c
Ge	Gila clay loam MLRA 42	3.42	9.31	0	14	7c
Ag	Agua silty clay loam MLRA 42	1.33	3.62	0	12	7s
Gb	Gila loam, 0 to 1 percent slopes mlra 42-1	0.16	0.44	0	10	7c
TOTALS		36.73(*)	100%	-	12.18	7.0









(\*) Total acres may differ in the second decimal compared to the sum of each acreage soil. This is due to a round error because we only show the acres of each soil with two decimal.

## Capability Legend

Increased Limitations and Hazards

Decreased Adaptability and Freedom of Choice Users

Land, Capability

								
	1	2	3	4	5	6	7	8
'Wild Life'	•	•	•	•	•	•	•	•
Forestry	•	•	•	•	•	•	•	
Limited	•	•	•	•	•	•	•	
Moderate	•	•	•	•	•	•		
Intense	•	•	•	•	•			
Limited	•	•	•	•				
Moderate	•	•	•					
Intense	•	•						
Very Intense	•							

### Grazing Cultivation

(c) climatic limitations (e) susceptibility to erosion

(s) soil limitations within the rooting zone (w) excess of water