

**19± ACRES**  
**JASPER COUNTY, MS**  
**\$90,000**



**SMALLTOWN**  
HUNTING PROPERTIES  
& REAL ESTATE<sup>SM</sup>

OFFICE (769) 760-0005

# THE JASPER 19

## PROPERTY PROFILE

### LOCATION:

- Hwy 15N  
Louin, MS 39338
- Jasper County
- 3.5± Miles N of Bay Springs

### COORDINATES:

- 32.024596, -89.278956

### PROPERTY USE:

- Hunting
- Family Getaway
- Outdoor Lifestyle
- Residential

### PROPERTY INFORMATION:

- 19± Acres
- State Hwy Frontage
- Rolling Terrain
- Mature Hardwood and Pine
- Pond
- Utilities
- Deer & Duck

### TAX INFORMATION:

2024 - \$53.95

- Parcel 0083-09-000-023.01



**SMALLTOWN**  
HUNTING PROPERTIES  
& REAL ESTATE<sup>SM</sup>

### DENNIS WEST

*EAST MISSISSIPPI MANAGING BROKER  
ALABAMA QUALIFYING BROKER  
LOUISIANA ASSOCIATE BROKER*

**C: 601-248-4396 | O: 769-760-0005**

**dennis@smalltownproperties.com**

**2121 5th St., Ste 206 - Meridian, MS 39301**

**smalltownproperties.com**

# WELCOME TO THE JASPER 19

IF YOU ARE IN THE MARKET FOR A PROPERTY OFFERING HUNTING, RECREATION, OR A COUNTRY GETAWAY, LOOK NO FURTHER! This 19± acre Jasper County tract is situated just over three miles north of Bay Springs with frontage on Highway 15. Adding to its natural beauty, other features include rolling terrain, a mix of mature hardwoods, and a small stream meandering through the landscape. A pond provides a scenic touch and a potential water source for local wildlife. The property is split by a railroad, which creates a unique layout for exploration and outdoor enjoyment. Whether you're looking for a hunting retreat, a recreational escape, or a potential home or cabin site, this property has much to offer! For added convenience, utilities are nearby.

**Call Dennis West today to discuss the options available on this Jasper County gem!**



**SMALLTOWN**  
HUNTING PROPERTIES  
& REAL ESTATE<sup>SM</sup>

**DENNIS WEST**

*EAST MISSISSIPPI MANAGING BROKER*

*ALABAMA QUALIFYING BROKER*

*LOUISIANA ASSOCIATE BROKER*

**C: 601-248-4396 | O: 769-760-0005**

**dennis@smalltownproperties.com**

**2121 5th St., Ste 206 - Meridian, MS 39301**

**smalltownproperties.com**

19± ACRES

JASPER COUNTY, MISSISSIPPI



**SMALLTOWN**  
HUNTING PROPERTIES  
& REAL ESTATE<sup>SM</sup>

**DENNIS WEST**

*EAST MISSISSIPPI MANAGING BROKER*

*ALABAMA QUALIFYING BROKER*

*LOUISIANA ASSOCIATE BROKER*

**C: 601-248-4396 | O: 769-760-0005**

**dennis@smalltownproperties.com**

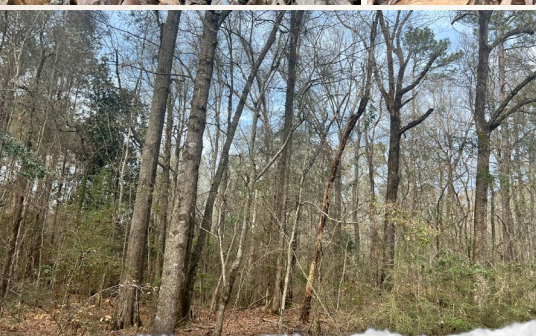
**2121 5th St., Ste 206 - Meridian, MS 39301**

**smalltownproperties.com**

*Information is believed to be accurate but not guaranteed.*

19± ACRES

JASPER COUNTY, MISSISSIPPI



**SMALLTOWN**  
HUNTING PROPERTIES  
& REAL ESTATE<sup>SM</sup>

**DENNIS WEST**

*EAST MISSISSIPPI MANAGING BROKER*

*ALABAMA QUALIFYING BROKER*

*LOUISIANA ASSOCIATE BROKER*

**C: 601-248-4396 | O: 769-760-0005**

**dennis@smalltownproperties.com**

**2121 5th St., Ste 206 - Meridian, MS 39301**

**smalltownproperties.com**

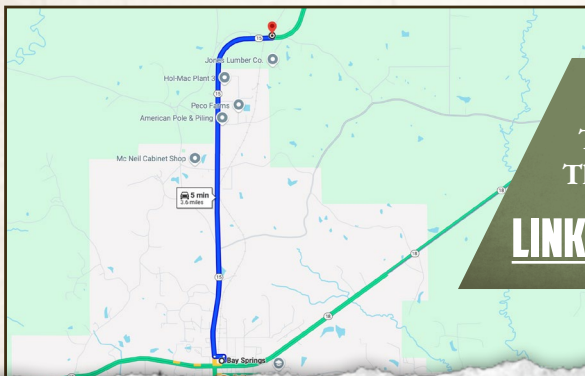
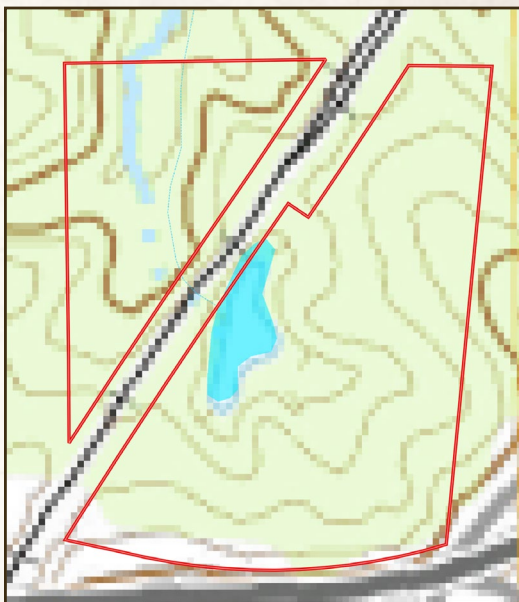
*Information is believed to be accurate but not guaranteed.*

19± ACRES

JASPER COUNTY, MISSISSIPPI

land id. LINK

TOPOGRAPHY MAP



Directions From Bay Spring, MS:  
Travel 3.5 miles north on Hwy 15.  
The property will be on the left.

[LINK TO GOOGLE MAP DIRECTIONS](#)



**SMALLTOWN**  
HUNTING PROPERTIES  
& REAL ESTATE<sup>SM</sup>

**DENNIS WEST**

*EAST MISSISSIPPI MANAGING BROKER*

*ALABAMA QUALIFYING BROKER*

*LOUISIANA ASSOCIATE BROKER*

C: 601-248-4396 | O: 769-760-0005

[dennis@smalltownproperties.com](mailto:dennis@smalltownproperties.com)

2121 5th St., Ste 206 - Meridian, MS 39301

[smalltownproperties.com](http://smalltownproperties.com)

*Information is believed to be accurate but not guaranteed.*