

16.2± ACRES | POLK ROAD 669
POLK COUNTY, AR
\$142,500



SMALLTOWN
HUNTING PROPERTIES
& REAL ESTATESM

OFFICE (479) 588-1034

16.2± ACRES | POLK ROAD 669

PROPERTY PROFILE

LOCATION:

- Polk Road 669
Mena, AR 71953
- Polk County
- Adjacent to Ouachita
National Forest
- 4.6± Miles SW of
Irons Fork Lake
- 10± Miles NE of Mena
- 15± Miles SW of the Fourche
Mountain ATV Trails
- 250± Miles NE of Dallas, TX

PROPERTY INFORMATION:

- 16.2± Acres
- Access by Deeded Easement
- Ouachita National Forest
Borders to the North
- Chances Creek Borders
to the West
- Concrete Barn
- Pond
- Mature Timber

COORDINATES:

- 34.64147, -94.14887

TAX INFORMATION:

- Parcel # 0000-03306-0025: \$29

PROPERTY USE:

- Hunting
- Recreational
- Potential Home Site
- Investment



SMALLTOWN
HUNTING PROPERTIES
& REAL ESTATESM

LUKE ALSTON, ALC

EXECUTIVE BROKER

C: 479-234-1376

O: 479-588-1034

lukealston@smalltownproperties.com

5607 Highway 71 South - Cove, AR 71937

smalltownproperties.com

Information is believed to be accurate but not guaranteed.

16.2± ACRES | POLK ROAD 669

INTRODUCING A 16.2± ACRE OUTDOOR HAVEN IN POLK COUNTY, ARKANSAS! Situated on Polk Road 669 in Mena, the northern boundary of the property is the Ouachita National Forest, which makes it “play” much larger than it actually is. The forest offers 600± acres with foot travel only. Chances Creek runs along the western border of the property for year-round enjoyment, and a pond also provides a water source for livestock and local wildlife. The Polk County property features one of the most unique two-story barns you will ever find. Electricity is easily accessible. An all-weather deeded access road allows for easy entry to this great place with unlimited potential for adventure.

Call Luke Alston today to discuss the possibilities here!



SMALLTOWN
HUNTING PROPERTIES
& REAL ESTATESM

LUKE ALSTON, ALC

EXECUTIVE BROKER

C: 479-234-1376

O: 479-588-1034

lukealston@smalltownproperties.com

5607 Highway 71 South - Cove, AR 71937

smalltownproperties.com

Information is believed to be accurate but not guaranteed.

16.2± ACRES | POLK ROAD 669 | POLK COUNTY, ARKANSAS



SMALLTOWN
HUNTING PROPERTIES
& REAL ESTATESM

LUKE ALSTON, ALC

EXECUTIVE BROKER

C: 479-234-1376

O: 479-588-1034

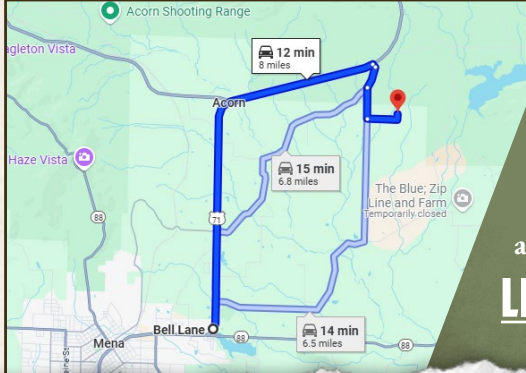
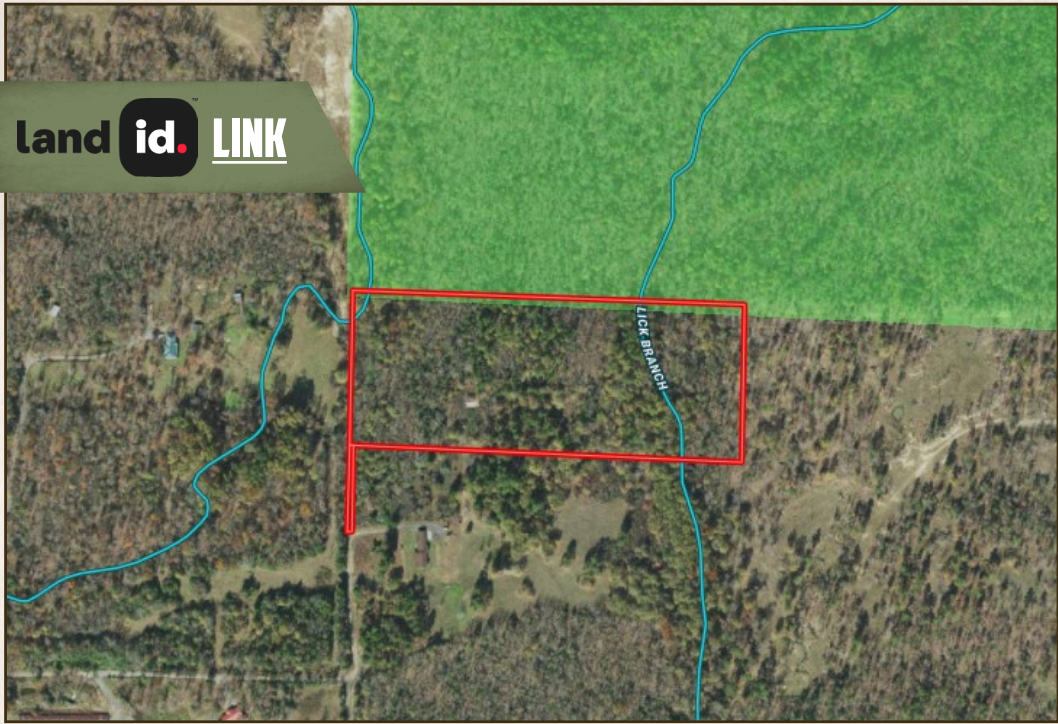
lukealston@smalltownproperties.com

5607 Highway 71 South - Cove, AR 71937

smalltownproperties.com

Information is believed to be accurate but not guaranteed.

land id. LINK



Directions From Mena, AR: Travel 6.4 miles on Hwy 71 North. Turn right on Polk Road 76 and proceed 0.4 miles. Turn left on Polk Road 75 and continue 0.5 miles. Turn left on Polk Road 669 and in 0.6 miles you will arrive at the destination.

LINK TO GOOGLE MAP DIRECTIONS



SMALLTOWN
HUNTING PROPERTIES
& REAL ESTATESM

LUKE ALSTON, ALC

EXECUTIVE BROKER

C: 479-234-1376

O: 479-588-1034

lukealston@smalltownproperties.com

5607 Highway 71 South - Cove, AR 71937

smalltownproperties.com

Information is believed to be accurate but not guaranteed.