



## 127 OAK STREET MCCLELLANVILLE

The Louis Whilden House (circa 1862)—a beautifully maintained, carefully restored French Huguenot cottage—is one of the oldest residential structures in historic McClellanville that offers both modern convenience and the quintessential Lowcountry experience. Situated on a sprawling one-acre lot, the National Historic Register home overlooks century-old live oaks and Jeremy Creek. The short deepwater dock recently rebuilt with power and water connections is just minutes away from the Intracoastal Waterway providing easy access to Cape Romain National Wildlife Refuge and some of the East Coast's best inshore fishing, shrimping and oystering.

### PROPERTY

.89 Acres, 3-Bedroom 1,728 Sq Ft Home  
150' Deepwater Dock, Covered Pier Head  
Floating Dock plus Drive-on for a 21' Boat  
Two Outbuildings with Power and Water  
Electric Security Gate and Perimeter Fencing

### LOCATION

The Village of McClellanville - Charleston County  
Walking Distance to TW Grahams & Carolina Seafood  
45 Minutes from Mt Pleasant / 1 Hr From Charleston  
AE-12 Flood Zone  
Tax Map: 764-14-00-106

**AVAILABLE FOR \$2,300,000**







127 OAK STREET  
MCCLELLANVILLE







## LOUIS AUGUSTUS WHILDEN HOUSE, CIRCA 1862

*Metal Roof with Steep Gable in the French Huguenot Style, Wood Siding, 350 sq ft Screened-in Back Porch Overlooking Jeremy Creek  
Original Cypress Hardwood Floors, Antique Glass Windows, Chair Rail Paneling, Smooth Ceilings*

### KITCHEN

*Carrera Marble Countertops, Full-Size Freezer and Refrigerator, 6-Burner Viking Gas Stove with Griddle, Dual-Basin Farmhouse Sink*

### MASTER

*First Floor, Fireplace, Walk-in Closet Doubles as Home Office*

### LIVING ROOM

*Brick Fireplace with Gas Logs, Built-in Antique Cabinet with Marble Inlay, Beadboard Ceilings*

### UPSTAIRS

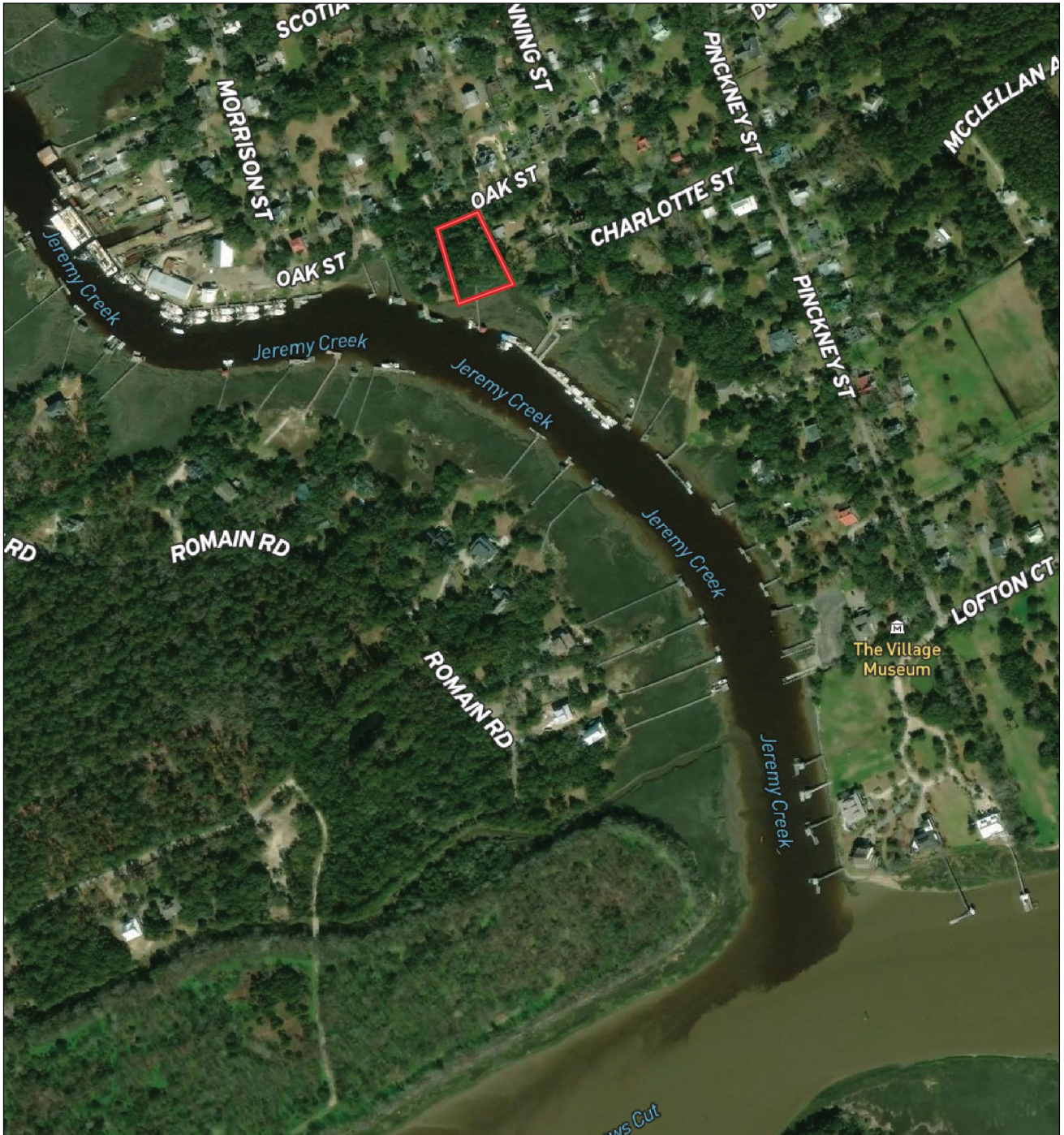
*Left Bedroom with Two Queen Beds, Right Bedroom with Original Exposed Beadboard and Full Bath with Tile Walk-in Shower*





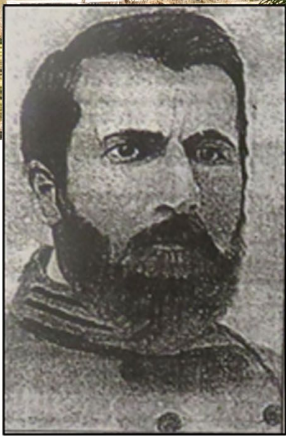
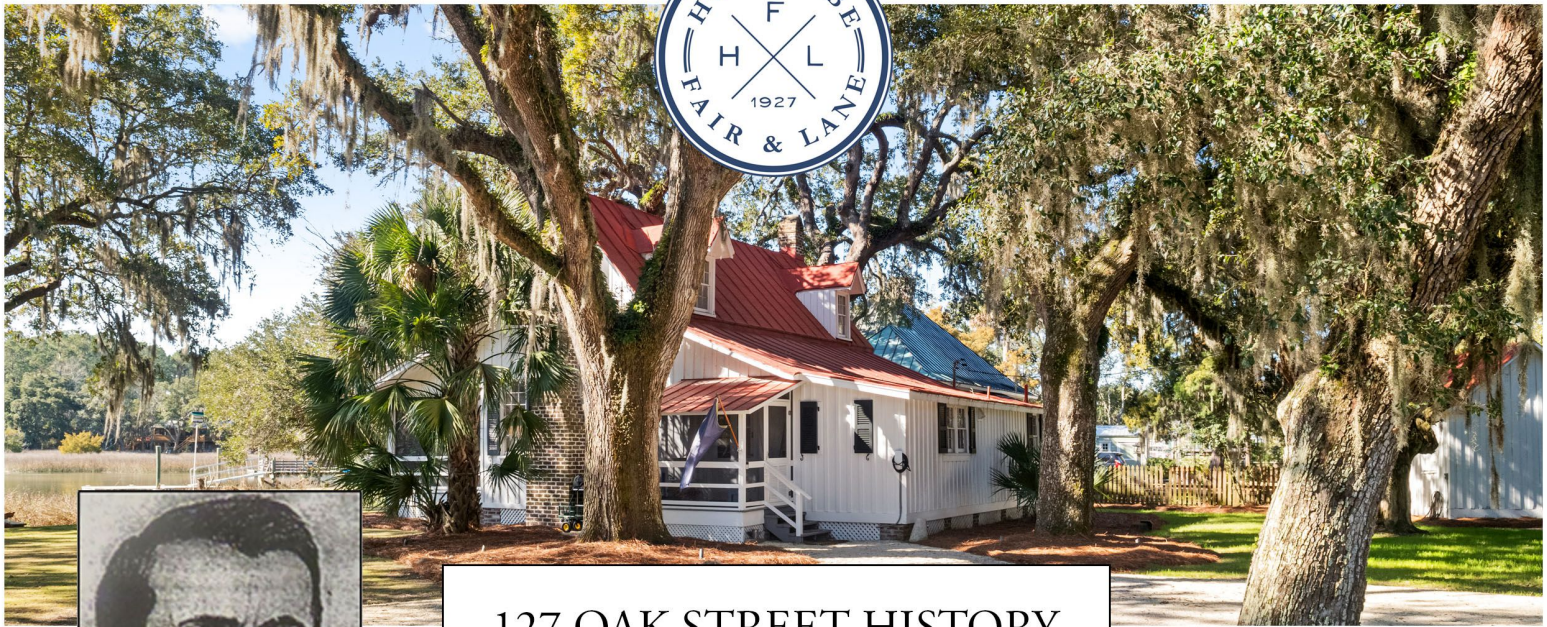


## PROPERTY BOUNDARIES



Estimate boundary, not to be assumed as accurate





Louis Augustus Whilden

## 127 OAK STREET HISTORY

### Louis Augustus Whilden House, Circa 1862

Capt. Louis Augustus Whilden 1832 - 1864

Spouse: Sarah Claudia Morrison

Children: Elias John Whilden, Elizabeth Morrison Whilden

Burial Marker at Old Wappetaw Cemetery, Awendaw

### Doar's "Health Care" Office & Kitchen Building c. 1870

Stephen Decatur Doar, MD 1838 - 1923 (aged 85)  
Burial: Walnut Grove Plantation Cemetery, Awendaw

From his obituary:

"...The oldest male inhabitant of McClellanville...Dr. Doar was a lifetime resident here and leaves a number of devoted relatives and friends, many of whom he served as a family physician."

All three structures are listed on the National Register as part of the McClellanville Historic District







## PROPERTY LOCATION

