

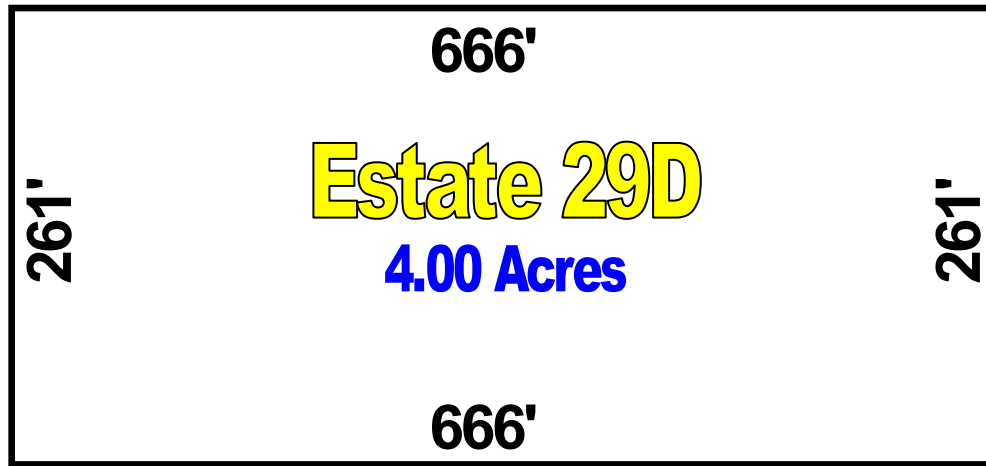


Settler's Ridge Sales Plat

192nd Terrace

Map Not to Scale

Home



105th Drive

Home

*Refer to recorded plat for survey details

Automatic, Non-Qualifying Seller Financing is available with NO Pre-Payment Penalties

Estate	Acreage	Sales Price	Down	Monthly	Rate	Term
29D	4.00	\$64,995	\$6,495	\$515	9.50%	24 Years