

**7.47± ACRES**  
**RHEA COUNTY, TN**  
**\$94,000**



**SMALLTOWN**  
HUNTING PROPERTIES  
& REAL ESTATE<sup>SM</sup>

OFFICE (423) 568-8339

# THE RHEA 7.47

## PROPERTY PROFILE

### LOCATION:

- 1094 Rhea County Highway  
Dayton, TN 37321
- Rhea County
- 4.5± Miles S of Dayton
- 16± Miles NW of Georgetown
- 30± Miles N of Chattanooga

### COORDINATES:

- 35.437991, -85.071491

### TAX INFORMATION:

2024 - TBD

- Tax ID - 107 017.06

### PROPERTY USE:

- Development
- Homesteading
- Recreation
- Potential Mini-Farm

### PROPERTY INFORMATION:

- 7.47± Surveyed Acres
- Access off Rhea  
County Highway
- Gravel Driveway
- Multiple Home Sites
- Power Available at the Road
- Small Stream



**SMALLTOWN**  
HUNTING PROPERTIES  
& REAL ESTATE<sup>SM</sup>

**JASON HEATHCOE**

PRINCIPAL BROKER

C: 931-808-0624

O: 423-568-8339

[jason@smalltownproperties.com](mailto:jason@smalltownproperties.com)

P.O. Box 9 - Birchwood, TN 37308

[smalltownproperties.com](http://smalltownproperties.com)

Information is believed to be accurate but not guaranteed.

# WELCOME TO THE RHEA 7.47

ARE YOU SEARCHING FOR A QUIET COUNTRY SETTING TO BUILD YOUR DREAM HOME? THE RHEA 7.47 IS ONE TO CONSIDER! As you enter the property off Rhea County Highway, less than five miles south of Dayton, TN, you will get that "at home" feeling. This 7.47± acre property (Tract #4) is one of only ten tracts in the development. It seems as if this place was designed to provide a peaceful living setting, complete with ridge line views, all while being just minutes from the amenities of town. There is a small stream where kids can play in the summertime, exploring the rocks looking for tadpoles, lizards, and other critters. While evaluating the land, there was ample whitetail deer sign noted. Just imagine enjoying the local wildlife right off your back porch! There could be opportunities to bow hunt on this property as well. Power is available at the road, and water is in the process of coming to the road. The Rhea 7.47 is enticing and definitely worth visiting. Jump on the opportunity to build your mini-farm; this would be a great place to call home!

**Call Jason Heathcoe today to schedule a private showing!**



**SMALLTOWN**  
HUNTING PROPERTIES  
& REAL ESTATE<sup>SM</sup>

**JASON HEATHCOE**

PRINCIPAL BROKER

C: 931-808-0624

O: 423-568-8339

[jason@smalltownproperties.com](mailto:jason@smalltownproperties.com)

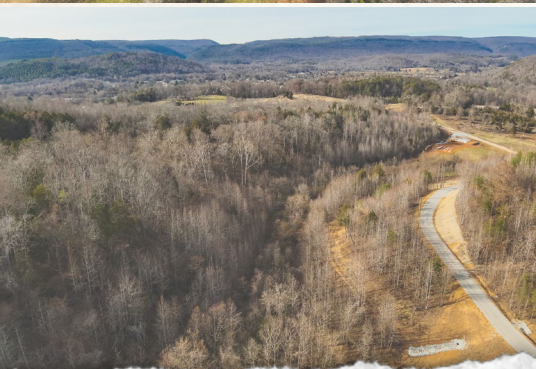
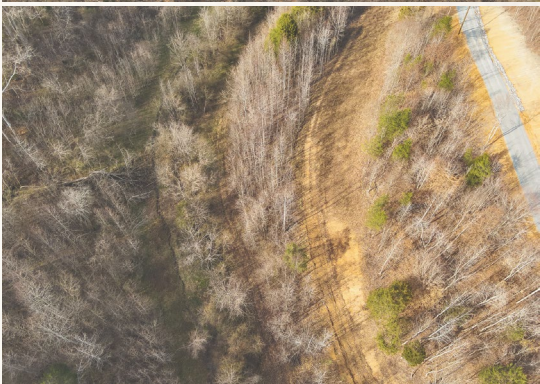
P.O. Box 9 - Birchwood, TN 37308

[smalltownproperties.com](http://smalltownproperties.com)

Information is believed to be accurate but not guaranteed.

7.47 ± ACRES

RHEA COUNTY, TENNESSEE



**SMALLTOWN**  
HUNTING PROPERTIES  
& REAL ESTATE<sup>SM</sup>

**JASON HEATHCOE**

PRINCIPAL BROKER

C: 931-808-0624

O: 423-568-8339

[jason@smalltownproperties.com](mailto:jason@smalltownproperties.com)

P.O. Box 9 - Birchwood, TN 37308

[smalltownproperties.com](http://smalltownproperties.com)

Information is believed to be accurate but not guaranteed.

7.47 ± ACRES

RHEA COUNTY, TENNESSEE



**SMALLTOWN**  
HUNTING PROPERTIES  
& REAL ESTATE<sup>SM</sup>

**JASON HEATHCOE**

PRINCIPAL BROKER

C: 931-808-0624

O: 423-568-8339

[jason@smalltownproperties.com](mailto:jason@smalltownproperties.com)

P.O. Box 9 - Birchwood, TN 37308

[smalltownproperties.com](http://smalltownproperties.com)

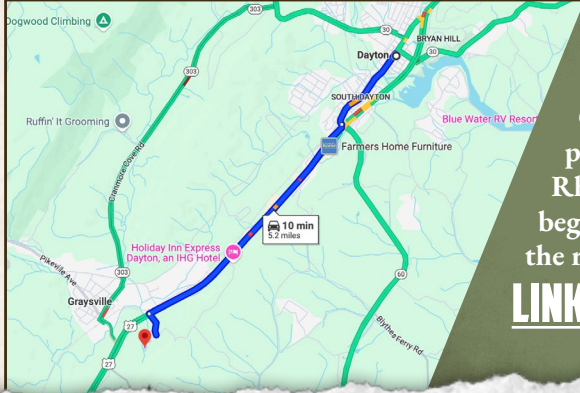
Information is believed to be accurate but not guaranteed.

7.47 ± ACRES

RHEA COUNTY, TENNESSEE



land id. LINK



Directions From Dayton, TN:  
Travel 4.5 miles south on Rhea County Highway. The entrance to the property is located on the left side of Rhea County Highway. The property begins 0.3 miles down the gravel road on the right.

[LINK TO GOOGLE MAP DIRECTIONS](#)



**SMALLTOWN**  
HUNTING PROPERTIES  
& REAL ESTATE<sup>SM</sup>

**JASON HEATHCOE**

PRINCIPAL BROKER

C: 931-808-0624

O: 423-568-8339

[jason@smalltownproperties.com](mailto:jason@smalltownproperties.com)

P.O. Box 9 - Birchwood, TN 37308

[smalltownproperties.com](http://smalltownproperties.com)

Information is believed to be accurate but not guaranteed.