



SMALLTOWN
HUNTING PROPERTIES
& REAL ESTATESM

10± ACRES
KEMPER COUNTY, MS
\$30,000



OFFICE (662) 338-2027 | WWW.SMALLTOWNPROPERTIES.COM

THE KEMPER 10

PROPERTY PROFILE

LOCATION:

- Air Base Road
Preston, MS 39354
- Kemper County
- 11± Miles W of DeKalb
- 15± Miles E of Philadelphia
- 21± Miles W of Scooba

COORDINATES:

- 32.78239, -88.84132

TAX INFORMATION:

- TBD

PROPERTY USE:

- Potential Homesite
- Recreational

PROPERTY INFORMATION:

- 10± Acres
- Utilities at the Road
- Recently Clear Cut
- Paved Road Frontage



SMALLTOWN
HUNTING PROPERTIES
& REAL ESTATE™



MICHAEL COOPER | MANAGING BROKER
C: 662-285-8686 | mcooper@smalltownproperties.com

JACOB HANSON | LAND SPECIALIST
C: 662-386-3814 | jacob@smalltownproperties.com

Information is believed to be accurate but not guaranteed.

501 Hwy 12 W Ste.150B - Starkville, MS 39071 | O: 662-338-2027 | smalltownproperties.com

WELCOME TO THE KEMPER 10

OWN A SLICE OF COUNTRY LIVING IN KEMPER COUNTY, MS! This 10± acre property is the perfect piece of land for your dream home or weekend retreat! Recently clear-cut, the property offers a potential homesite with paved road frontage for easy access. Nestled in a peaceful country setting, you'll enjoy privacy while still having the conveniences of utilities available at the road. Whether you're looking for a place to build, invest, or enjoy recreational activities, this versatile property offers endless potential.

Call Michael Cooper or Jacob Hanson today!



MICHAEL COOPER | MANAGING BROKER
C: 662-285-8686 | mcooper@smalltownproperties.com



SMALLTOWN
HUNTING PROPERTIES
& REAL ESTATE™



JACOB HANSON | LAND SPECIALIST
C: 662-386-3814 | jacob@smalltownproperties.com

10± ACRES

KEMPER COUNTY, MISSISSIPPI



SMALLTOWN
HUNTING PROPERTIES
& REAL ESTATE™



JACOB HANSON | LAND SPECIALIST
C: 662-386-3814 | jacob@smalltownproperties.com

MICHAEL COOPER | MANAGING BROKER
C: 662-285-8686 | mcooper@smalltownproperties.com

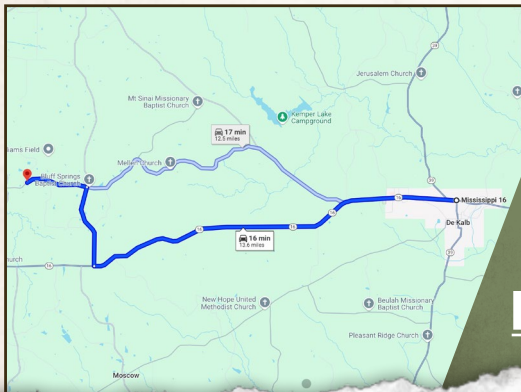
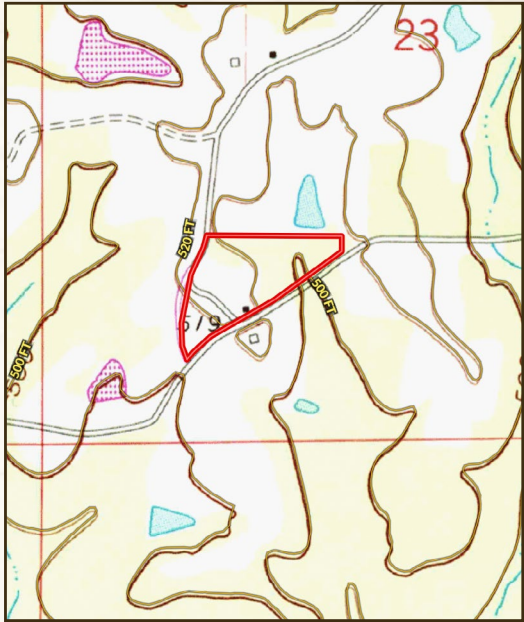
Information is believed to be accurate but not guaranteed.

10± ACRES

KEMPER COUNTY, MISSISSIPPI

land id. LINK

TOPOGRAPHY MAP



Directions From the Intersection of Hwy 16 and Hwy 39 in Dekalb, MS: Travel 9.6 miles west on Highway 16. Turn right onto Hwy 493 N and proceed 2.2 miles. Turn left onto Air Base Road and in 1.6 miles the destination will be on the right.

LINK TO GOOGLE MAP DIRECTIONS



MICHAEL COOPER | MANAGING BROKER
C: 662-285-8686 | mcooper@smalltownproperties.com



SMALLTOWN
HUNTING PROPERTIES
& REAL ESTATE™

Information is believed to be accurate but not guaranteed.



JACOB HANSON | LAND SPECIALIST
C: 662-386-3814 | jacob@smalltownproperties.com