



# *Falls Peak Ranch*

1101 Crider Rd, Marble Falls, TX

130 Acres | \$3,750,000



Copyright 2025 Grand Land Realty, LLC  
The material contained in this document is based in part upon information furnished to Grand Land Realty, LLC. by sources deemed to be reliable. The information is believed to be accurate in all material respects, but no representation or warranty, expressed, or implied, as to list accuracy or completeness is made by any party. Recipients should conduct their own investigation and analysis of the information described herein.



*Craig Bowen*

*Broker Associate*

*[craig@grandland.com](mailto:craig@grandland.com)*

*(512) 571-4305*

# PROPERTY DESCRIPTION

---

Less than 10 miles north of Marble Falls, this near-urban ranch boasts over 300 feet of elevation change, all-weather roads, two water wells, a barndominium + workshop, and one of the best views in Central Texas. Packed with potential for residential and recreational use, Falls Peak Ranch is a functioning mountain bike park but would be best suited for an individual or family compound taking advantage of the panoramic views from multiple homesites and easy access to all things Hill Country.

From the entrance of Falls Peak Ranch, the crushed granite road meanders through oak trees and climbs in elevation to a hidden hilltop that overlooks Marble Falls and the Colorado River Valley. Abundant Live Oak savannah provides habitat for white-tailed deer, wild turkey, feral hogs, small mammals, and dozens of species of birds. A small, ephemeral creek runs from the hilltop down the center of the property, where taller Cedar Elm trees and mature Oaks provide shade. Hidden in this creek is a granite cliff face with a series of unique caves that are one of the true gems of Falls Peak. Several small ponds occur along the creek, creating duck, heron, and egret habitats, and providing water for all the Hill Country critters.

There are multiple building sites facing east and south, with a hilltop building site that has a potential 360-degree view. These are truly some of the best homesites on the market, you do not want to miss them!

Copyright 2025 Grand Land Realty, LLC  
The material contained in this document is based in part upon information furnished to Grand Land Realty, LLC. by sources deemed to be reliable. The information is believed to be accurate in all material respects, but no representation or warranty, expressed, or implied, as to list accuracy or completeness is made by any party. Recipients should conduct their own investigation and analysis of the information described herein.



*Craig Bowen*  
*Broker Associate*  
*craig@grandland.com*  
*(512) 571-4305*



*Falls Peak Ranch | Marble Falls, TX*

## TREES

Live Oak  
Cedar Elm

## IMPROVEMENTS

1200 sq ft 2 Bed/ 2 Bath  
Barndominium with 900 sq  
ft workshop  
1100 sq ft Pole Barn

## WATER

2 water wells with  
attached windmills,  
storage tanks, and one  
solar pump.

Wet Weather Creek

## UTILITIES

Electric provided by  
Pedernales Electric Co-op

Copyright 2025 Grand Land Realty, LLC  
The material contained in this document is  
based in part upon information furnished to  
Grand Land Realty, LLC. by sources deemed  
to be reliable. The information is believed to  
be accurate in all material respects, but no  
representation or warranty, expressed, or  
implied, as to list accuracy or completeness  
is made by any party. Recipients should  
conduct their own investigation and analysis  
of the information described herein.



*Craig Bowen*  
*Broker Associate*  
*craig@grandland.com*  
*(512) 571-4305*



SCAN HERE TO VIEW MORE OF  
FALLS PEAK RANCH

## LOCATION

---

Burnet County

9.3 miles from Marble Falls via FM 1431 and FM 1980, 1 hour from Austin- Bergstrom International Airport, 1.5 hours from San Antonio.

## DIRECTIONS

---

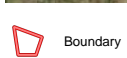
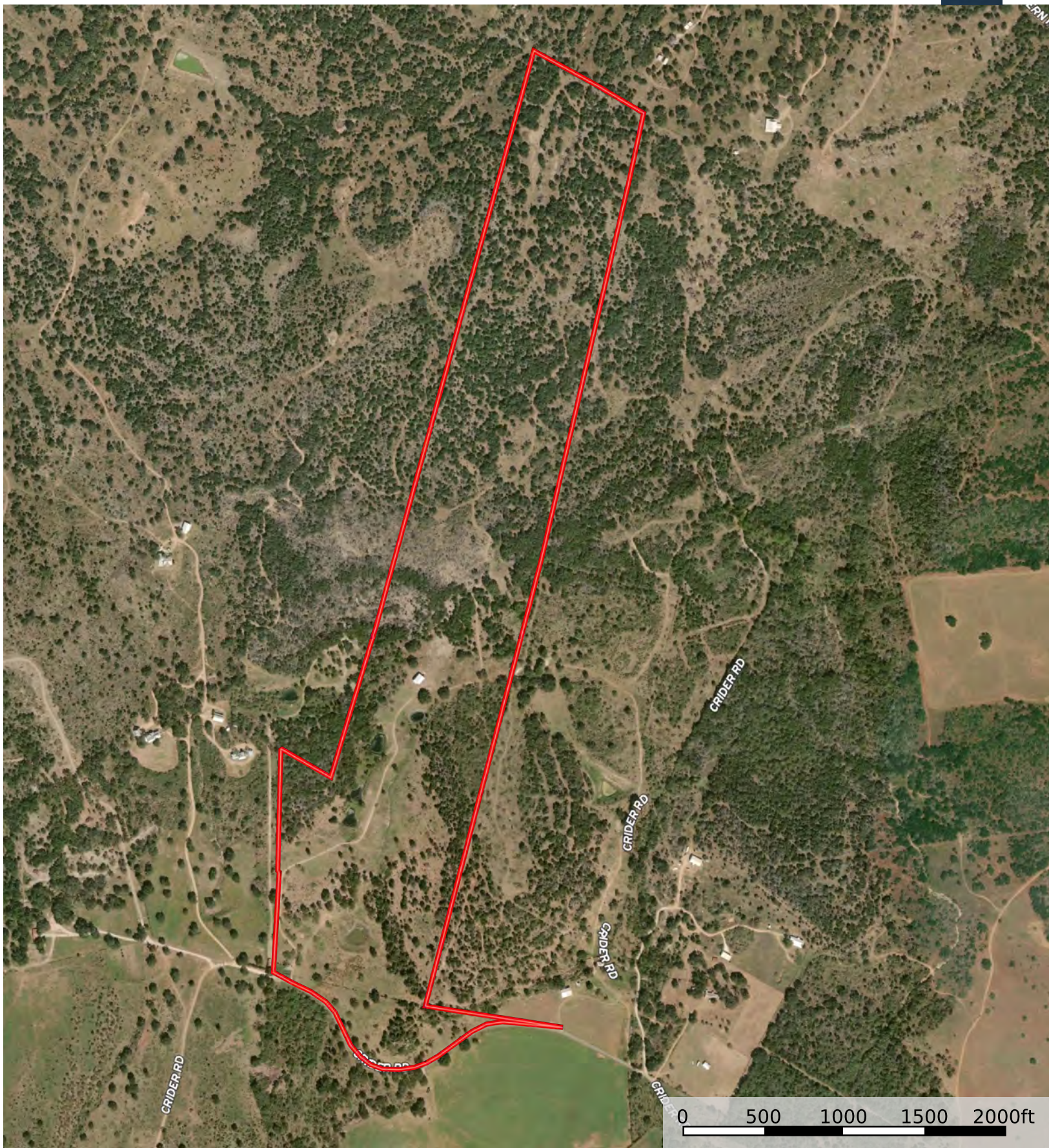
From Marble Falls, head west on FM 1431 for 2.4 miles, then turn right on FM 1980 / Tobyville Cemetery Rd. In 4 miles, turn left on Crider Rd (across Fairland Rd). Property is on the right after 2 miles.

Copyright 2025 Grand Land Realty, LLC  
The material contained in this document is based in part upon information furnished to Grand Land Realty, LLC. by sources deemed to be reliable. The information is believed to be accurate in all material respects, but no representation or warranty, expressed, or implied, as to list accuracy or completeness is made by any party. Recipients should conduct their own investigation and analysis of the information described herein.



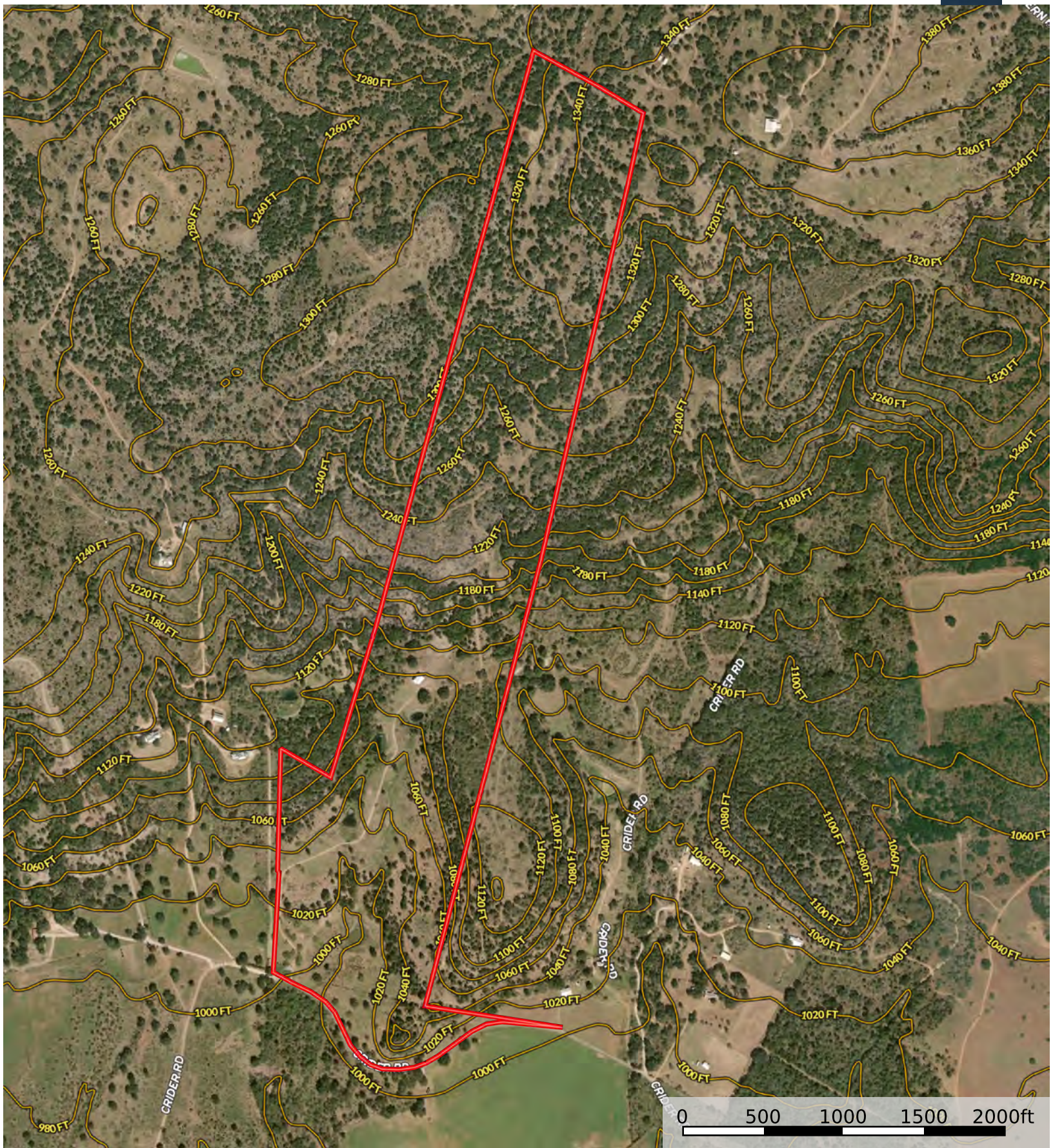
*Craig Bowen*  
*Broker Associate*  
*craig@grandland.com*  
*(512) 571-4305*





Boundary



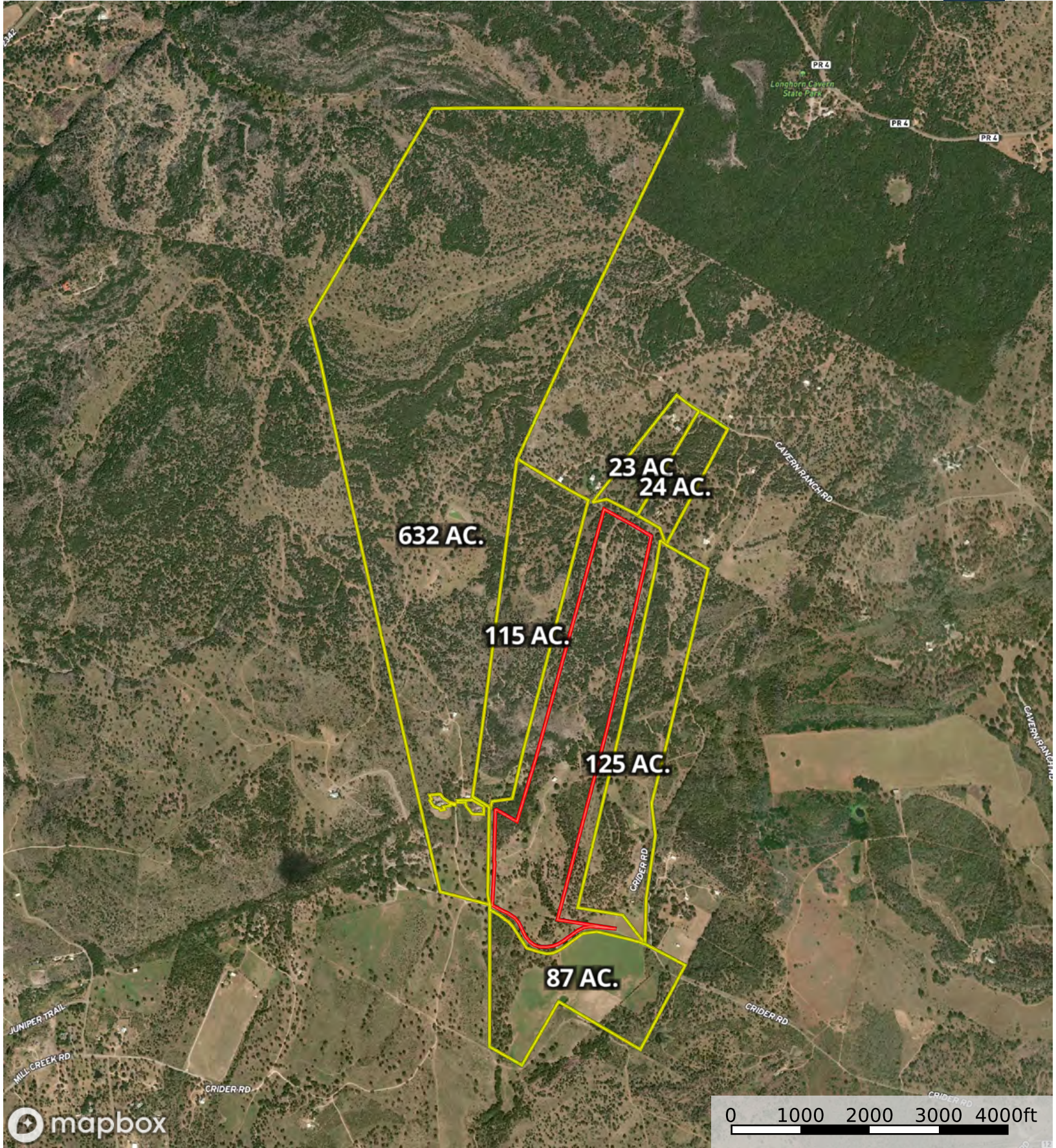


Boundary



Boundary





Boundary 1 Boundary