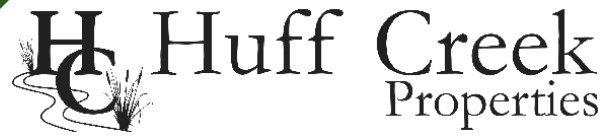


McGullion Mountain Tract

Shady Grove Road | Pickens, SC 29685



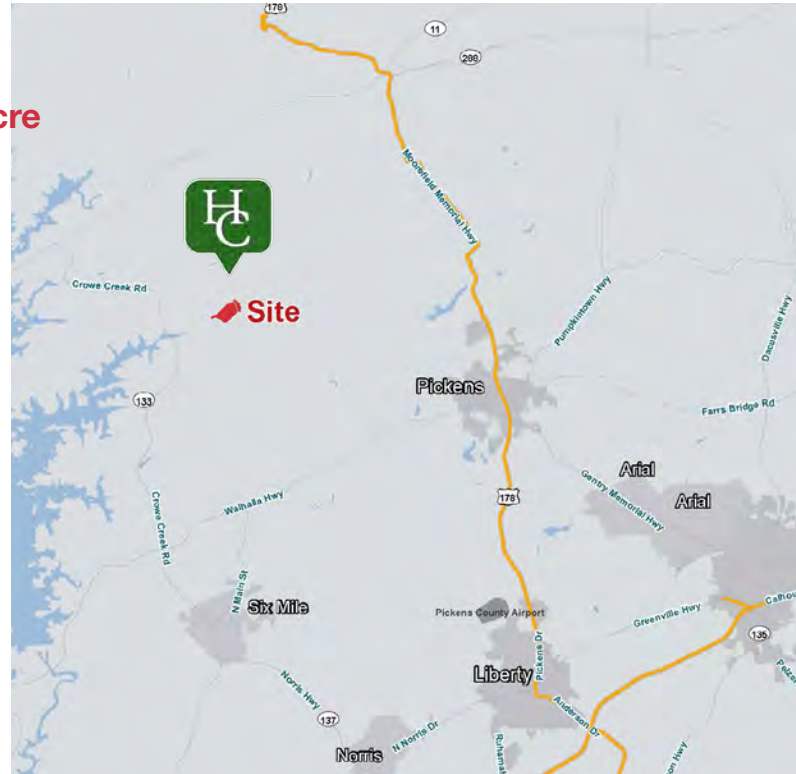
NEW PRICE: \$999,999.00

VIEW SITE VIDEO



Property Features

- Pickens County Tax Map #4152-00-54-3144 & 4152-00-64-5944
- Asking Price: ~~\$9,500/Acre~~ **REDUCED: \$9,103/Acre**
- ±109.85 acres
- Small creeks run along the NE & SW boundaries with frontage along Katoma Branch at both locations
- Max elevation of 1,352' with 360-degree views
- ±4 acre knoll with level topo at the highest point elevation
- ±2 acre bottom field
- ±710' frontage on Shady Grove Road
- 45 minutes from downtown Greenville
- 30 minutes from Clemson University
- Excellent deer and turkey population
- Surveys available upon request



Rusty Hamrick
+1 864 232 9040
rhamrick@naiearlefurman.com

John Etheridge
+1 864 232 9040
jetheridge@naiearlefurman.com

101 E Washington St
Greenville, SC 29601
huffcreekproperties.com

Property Description

Shady Grove Road | Pickens, SC 29685



The McGullion Mountain tract presents a unique opportunity to own 109.85 acres in one of the most beautiful areas of upstate South Carolina. The peak of the property is truly stunning. A 1+ acre knoll with level topography sits at the highest point of elevation (1,352') and offers a future homesite offering 360-degree views of Lake Keowee and the surrounding Blue Ridge range. The steepness of the northeast face of McGullion mountain is very manageable and establishing a road to the peak appears quite feasible.

Mature hardwoods make up most of the property with the balance consisting of a +/-2-acre bottom field perfect for food plots. A small creek borders the bottom field for +/-1,800' further enhancing this major wildlife corridor. A second creek runs along the southwest boundary and the property includes Katoma Branch frontage on the northwest and southwest corners as well. These water features complement the existing wildlife habitat helping the deer and turkey numbers thrive.

The McGullion Mountain tract has tremendous potential for a future private estate or as a recreational haven. Do not miss out on this opportunity of a lifetime to purchase your very own mountain!



Rusty Hamrick

+1 864 232 9040

rhamrick@naiearlefurman.com

John Etheridge

+1 864 232 9040

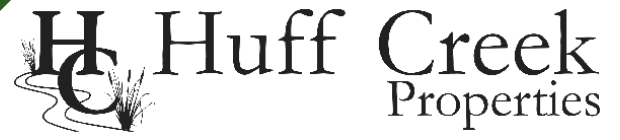
jetheridge@naiearlefurman.com

No Warranty Or Representation, Express Or Implied, Is Made As To The Accuracy Of The Information Contained Herein, And The Same Is Submitted Subject To Errors, Omissions, Change Of Price, Rental Or Other Conditions, Prior Sale, Lease Or Financing, Or Withdrawal Without Notice, And Of Any Special Listing Conditions Imposed By Our Principals No Warranties Or Representations Are Made As To The Condition Of The Property Or Any Hazards Contained Therein Are Any To Be Implied.

The Timber and Recreational Land Division of NAI Earle Furman

Property Photos

Shady Grove Road | Pickens, SC 29685



Rusty Hamrick
+1 864 232 9040
rhamrick@naiearlefurman.com

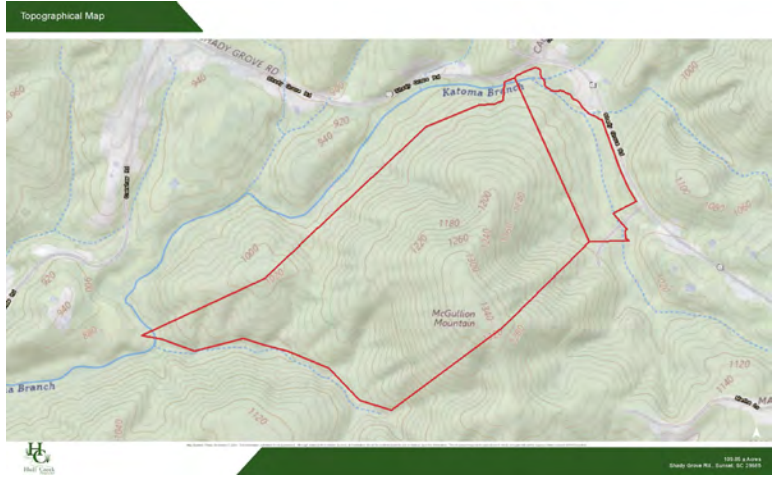
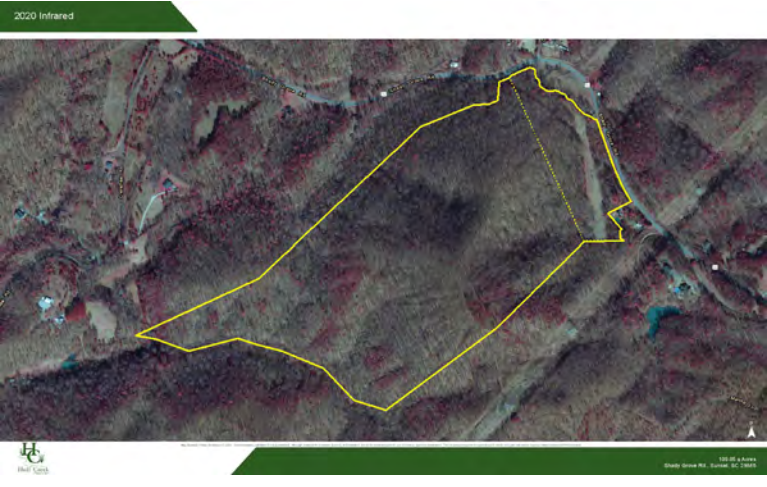
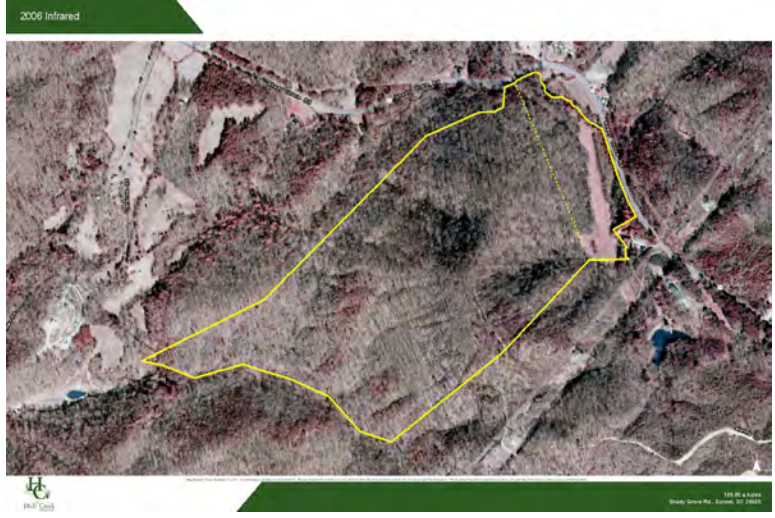
John Etheridge
+1 864 232 9040
jetheridge@naiearlefurman.com

No Warranty Or Representation, Express Or Implied, Is Made As To The Accuracy Of The Information Contained Herein, And The Same Is Submitted Subject To Errors, Omissions, Change Of Price, Rental Or Other Conditions, Prior Sale, Lease Or Financing, Or Withdrawal Without Notice, And Of Any Special Listing Conditions Imposed By Our Principals No Warranties Or Representations Are Made As To The Condition Of The Property Or Any Hazards Contained Therein Are Any To Be Implied.

The Timber and Recreational Land Division of NAI Earle Furman

Map Set

Shady Grove Road | Pickens, SC 29685



Rusty Hamrick
+1 864 232 9040
rhamrick@naiearlefurman.com

John Etheridge
+1 864 232 9040
jetheridge@naiearlefurman.com

No Warranty Or Representation, Express Or Implied, Is Made As To The Accuracy Of The Information Contained Herein, And The Same Is Submitted Subject To Errors, Omissions, Change Of Price, Rental Or Other Conditions, Prior Sale, Lease Or Financing, Or Withdrawal Without Notice, And Of Any Special Listing Conditions Imposed By Our Principals No Warranties Or Representations Are Made As To The Condition Of The Property Or Any Hazards Contained Therein Are Any To Be Implied.

The Timber and Recreational Land Division of NAI Earle Furman