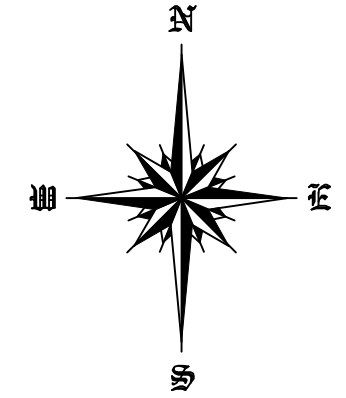
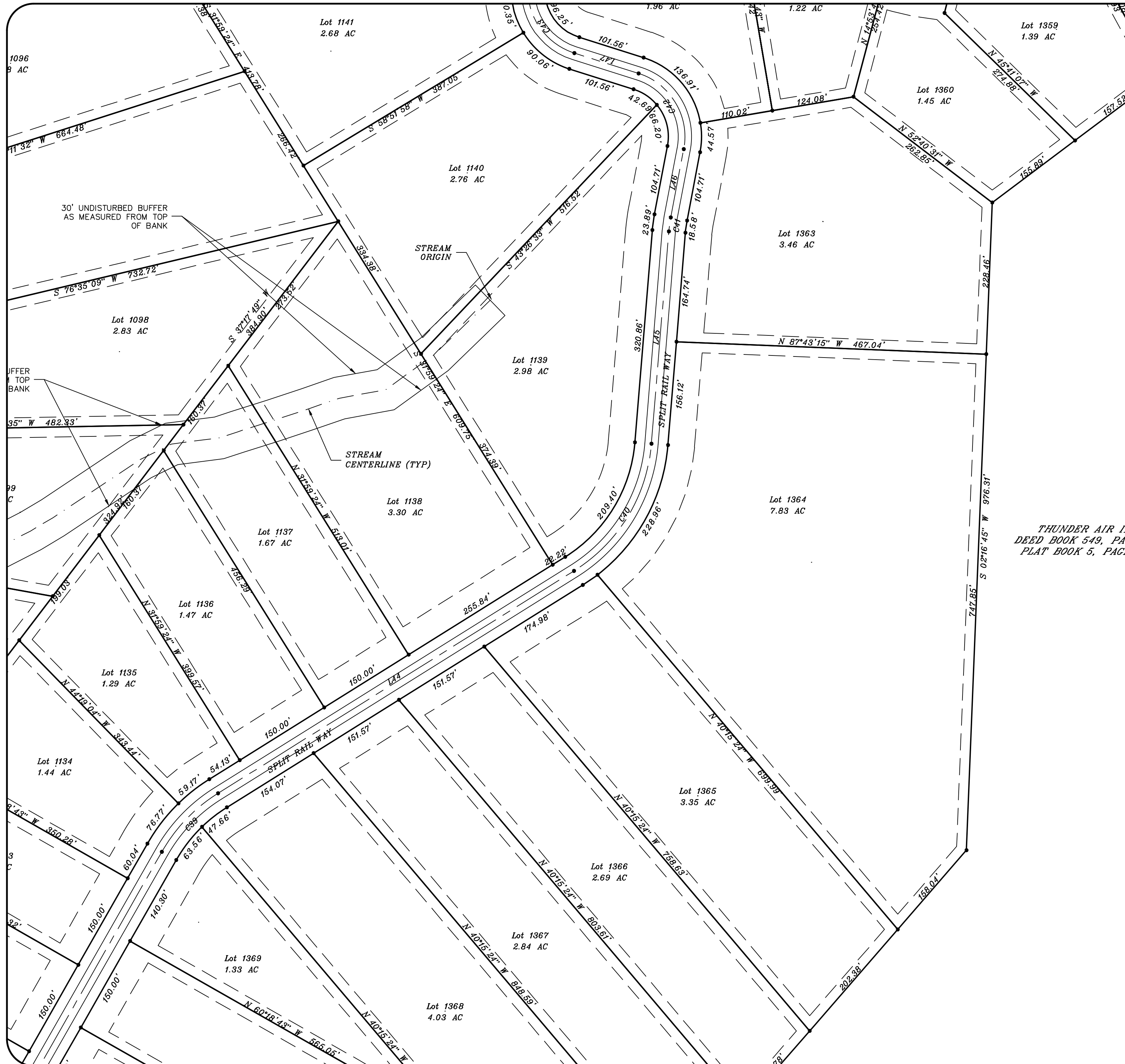
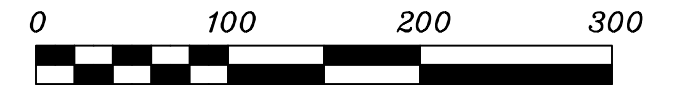


River Gorge Ranch Subdivision
Phase One
A Mountain Top Community
Sheet 15



Plat North: Tennessee State Plane (1983)



THUNDER AIR INC
DEED BOOK 549, PAGE 331
PLAT BOOK 5, PAGE 548

River Gorge Ranch Phase 1 Final Plat	
Deed Book 549, Page 331 (R.O.M.C.) Tax Map 146 Parcel 1.00	
Scale : 1" = 100'	Drawn By: JDE
Date: 02/26/2022	Approved By: JDE
Fourth Civil District	
Marion County, Tennessee	Drawing No: 22-0018