

**FOR  
SALE**

# ST. JOHNS RIVER POINT

DeBary, FL 32713



## ABOUT THE PROPERTY

**SIZE** 90.47± acres

**UTILITIES** Water, sewer, electric nearby

**RIVER FRONTAGE** 4,800'± on St. Johns River

**PARCEL ID** 893600000010

## DESCRIPTION

### **Build your dream St. Johns River Estate!**

This prime 90± acre property is a tranquil point on the beautiful St. Johns River, situated between Lake Berseford and Lake Monroe. Great location for conservation and mitigation.

This unique property is adjacent to nearby development Riviera Bella, 306-acre community with 700+ homesites.

**Call for more information today!**

**MAURY L. CARTER & ASSOCIATES, INC.**

Licensed Real Estate Brokers | [www.maurycarter.com](http://www.maurycarter.com) | 407-422-3144

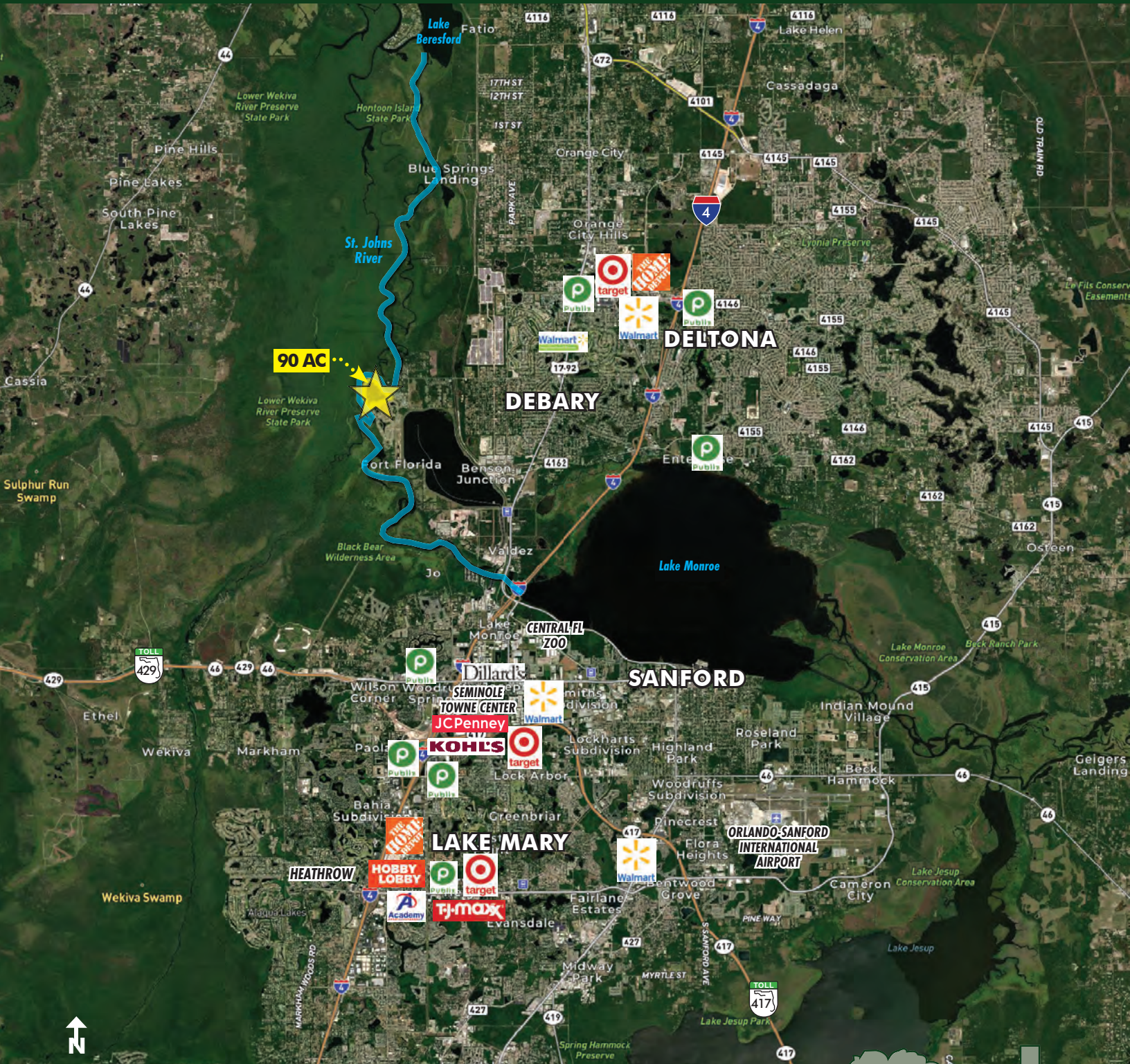
Offering subject to errors, omission, prior sale or withdrawal without notice.



**FOR  
SALE**

# ST. JOHNS RIVER POINT

DeBary, FL 32713



**REGIONAL MAP**

**MAURY L. CARTER & ASSOCIATES, INC.**

Licensed Real Estate Brokers | [www.maurycarter.com](http://www.maurycarter.com) | 407-422-3144

Offering subject to errors, omission, prior sale or withdrawal without notice.

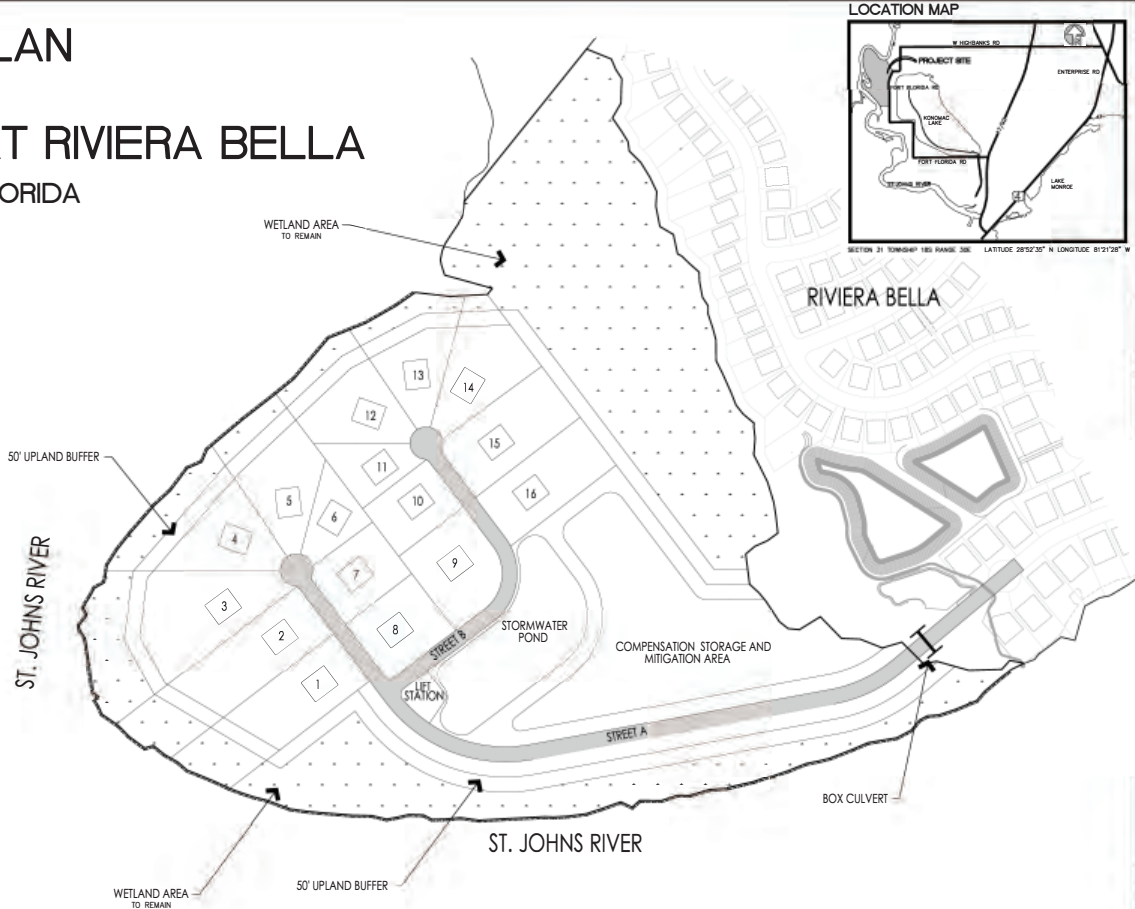


**FOR  
SALE**

# ST. JOHNS RIVER POINT

DeBary, FL 32713

## CONCEPT PLAN FOR THE POINT AT RIVIERA BELLA CITY OF DEBARY, FLORIDA



PROJECT NO.	
DATE	
SCALE	
DESIGNED BY	
DRAWN BY	
CHECKED BY	
DATE	
SHEET	1
NOT FOR CONSTRUCTION UNLESS SIGNED AND SEALED	
B&S ENGINEERING & ARCHITECTURE, LLC 2221 Lee Road, Ste. 17 Winter Park, FL 32789 (407) 939-0300 bbs@bbseng.com Board of Professional Engineers Certificate No. 28555	
JOB NO.: HC-001-03 DESIGNED BY: ES DRAWN BY: ES APPROVED BY: ES DATE: 03.20.13 SHEET: 1	
BARRY LEE CARTER, P.E. REGISTRATION NO. 75249	
DATE:	

### CONCEPT PLAN

## MAURY L. CARTER & ASSOCIATES, INC.

Licensed Real Estate Brokers | [www.maurycarter.com](http://www.maurycarter.com) | 407-422-3144

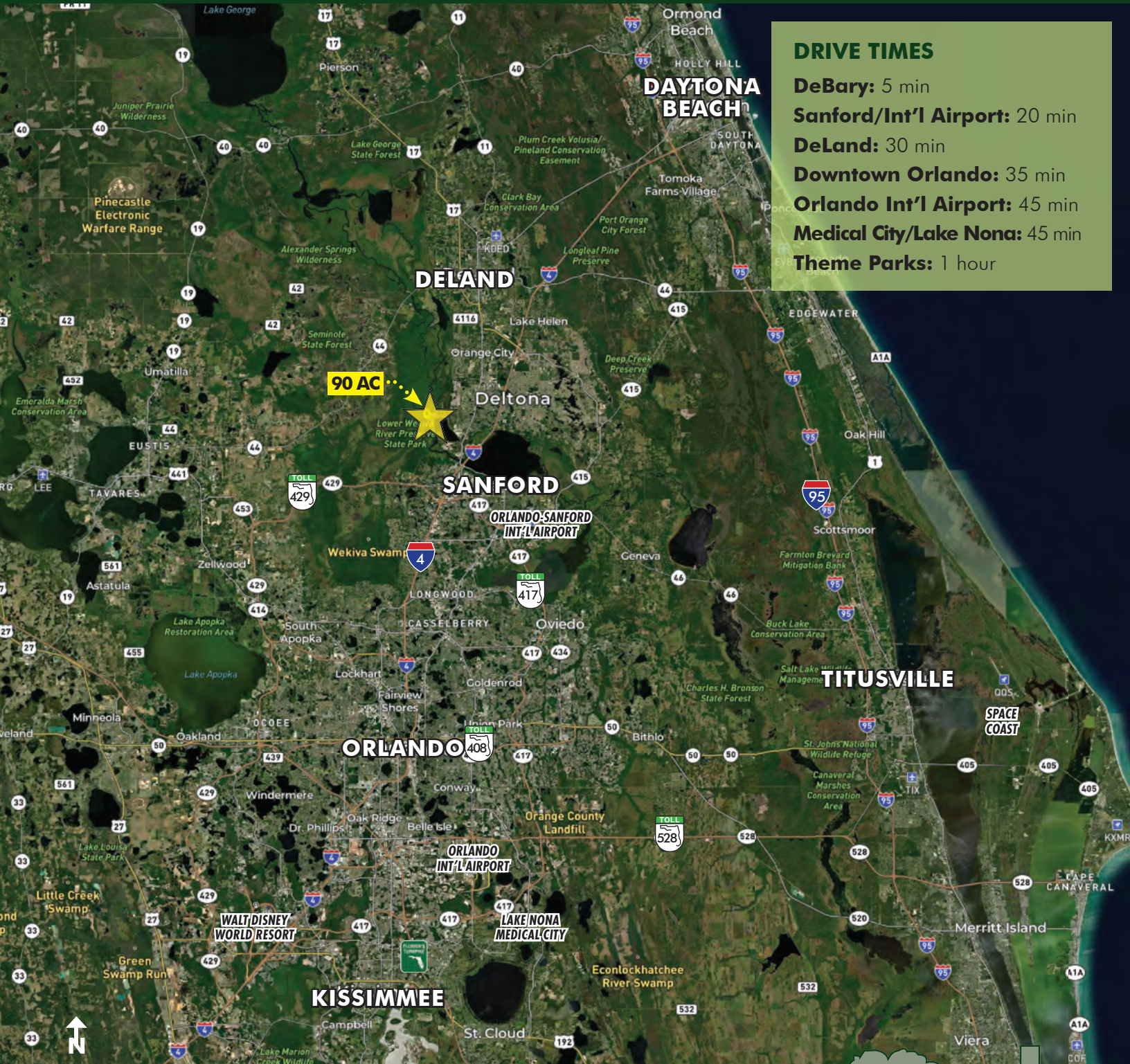
Offering subject to errors, omission, prior sale or withdrawal without notice.



**FOR  
SALE**

# ST. JOHNS RIVER POINT

DeBary, FL 32713



## LOCATION MAP

## MAURY L. CARTER & ASSOCIATES, INC.

Licensed Real Estate Brokers | [www.maurycarter.com](http://www.maurycarter.com) | 407-422-3144

Offering subject to errors, omission, prior sale or withdrawal without notice.

