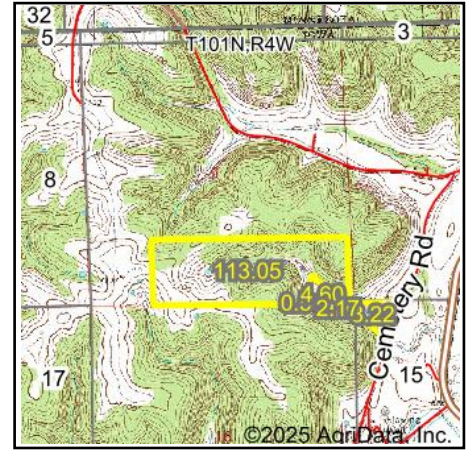
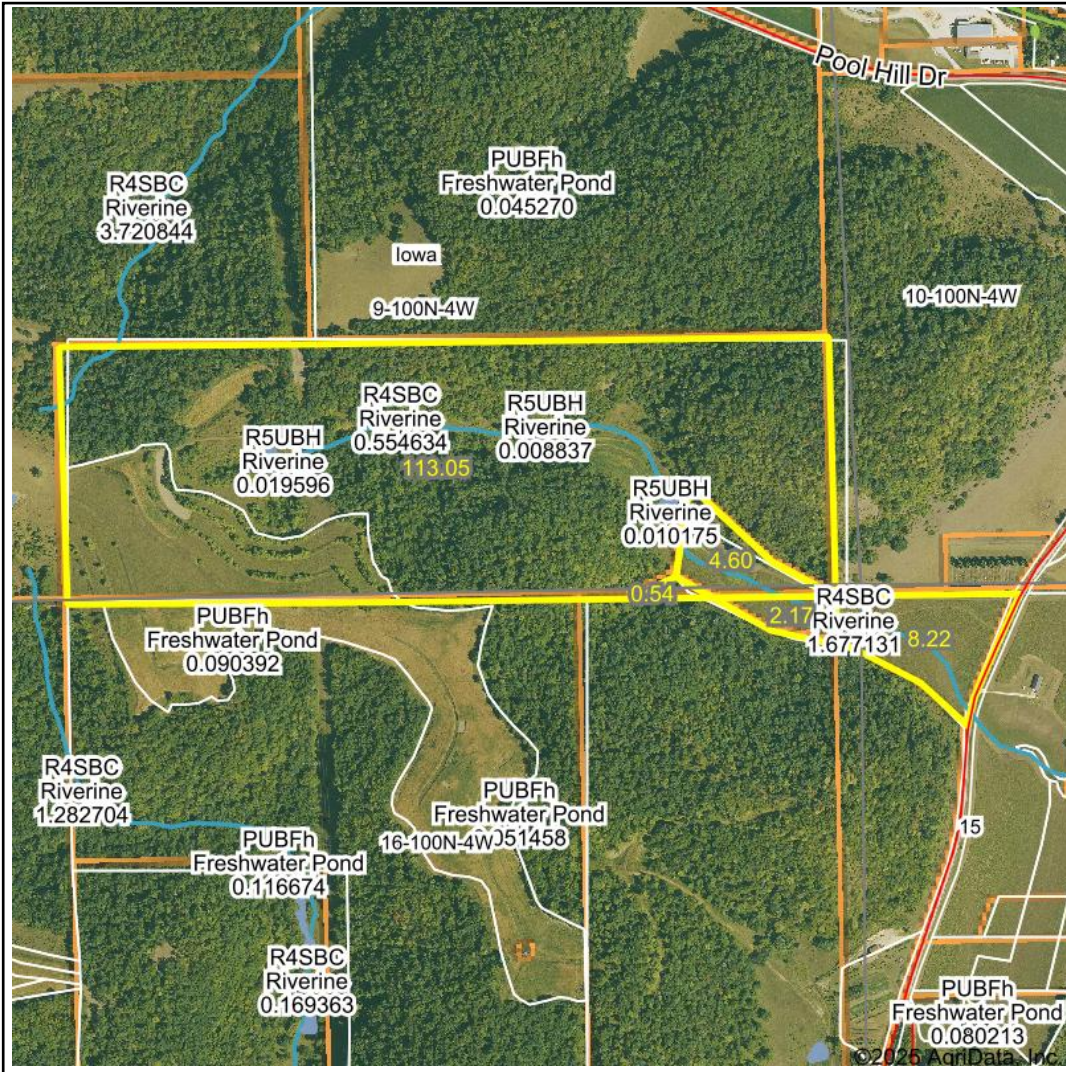


# Wetlands Map



**State:** Iowa  
**Location:** 9-100N-4W  
**County:** Allamakee  
**Township:** Iowa  
**Date:** 3/5/2025

Maps Provided By:  
  
CUSTOMIZED ONLINE MAPPING  
© AgriData, Inc. 2023 www.AgriDataInc.com



0ft                      1121ft                      2242ft

Classification Code	Type	Acres
R4SBC	Riverine	2.00
PUBFh	Freshwater Pond	0.83
R5UBH	Riverine	0.04
Total Acres		2.87

Data Source: National Wetlands Inventory website. U.S. DoI, Fish and Wildlife Service, Washington, D.C. <http://www.fws.gov/wetlands/>