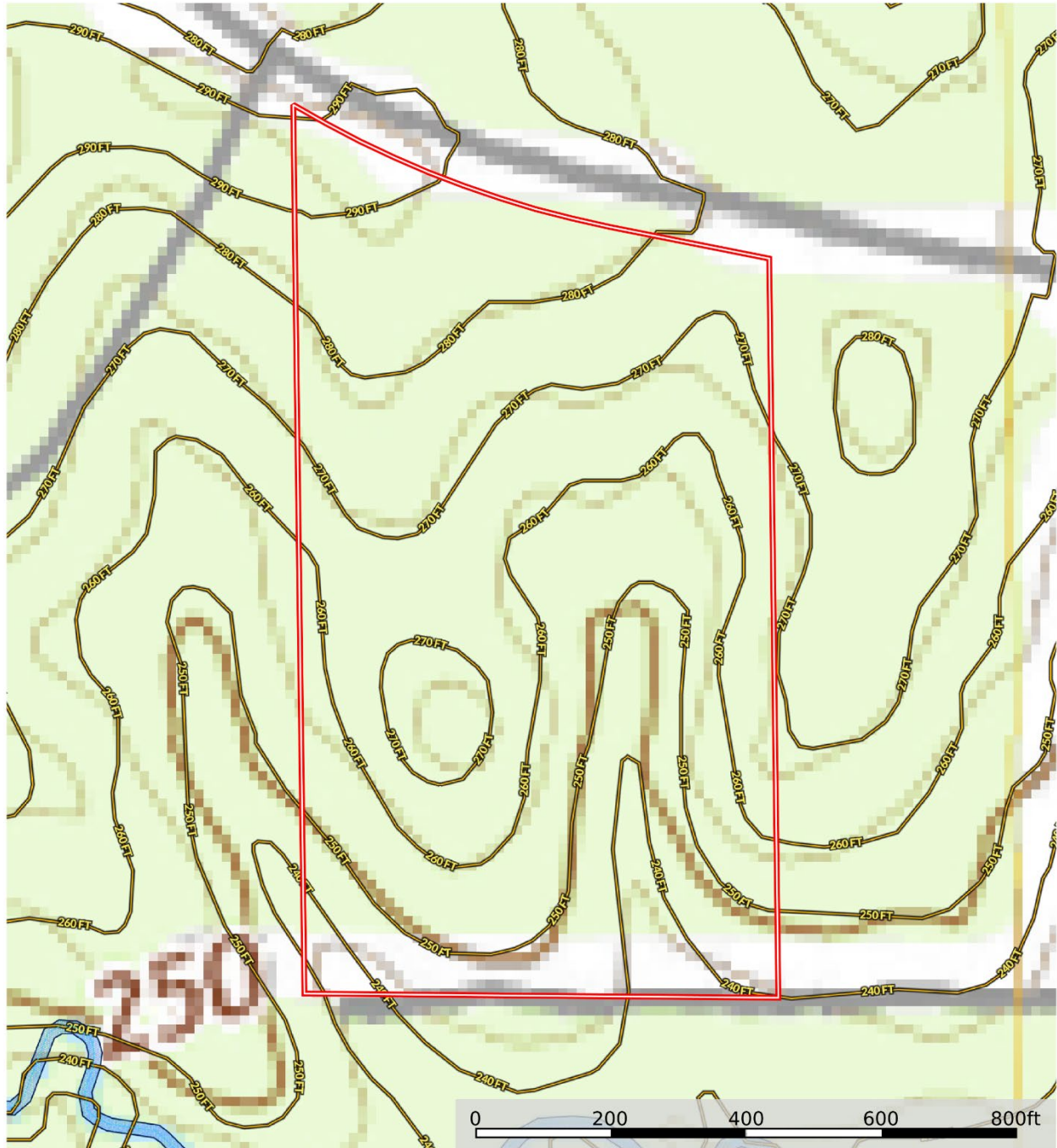


4495 FM 3065, Colmesneil,
TX, 75938

TOPO

Tyler
19.66+/- Acres

4495 FM 3065, Colmesneil, TX, 75938
Tyler County, Texas, 19.66 AC +/-



- Boundary
- 100 Year Floodplain
- 500 Year Floodplain
- Floodway
- Special
- Unmapped/ Not Included
- Wetlands
- Riparian
- Voltage Unavailable
- Voltage 0 - 99 KV
- Voltage 100 - 161 KV
- Voltage 220 - 287 KV
- Voltage 345 KV
- Voltage 500 KV
- Voltage 735 KV+
- Stream, Intermittent
- River/Creek
- Water Body

Wesley Kilpatrick

id. The information contained herein was obtained from sources deemed to be reliable. Land id™ Services makes no warranties or guarantees as to the completeness or accuracy thereof.



Data presented is for reference purposes only and cannot be guaranteed.

id. The information contained herein was obtained from sources deemed to be reliable. Land id™ Services makes no warranties or guarantees as to the completeness or accuracy thereof.

MORRIS
LAND BROKERS LLC