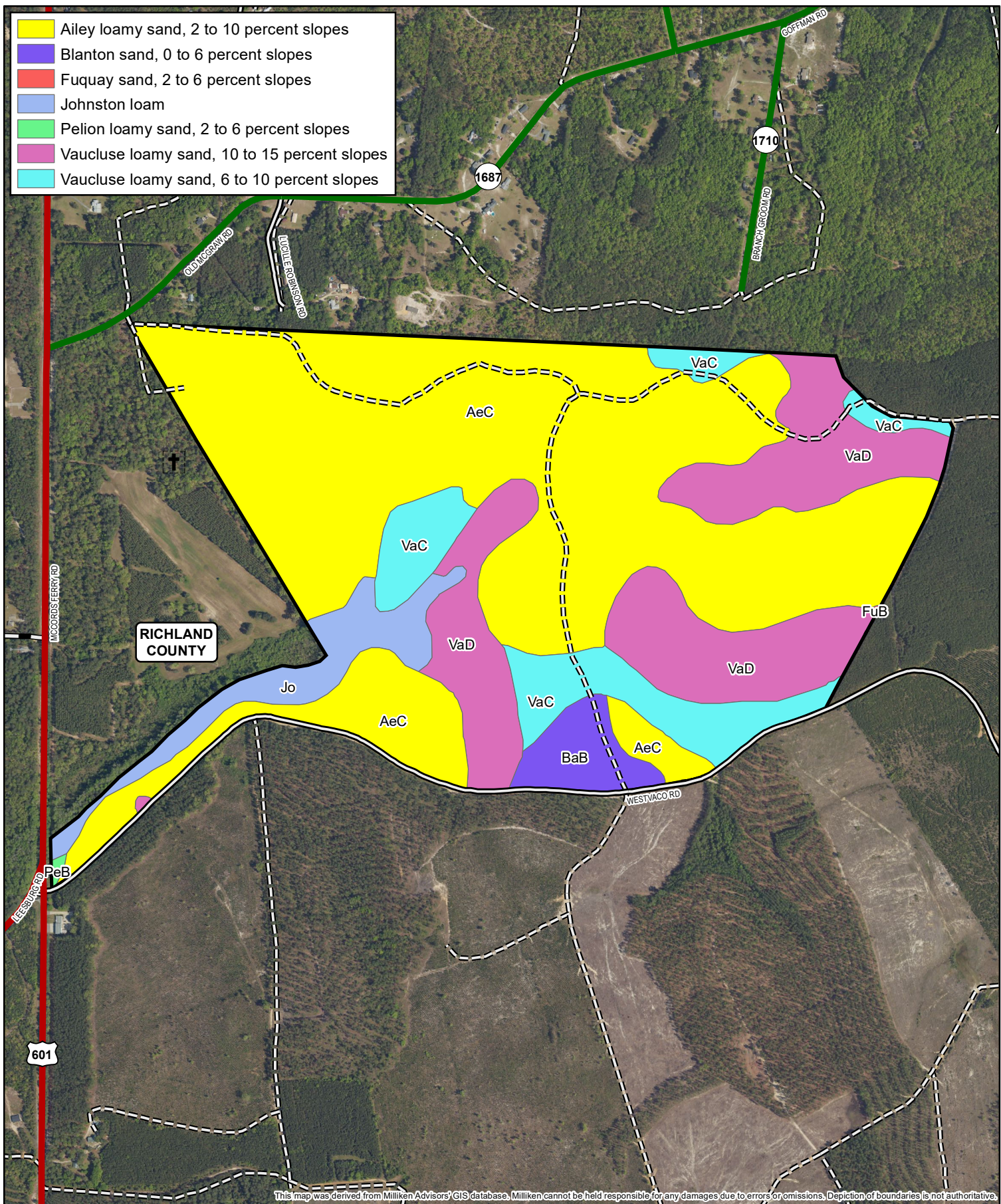
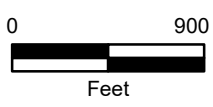
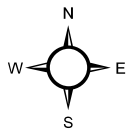


- Ailey loamy sand, 2 to 10 percent slopes
- Blanton sand, 0 to 6 percent slopes
- Fuquay sand, 2 to 6 percent slopes
- Johnston loam
- Pelion loamy sand, 2 to 6 percent slopes
- Vaucluse loamy sand, 10 to 15 percent slopes
- Vaucluse loamy sand, 6 to 10 percent slopes



This map was derived from Milliken Advisors' GIS database. Milliken cannot be held responsible for any damages due to errors or omissions. Depiction of boundaries is not authoritative.



Soils Map  
 Murray Tract, LLC  
 Murray #10 Tract  
 322.2± GIS Acres  
 Richland County, SC  
 February 2025