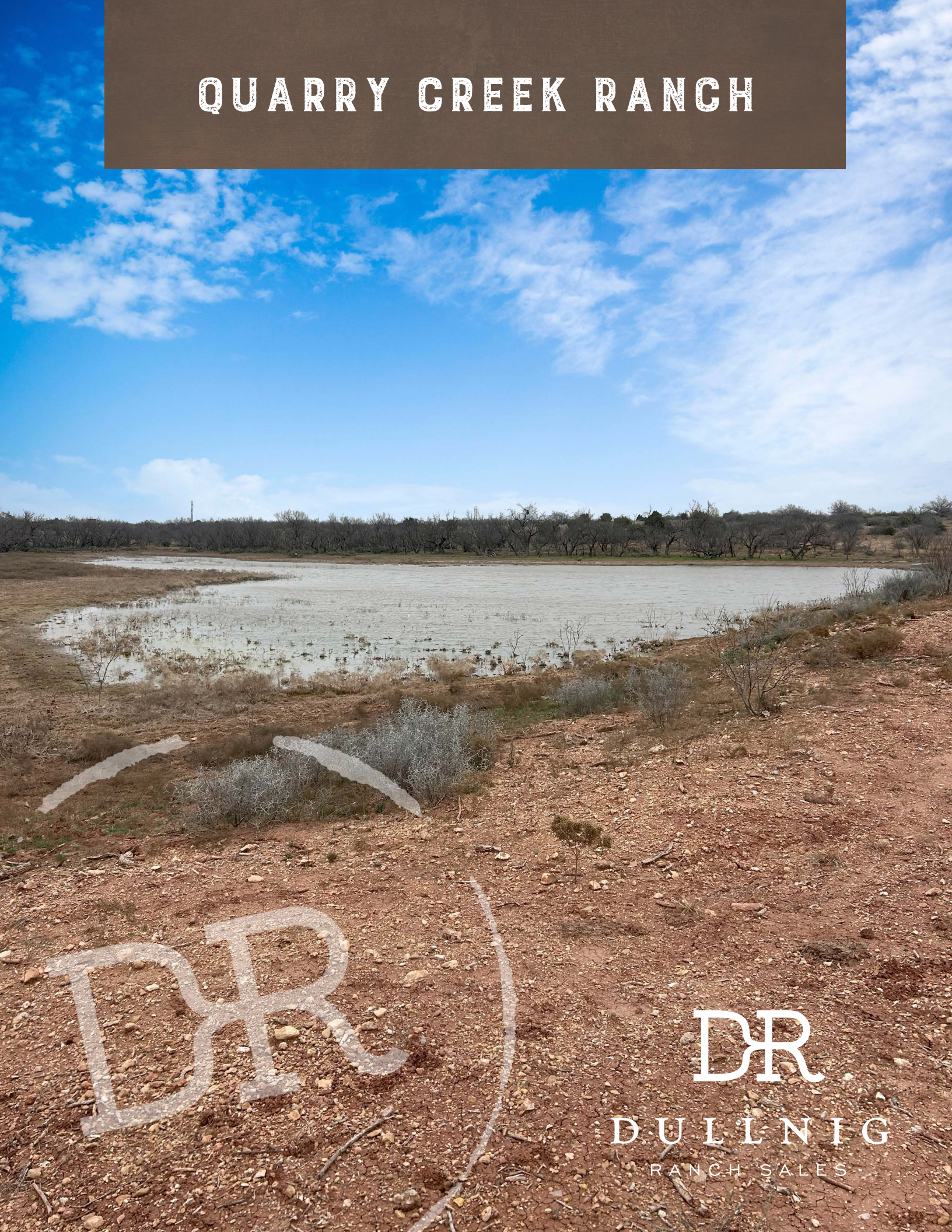


QUARRY CREEK RANCH



DR

DULLNIG

RANCH SALES

DESCRIPTION

The Quarry Creek Ranch offers endless possibilities for farming or ranching. Equipped with four stock tanks, and a convenient set of cattle pens, this property is set up for immediate use. Several areas have been selectively cleared, allowing you to develop it further. The property also features a scenic wet-weather creek. Beyond farming and ranching, the property offers great recreational potential whether you're looking to hunt or fish.

IMPROVEMENTS

The Quarry Creek Ranch includes a set of cattle pens, ideal for livestock management. The property also boasts a large wheat field, offering great potential for farming. The property has been selectively cleared, creating open spaces for grazing or further development. Additionally, electricity is already on-site, making it easy to build or add additional infrastructure.



948± Acres

Runnels County



948± Acres
Runnels County

WATER

The property has four stock tanks spread across the property, providing ample water for livestock and wildlife. Additionally, a wet weather creek runs through the land.



948± Acres

Runnels County

WILDLIFE

The Quarry Creek Ranch wildlife includes deer, turkey, and other native species that thrive in the area.

VEGETATION/TERRAIN

The land features rolling terrain, with a combination of flat areas and gently sloping hills, providing scenic views and diverse land for various uses. The vegetation includes a mix of grasses, shrubs, and trees including mesquite trees, cedar trees, Agarita, patches of cactus, and sotol which contribute to the natural landscape and provide cover for wildlife.



948± Acres
Runnels County



TAXES

\$3,138,46 (2024)

MINERALS

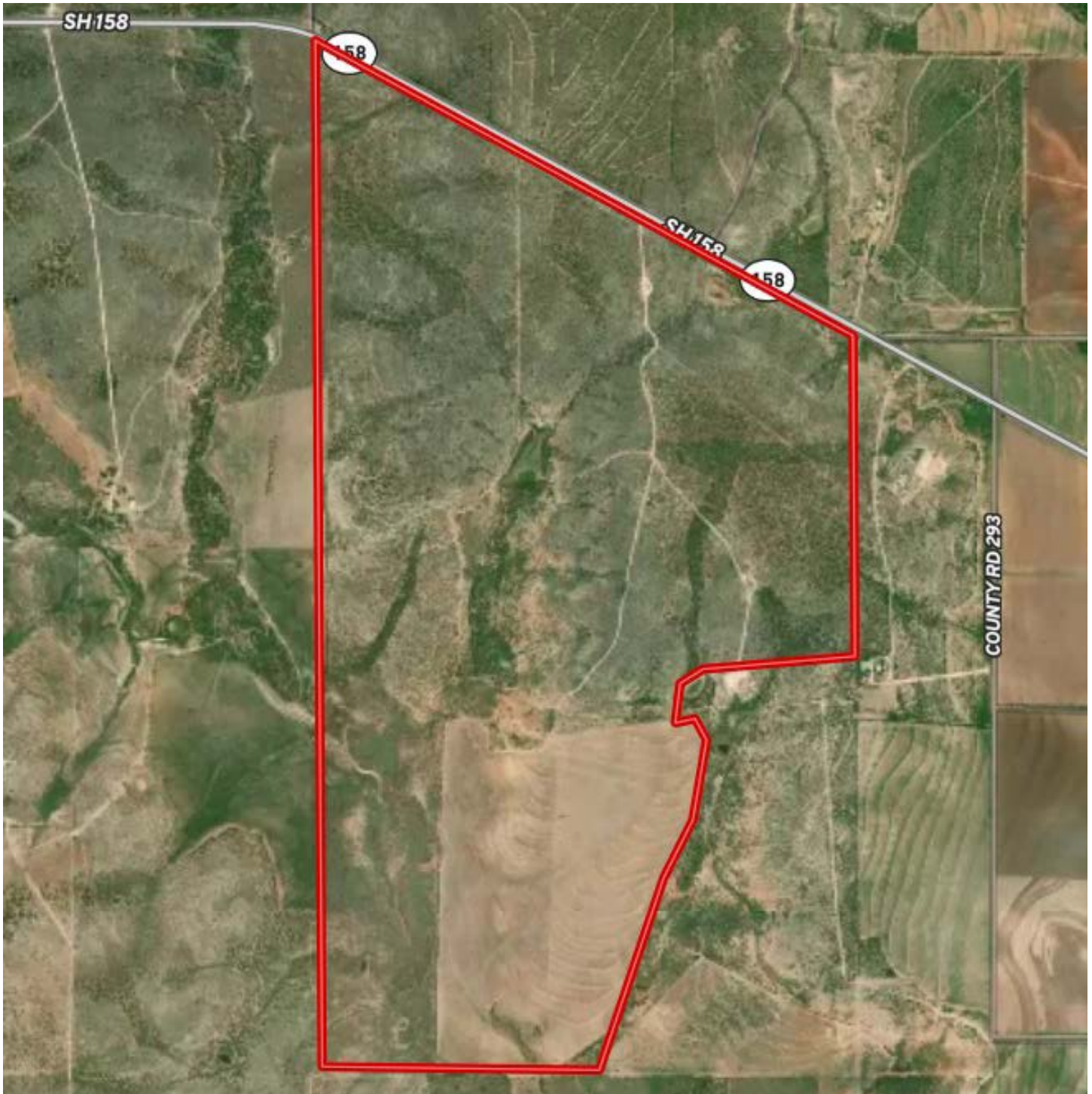
Negotiable



948± Acres
Runnels County

MAP

[Click here to view map](#)



948± Acres
Runnels County



**948± ACRES, RUNNELS CO
STATE HWY 158
BALLINGER, TX 76821**

Quarry Creek Ranch is located 9± miles NW of Ballinger, TX, with Frontage of State Highway 158. The ranch is 39± miles NE of San Angelo, 62± miles SW of Abilene, and 203± miles SW of Fort Worth, TX.

Texas law requires all real estate licensees to give the following Information About Brokerage Services: trec.state.tx.us/pdf/contracts/OP-K.pdf

PROPERTY WEBSITE

[Click here to view website](#)

Robert Dullnig
Broker Associate of Dullnig Ranches

dullnigranches.com
Phone: 210.213.9700
Email: dullnigranches@gmail.com

6606 N. New Braunfels
San Antonio, Texas 78209

DR

DULLNIG
RANCH SALES

 Kuper | Sotheby's
INTERNATIONAL REALTY

Kuper Sotheby's International Realty is an RBFCU company © MMXVII Sotheby's International Realty Affiliates LLC. All Rights Reserved. Sotheby's International Realty Affiliates LLC fully supports the principles of the Fair Housing Act and the Equal Opportunity Act. Each Office is Independently Owned and Operated. Sotheby's International Realty and the Sotheby's International Realty logo are registered (or unregistered) service marks licensed to Sotheby's International Realty Affiliates LLC.