

308± ACRES
TALLAHATCHIE COUNTY, MS
\$797,720



SMALLTOWN
HUNTING PROPERTIES
& REAL ESTATESM

OFFICE (662) 846-1425 | WWW.SMALLTOWNPROPERTIES.COM

THE TALLAHATCHIE 308

PROPERTY PROFILE

LOCATION:

- Paul-Shady Grove Road
Cascilla, MS 38920
- Tallahatchie County
- 20± Miles NW of Grenada
- 57± Miles SW of Oxford

COORDINATES:

- 33.899027, -89.988559

PROPERTY USE:

- Recreational
- Hunting
- Timber Investment
- Potential Cabin/Home Site

PROPERTY INFORMATION:

- 308± Total Acres
- Five Established Food Plots
- Four Box Stands
- Mature Mixed Hardwoods
- Ascalmore Creek
- Multiple Ponds
- Utilities Available
- Deer, Turkey & Small Game
- Owner/Agent

TAX INFORMATION:

Total Taxes: \$1,130.16 for 2024

- Parcel 9533011: \$223.98
- Parcel 953300901: \$32.46
- Parcel 9501002050: \$873.72



SMALLTOWN
HUNTING PROPERTIES
& REAL ESTATESM

WILSON BRITT

LAND SPECIALIST

C: 662-299-2367

O: 662-846-1425

wilson@smalltownproperties.com

701 W. Sunflower Rd - Cleveland, MS 38732

smalltownproperties.com

Information is believed to be accurate but not guaranteed.

WELCOME TO THE TALLAHATCHIE 308

WELCOME TO THE TALLAHATCHIE 308, LOCATED NORTH OF CASCILLA, MS! Situated off Paul Shady Grove Road, this 308± acre property is a prime hunting destination. Conveniently located in the rolling hills of Tallahatchie County, this property is only 20 miles from Grenada, MS.

The habitat for a variety of wildlife is what makes this property very special. With food plots, mature trees, and thickets, plenty of bedding and nesting areas exist. Of the five food plots, four feature 6x6 box stands. Ascalmore Creek runs through the northeast side of the property, providing an excellent water source for all wildlife. This place is loaded with deer and turkey tracks, and ducks were also spotted.



SMALLTOWN
HUNTING PROPERTIES
& REAL ESTATESM

WILSON BRITT

LAND SPECIALIST

C: 662-299-2367

O: 662-846-1425

wilson@smalltownproperties.com

701 W. Sunflower Rd - Cleveland, MS 38732

smalltownproperties.com

Information is believed to be accurate but not guaranteed.

MORE ABOUT THE TALLAHATCHIE 308

Let's talk about future development! The natural lay of the land and existing internal road system enhance the possibilities for your future cabin or homesite. Community water is already connected, and utilities are available. A small shed currently exists at the entrance of the property, providing a great source for storage.

This wildlife-rich property could be at your back door, so don't miss your opportunity on the Tallahatchie 308.

Call Wilson Britt today for your private showing.

Owner/Agent



SMALLTOWN
HUNTING PROPERTIES
& REAL ESTATESM

WILSON BRITT

LAND SPECIALIST

C: 662-299-2367

O: 662-846-1425

wilson@smalltownproperties.com

701 W. Sunflower Rd - Cleveland, MS 38732

smalltownproperties.com

Information is believed to be accurate but not guaranteed.

308± ACRES

TALLAHATCHIE COUNTY, MISSISSIPPI



SMALLTOWN

HUNTING PROPERTIES
& REAL ESTATESM

WILSON BRITT

LAND SPECIALIST

C: 662-299-2367

O: 662-846-1425

wilson@smalltownproperties.com

701 W. Sunflower Rd - Cleveland, MS 38732

smalltownproperties.com

Information is believed to be accurate but not guaranteed.

308± ACRES

TALLAHATCHIE COUNTY, MISSISSIPPI



SMALLTOWN

HUNTING PROPERTIES
& REAL ESTATESM

WILSON BRITT

LAND SPECIALIST

C: 662-299-2367

O: 662-846-1425

wilson@smalltownproperties.com

701 W. Sunflower Rd - Cleveland, MS 38732

smalltownproperties.com

Information is believed to be accurate but not guaranteed.

308± ACRES

TALLAHATCHIE COUNTY, MISSISSIPPI



SMALLTOWN

HUNTING PROPERTIES
& REAL ESTATESM

WILSON BRITT

LAND SPECIALIST

C: 662-299-2367

O: 662-846-1425

wilson@smalltownproperties.com

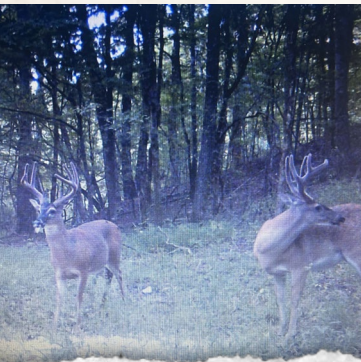
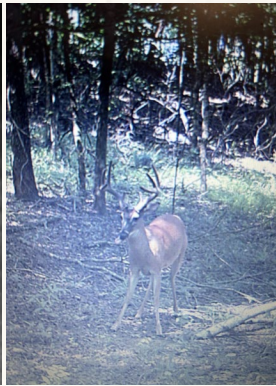
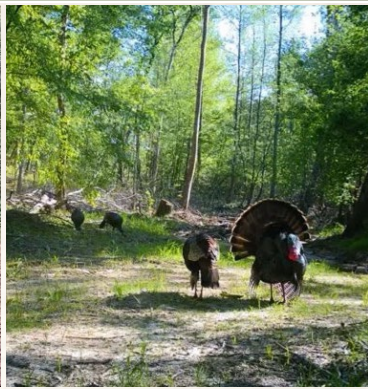
701 W. Sunflower Rd - Cleveland, MS 38732

smalltownproperties.com

Information is believed to be accurate but not guaranteed.

308± ACRES

TALLAHATCHIE COUNTY, MISSISSIPPI



SMALLTOWN

HUNTING PROPERTIES
& REAL ESTATESM

WILSON BRITT

LAND SPECIALIST

C: 662-299-2367

O: 662-846-1425

wilson@smalltownproperties.com

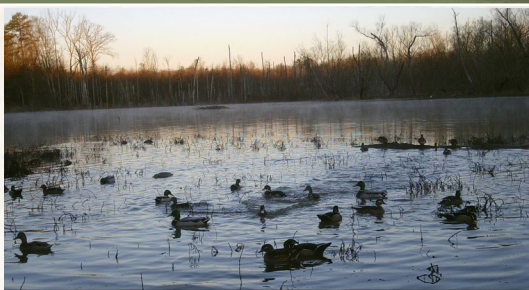
701 W. Sunflower Rd - Cleveland, MS 38732

smalltownproperties.com

Information is believed to be accurate but not guaranteed.

308± ACRES

TALLAHATCHIE COUNTY, MISSISSIPPI



SMALLTOWN
HUNTING PROPERTIES
& REAL ESTATESM

WILSON BRITT

LAND SPECIALIST

C: 662-299-2367

O: 662-846-1425

wilson@smalltownproperties.com

701 W. Sunflower Rd - Cleveland, MS 38732

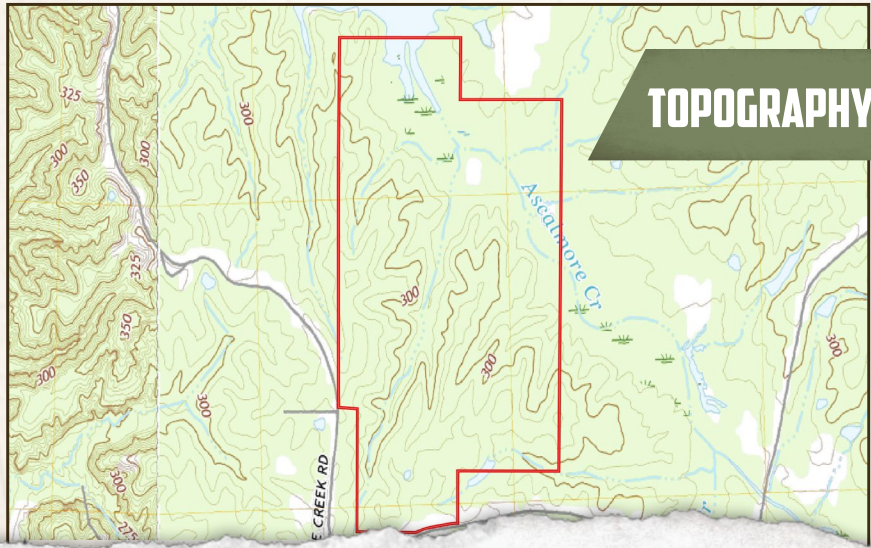
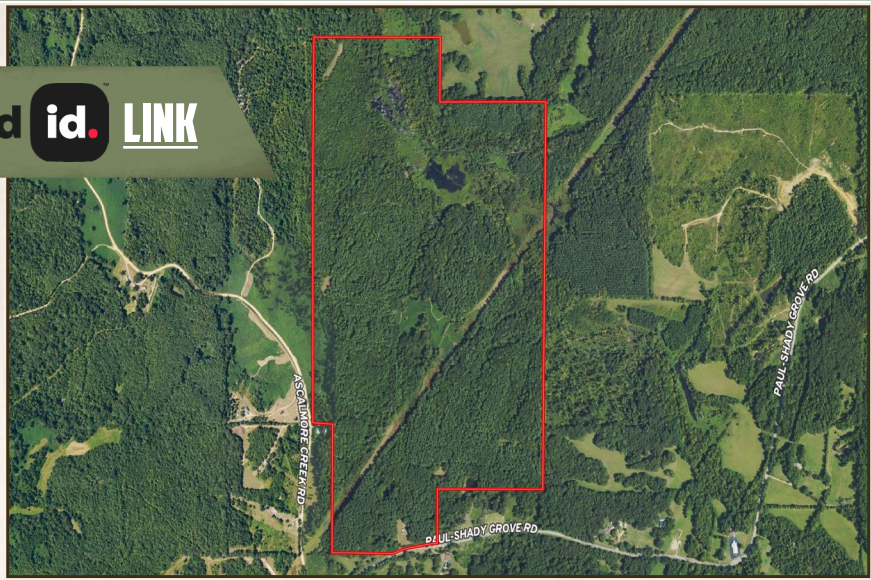
smalltownproperties.com

Information is believed to be accurate but not guaranteed.

308± ACRES

TALLAHATCHIE COUNTY, MISSISSIPPI

land id. LINK



SMALLTOWN
 HUNTING PROPERTIES
 & REAL ESTATESM

WILSON BRITT

LAND SPECIALIST

C: 662-299-2367

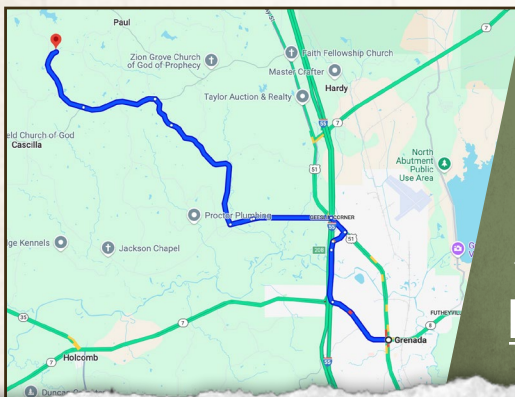
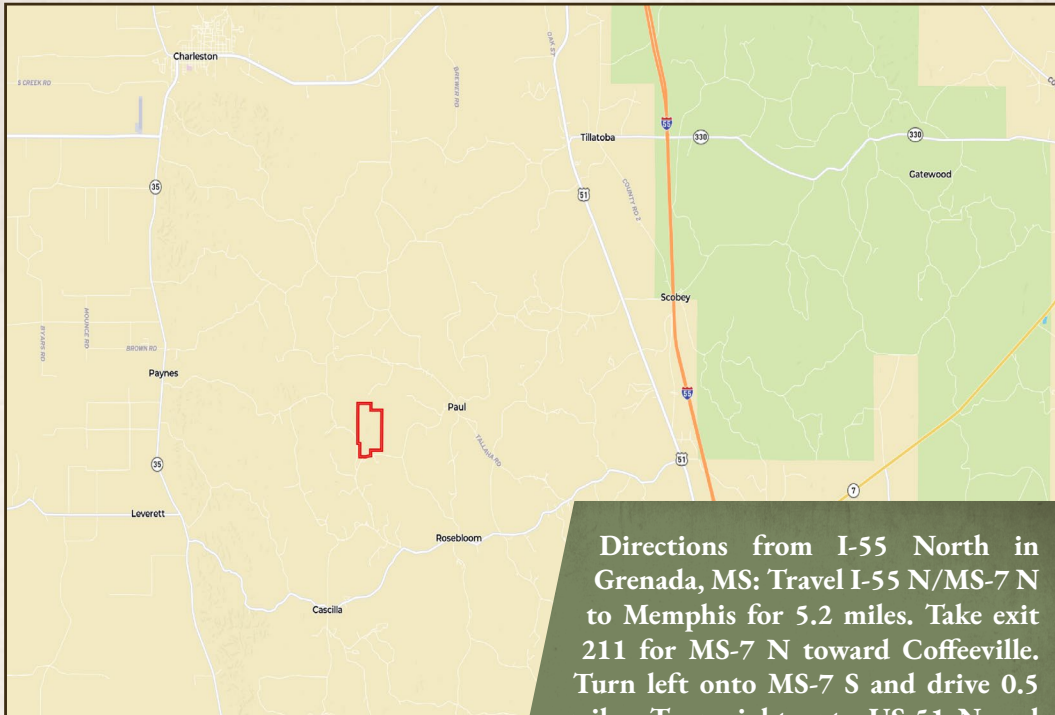
O: 662-846-1425

wilson@smalltownproperties.com

701 W. Sunflower Rd - Cleveland, MS 38732

smalltownproperties.com

Information is believed to be accurate but not guaranteed.



Directions from I-55 North in Grenada, MS: Travel I-55 N/MS-7 N to Memphis for 5.2 miles. Take exit 211 for MS-7 N toward Coffeerville. Turn left onto MS-7 S and drive 0.5 miles. Turn right onto US-51 N and proceed 2.8 miles. Take Strider Road to Paul-Shady Grove Road in Cascilla for 9.5 miles. Turn left onto Cascilla Road for 1.9 miles. Continue onto Strider Road for 2.9 miles. Continue onto Cascilla Rd for 2.4 miles. Continue straight onto Paul-Shady Grove Rd and the destination will be on the left.

LINK TO GOOGLE MAP DIRECTIONS



SMALLTOWN
HUNTING PROPERTIES
& REAL ESTATESM

WILSON BRITT
LAND SPECIALIST
C: 662-299-2367
O: 662-846-1425
wilson@smalltownproperties.com
701 W. Sunflower Rd - Cleveland, MS 38732
smalltownproperties.com