

Land | For Sale

XXX Ash Street,  
Belle Plaine, MN 56011

Yvonne Perkins

(612) 709-1555

yvonneperkins@edinarealty.com

**\$499,900**

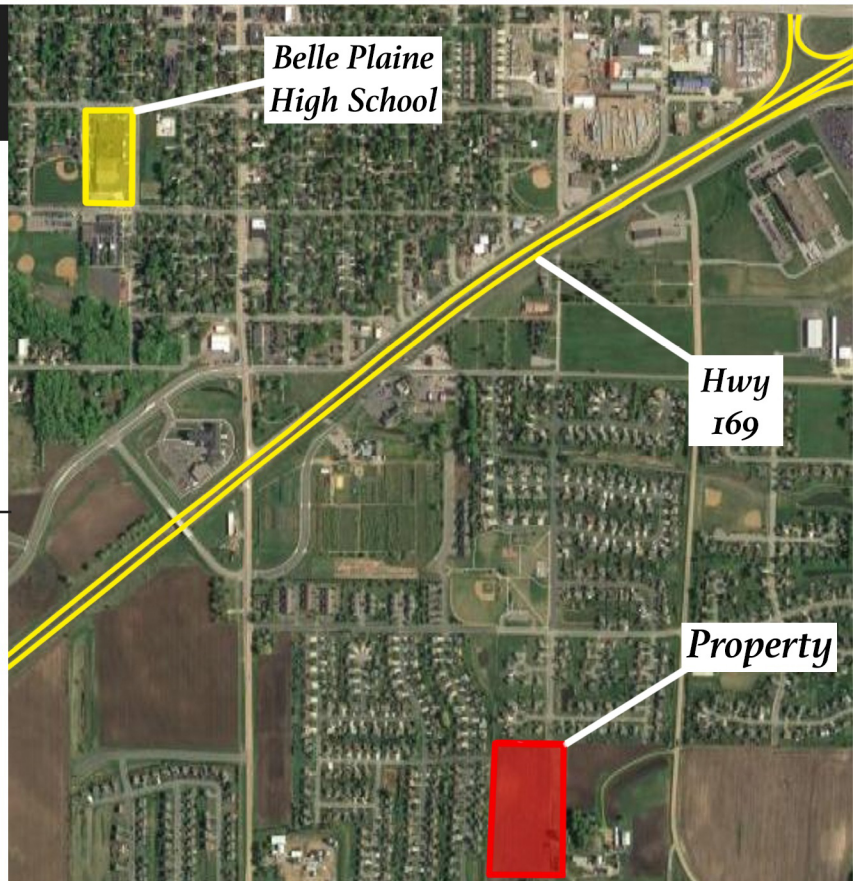


**12.85  
Acres**

## Property Highlights

Acreage:	12.85
County:	Scott
PID #:	010440020
School District:	#716 Belle Plaine
Zoning:	Single Family (Potential for higher density)

- Easy access to Hwy 169
- 1.7 miles away from Belle Plaine high school
- Water & Sewer available
- Survey & concept plan available



**The Boyd Perkins Group**

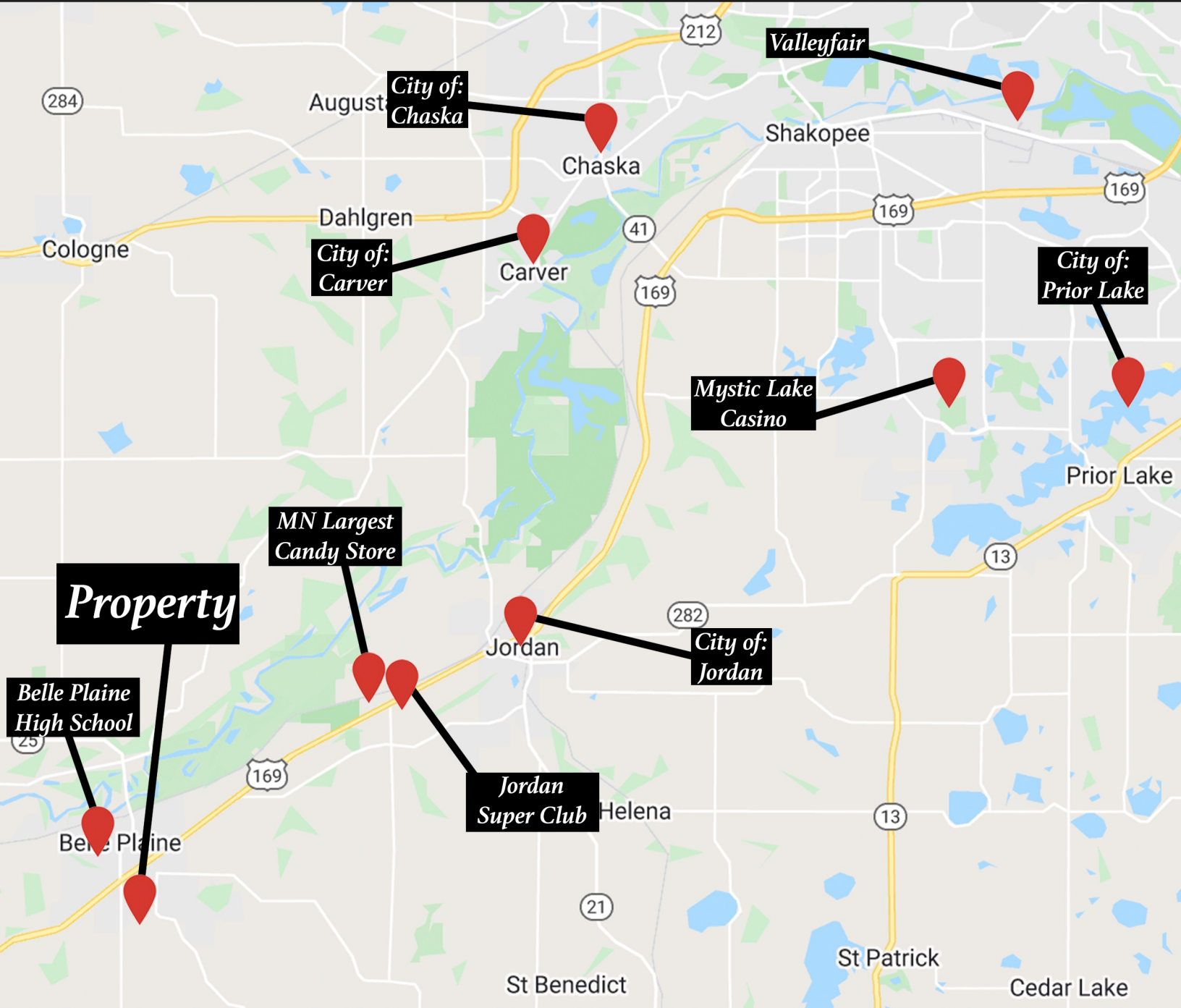
**Edina Realty**  
**Commercial**  
a Berkshire Hathaway affiliate



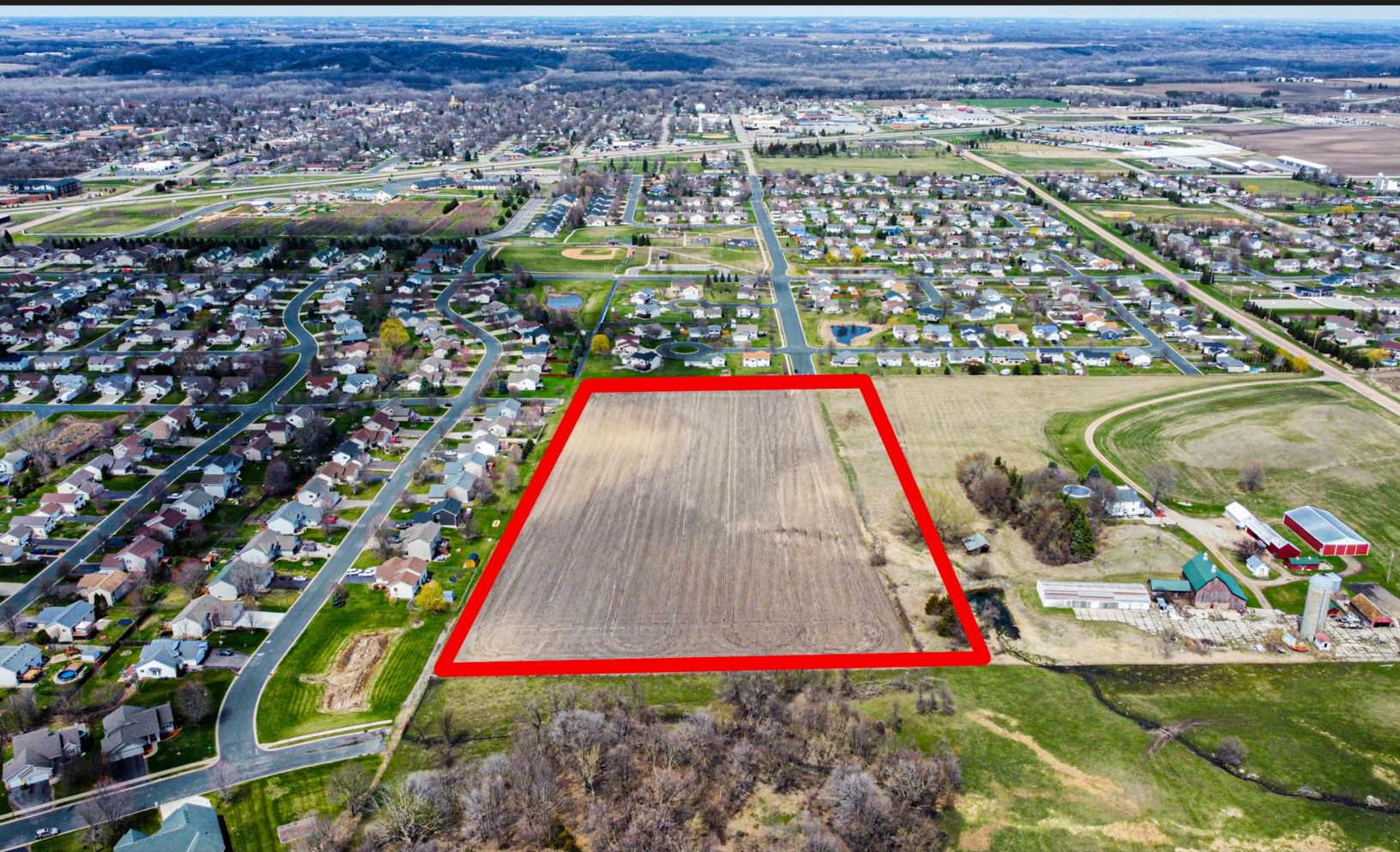
# Distance To:

- + Belle Plaine High School - 1.7 Miles
- + MN Candy Store - 6 Miles
- + Jordan Super Club - 6.4 Miles
- + Mystic Lake Casino - 21 Miles
- + Valley Fair - 23 Miles
- + MSP Airport - 44 Miles

- + Jordan - 9.2 Miles
- + Carver - 16 Miles
- + Chaska - 20 Miles
- + Prior Lake - 23 Miles
- + Saint Peter - 26 Miles







Yvonne Perkins

(612) 709-1555

[yvonneperkins@edinarealty.com](mailto:yvonneperkins@edinarealty.com)

**Edina Realty**  
**Commercial**  
a Berkshire Hathaway affiliate