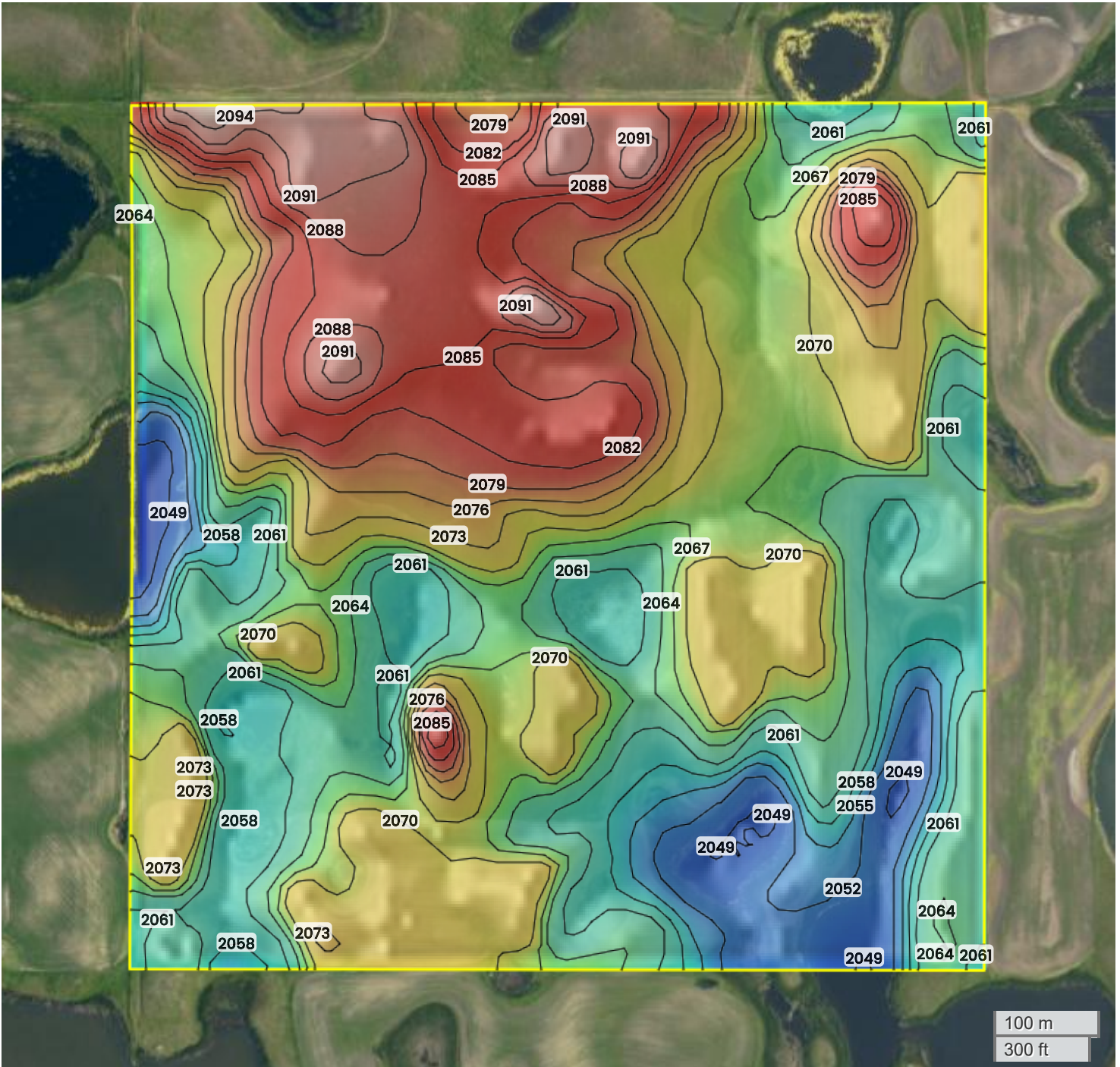




UNDEFINED FARM (159.84 AC TOTAL, 65.79 AC TILLABLE)

TOPOGRAPHY



2049 ft

2094 ft



Center: 46.352172, -99.178846

12-133N-68W

East Logan UT Township

Logan County, ND

Source: USGS 10m DEM

Interval(ft): 3

Max: 2094.0 ft

Min: 2049.0 ft

Range: 45.0 ft

Average: 2071.5 ft

FarmWorth, LLC makes no representations or warranties, express or implied, as to the accuracy of any information, data, numerical values, boundaries, or any other information generated through the use of FarmWorth.com. User is solely responsible for independently investigating and determining all information provided through FarmWorth.com prior to use and waives any and all claims against FarmWorth, LLC for any inaccuracies or inconsistencies in the information and/or data.

