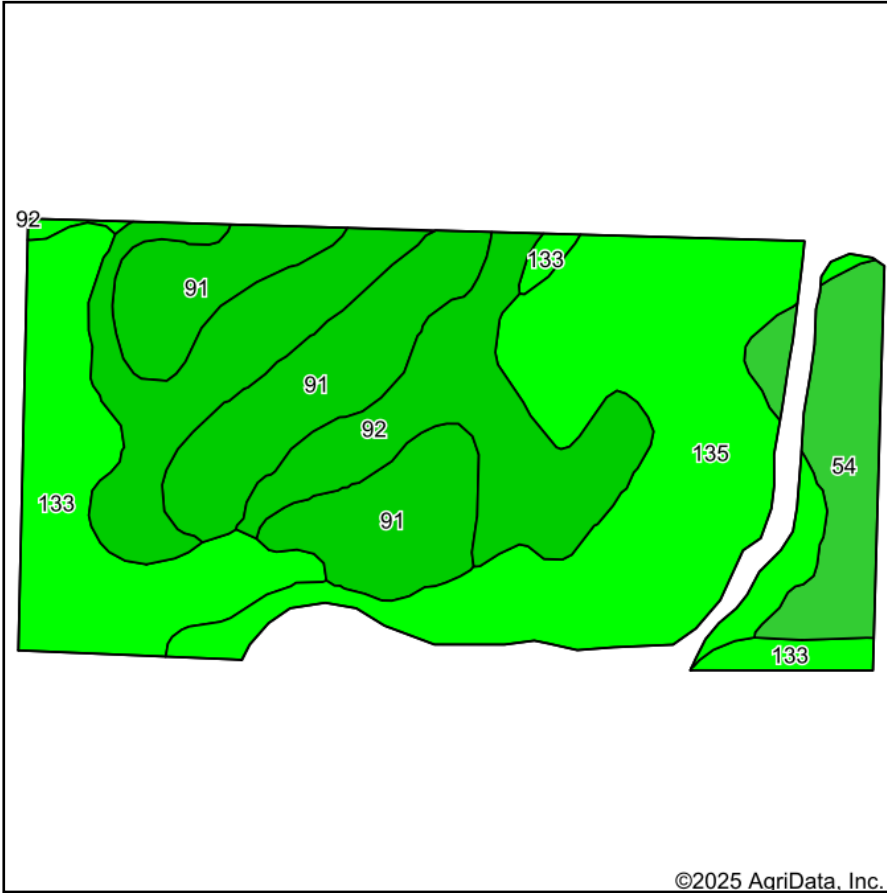
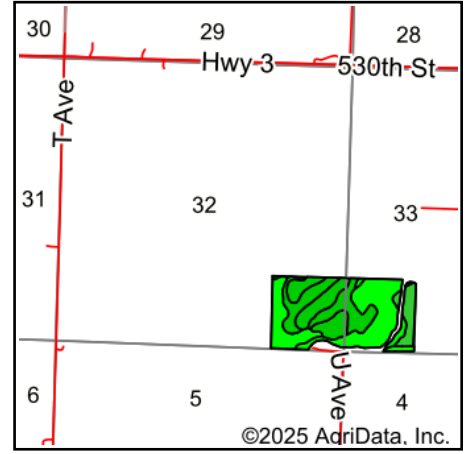


# Soils Map



Soils data provided by USDA and NRCS.









State: **Iowa**  
 County: **Cherokee**  
 Location: **32-92N-39W**  
 Township: **Afton**  
 Acres: **75.89**  
 Date: **2/3/2025**

**MIDWEST LAND** & REAL ESTATE, INC  
 712-262-3110 MANAGEMENT

Maps Provided By:  
  
 CUSTOMIZED ONLINE MAPPING  
 © AgriData, Inc. 2023 www.AgriDataInc.com



Area Symbol: IA035, Soil Area Version: 34

| Code                    | Soil Description  | Acres | Percent of field | CSR2 Legend   | Non-Irr Class *c | CSR2**      | CSR         |             |
|-------------------------|---|-------|------------------|---|------------------|-------------|-------------|-------------|
| 135                     | Coland clay loam, 0 to 2 percent slopes                                       | 23.23 | 30.6%            |  | IIw              | 74          | 74          |             |
| 92                      | Marcus silty clay loam, 0 to 2 percent slopes                                 | 17.78 | 23.4%            |  | IIw              | 94          | 76          |             |
| 91                      | Primghar silty clay loam, 0 to 2 percent slopes                               | 16.00 | 21.1%            |  | Iw               | 100         | 81          |             |
| 133                     | Colo silty clay loam, deep loess, 0 to 2 percent slopes, occasionally flooded | 12.20 | 16.1%            |  | IIw              | 78          | 74          |             |
| 54                      | Zook silty clay loam, 0 to 2 percent slopes, occasionally flooded             | 6.45  | 8.5%             |  | IIw              | 67          | 64          |             |
| 31                      | Afton silty clay loam, 0 to 2 percent slopes, occasionally flooded            | 0.23  | 0.3%             |  | IIw              | 80          | 73          |             |
| <b>Weighted Average</b> |   |       |                  |   |                  | <b>1.79</b> | <b>84.2</b> | <b>75.1</b> |

\*\*IA has updated the CSR values for each county to CSR2.

\*c: Using Capabilities Class Dominant Condition Aggregation Method

Soils data provided by USDA and NRCS.