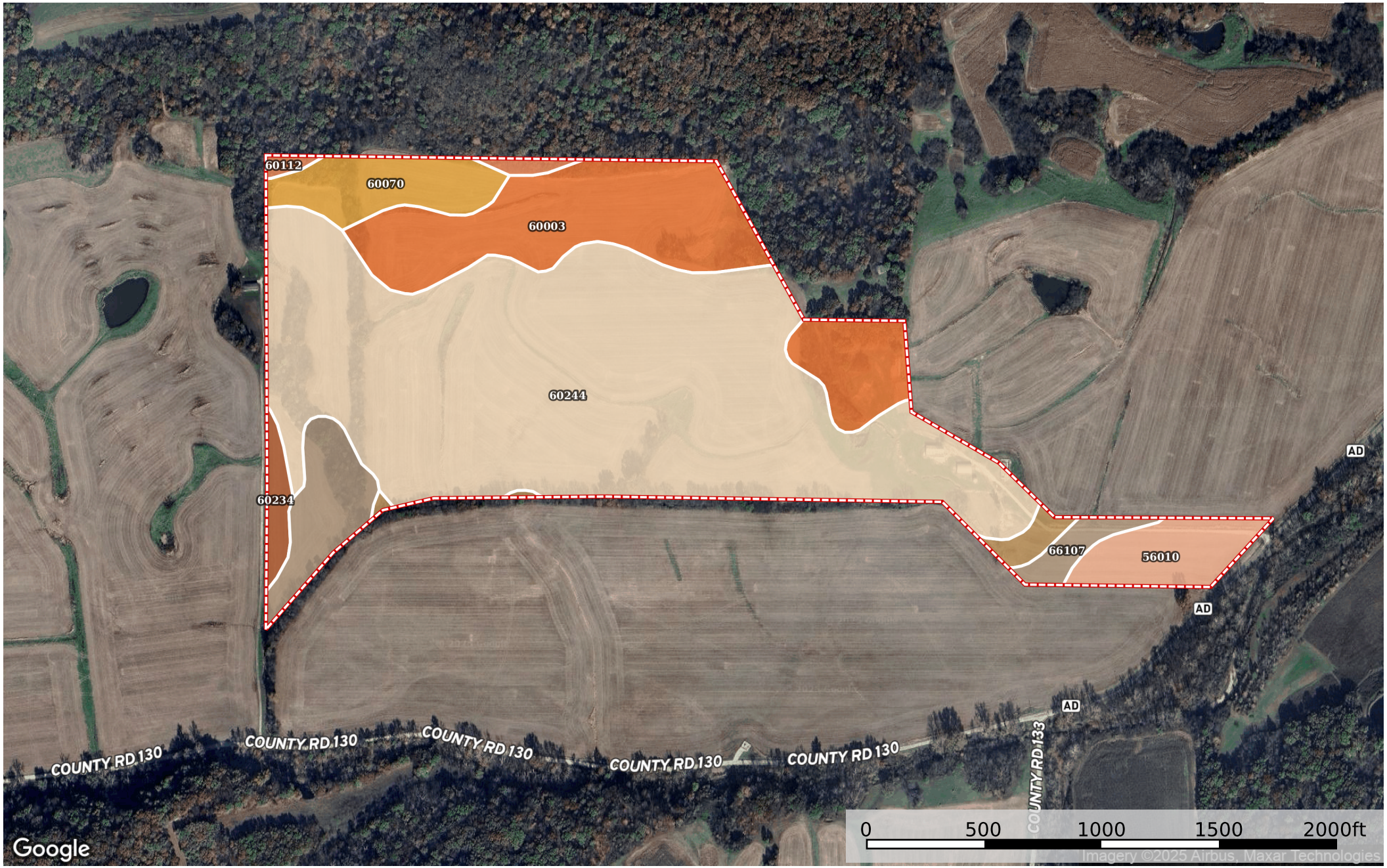


Pike 94.6
Missouri, AC +/-




Google

Imagery ©2025 Airbus, Maxar Technologies

 Boundary

Joe Ogden

 The information contained herein was obtained from sources deemed to be reliable. Land id™ Services makes no warranties or guarantees as to the completeness or accuracy thereof.

 Boundary 94.05 ac

SOIL CODE	SOIL DESCRIPTION	ACRES	%	CPI	NCCPI	CAP
60244	Winfield silt loam, 5 to 10 percent slopes, eroded	57.89	61.55	0	79	3e
60003	Menfro silt loam, 9 to 14 percent slopes, eroded	17.85	18.98	0	76	4e
66107	Tice silt loam, 0 to 2 percent slopes, occasionally flooded	5.82	6.19	0	73	2w
60070	Bucklick silt loam, 9 to 14 percent slopes	4.95	5.26	0	52	4e
56010	Belknap silt loam, 0 to 2 percent slopes, frequently flooded	4.11	4.37	0	67	3w
60234	Weller silt loam, 2 to 5 percent slopes	1.36	1.45	0	71	2e
56003	Twomile silt loam, 0 to 2 percent slopes, occasionally flooded	1.22	1.3	0	76	3w
60112	Goss very gravelly silt loam, 14 to 45 percent slopes	0.85	0.9	0	14	7e
TOTALS		94.05(*)	100%	-	75.37	3.2

(*) Total acres may differ in the second decimal compared to the sum of each acreage soil. This is due to a round error because we only show the acres of each soil with two decimal.

Capability Legend

Increased Limitations and Hazards

Decreased Adaptability and Freedom of Choice Users

Land, Capability

	1	2	3	4	5	6	7	8
'Wild Life'	•	•	•	•	•	•	•	•
Forestry	•	•	•	•	•	•	•	
Limited	•	•	•	•	•	•	•	
Moderate	•	•	•	•	•	•		
Intense	•	•	•	•	•			
Limited	•	•	•	•				
Moderate	•	•	•					
Intense	•	•						
Very Intense	•							

Grazing Cultivation

(c) climatic limitations (e) susceptibility to erosion

(s) soil limitations within the rooting zone (w) excess of water