

Persimmon Knob | 201 ± Acres



For Sale

\$643,200

About the Property

Discover your dream home location on this breathtaking 201± acre tract in Morgan County, AL. Nestled on the top of Gum Pond Road, this property offers unparalleled views that will captivate you from the moment you arrive. The property was clear cut this past year leaving a perfect blank canvas, whether you envision a sprawling estate, a cozy country retreat, or a modern masterpiece. There is over 5,500 feet of road frontage on Gum Pond Road and West Fork Cotaco Creek runs along the Northwest portion of the tract.

Don't miss this rare opportunity to own a piece of paradise in Morgan County. Contact us today for more information and to schedule a viewing.

Updated photos and videos to come later this spring

Facts and Features

Morgan County, Alabama

0 Gum Pond Road Eva, AL 35621

201 ± Acres

Best Use: Residential, Recreational, Farm

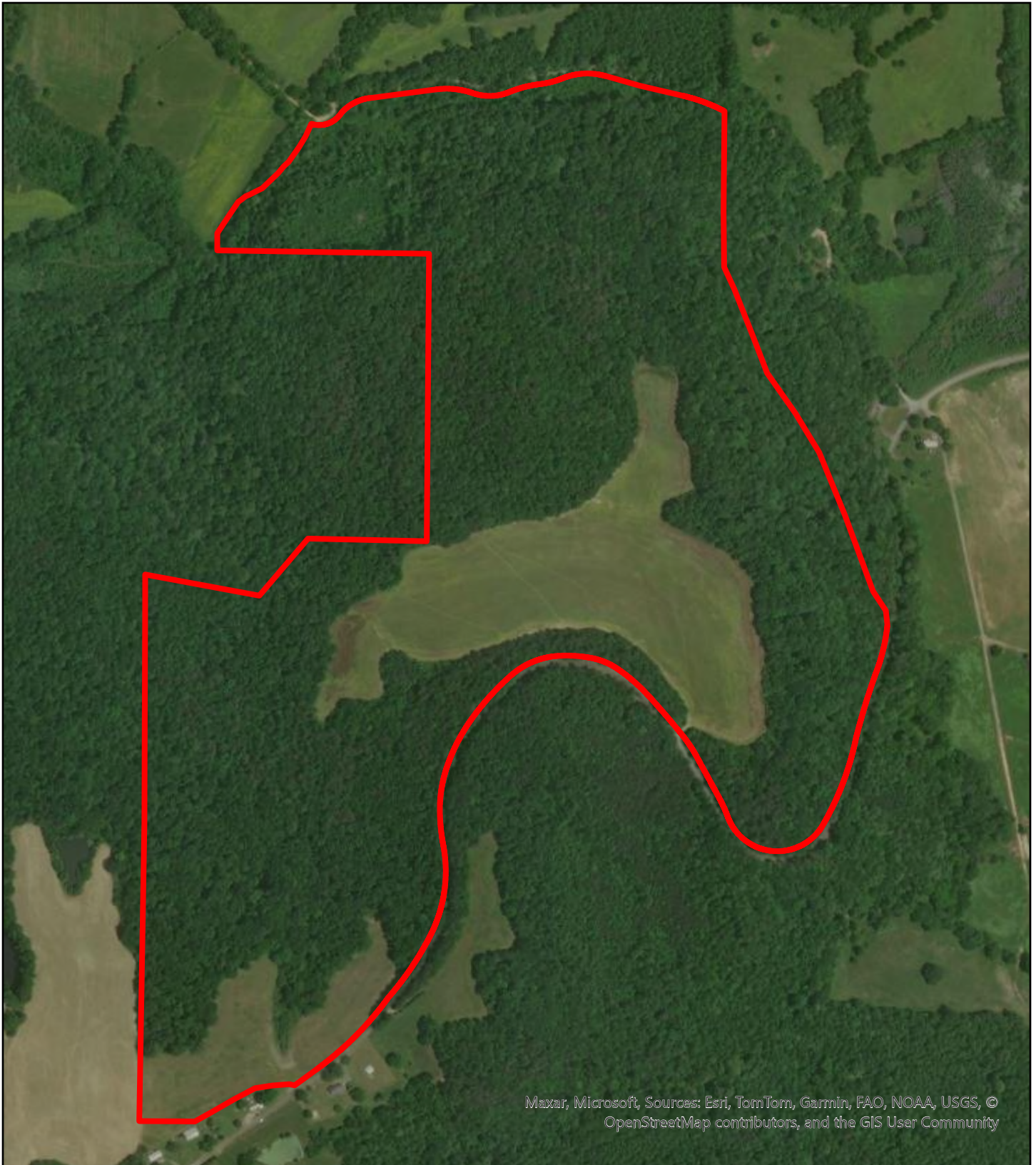


**SOUTH MAIN
LAND REALTY**

Hayden Reed

Office: (256) 383-8990 | Cell: (256) 740-2494
soldbyhayden@southmainrealty.com

Stephan Tomlinson, Broker



Maxar, Microsoft, Sources: Esri, TomTom, Garmin, FAO, NOAA, USGS, © OpenStreetMap contributors, and the GIS User Community

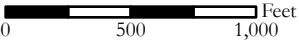
Legend

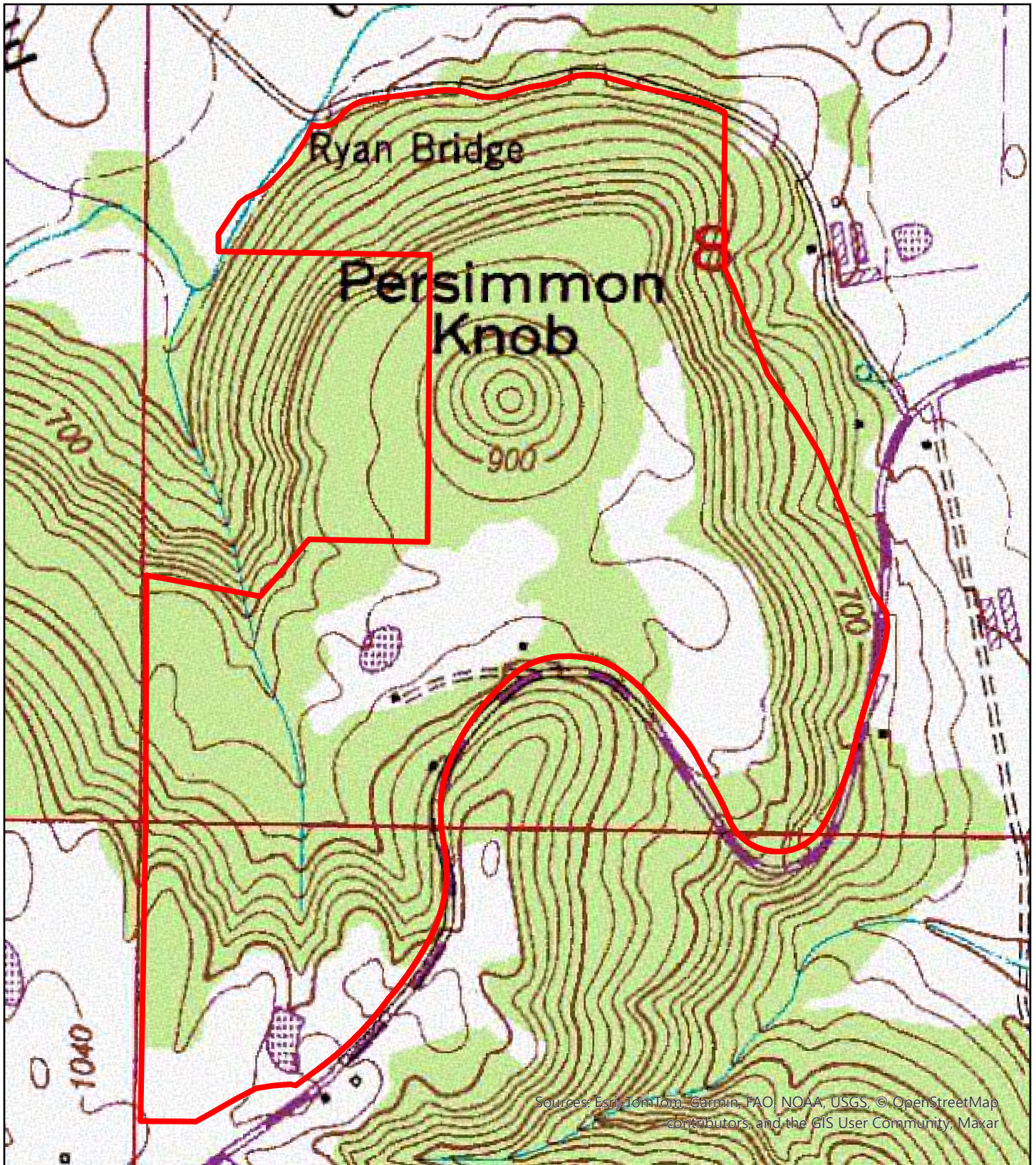
 MGT03

MGT03
Morgan County, AL
Aerial



South Main Land Realty | (256) 383-8990





Sources: Esri, TomTom, Garmin, FAO, NOAA, USGS, © OpenStreetMap contributors, and the GIS User Community, Maxar

Legend

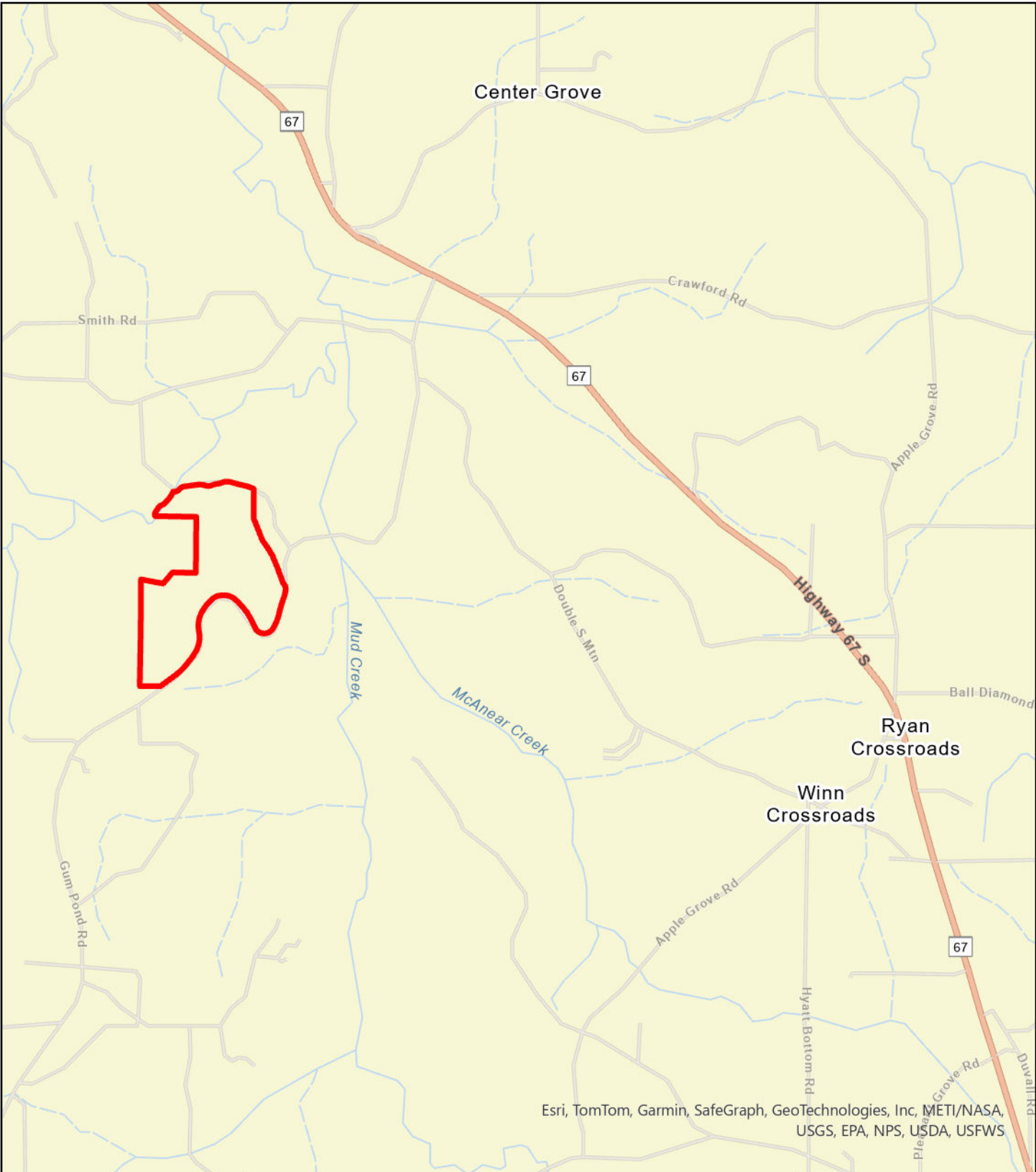
 MGT03

MGT03
Morgan County, AL
Topo

South Main Land Realty | (256) 383-8990



0 500 1,000 Feet



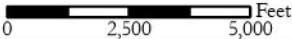
Esri, TomTom, Garmin, SafeGraph, GeoTechnologies, Inc, METI/NASA, USGS, EPA, NPS, USDA, USFWS

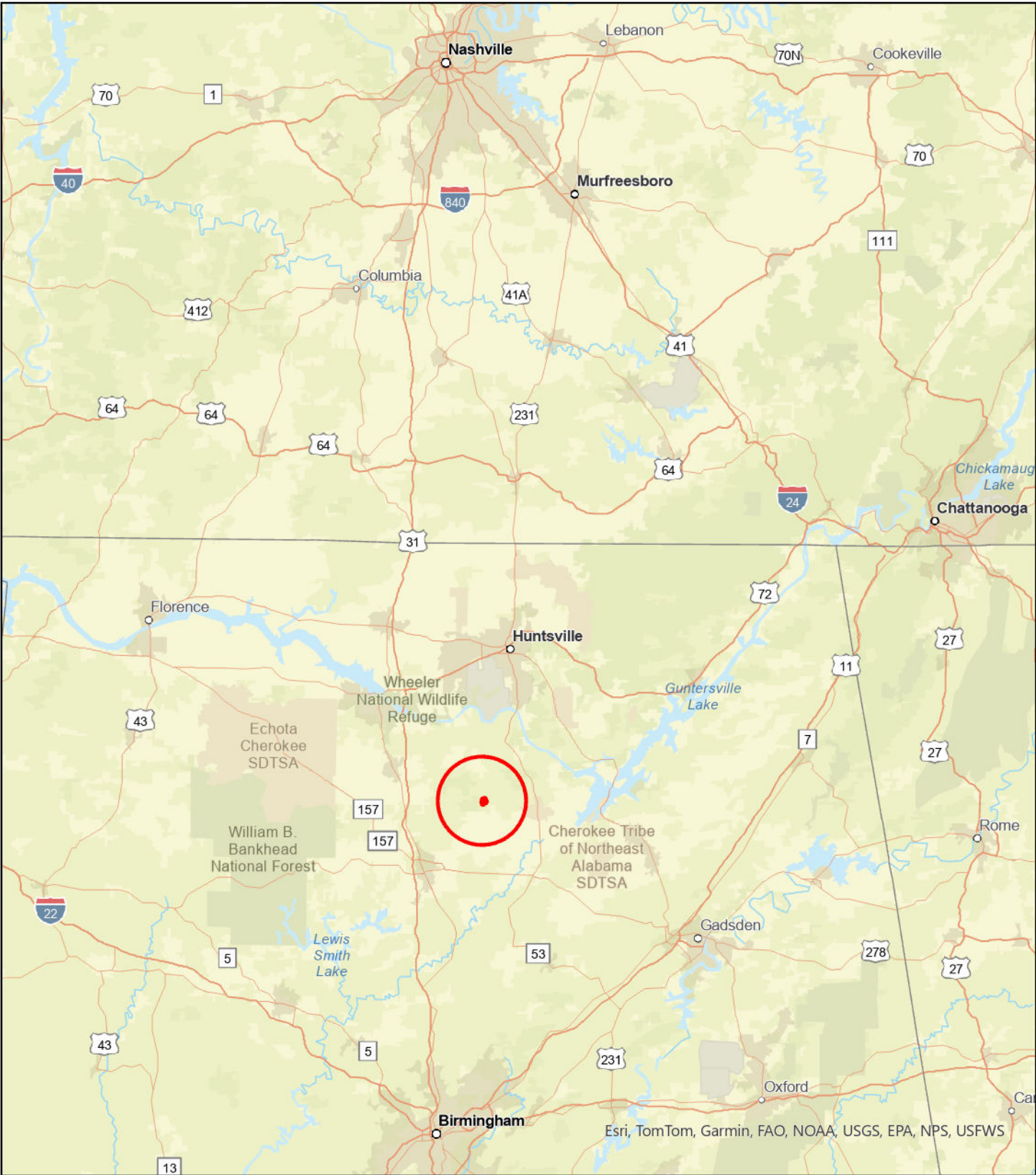
Legend

 MGT03

**MGT03
Morgan County, AL
Local Roads**

South Main Land Realty | (256) 383-8990





Legend

 MGT03

**MGT03
Morgan County, AL
General Location**

South Main Land Realty | (256) 383-8990

