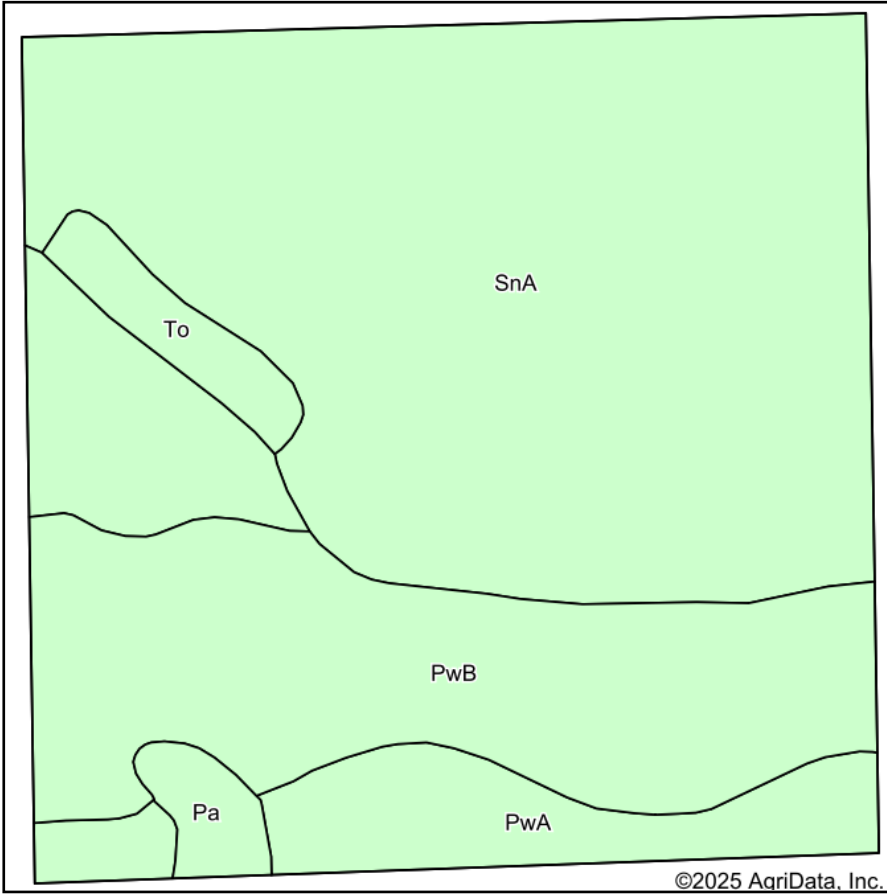
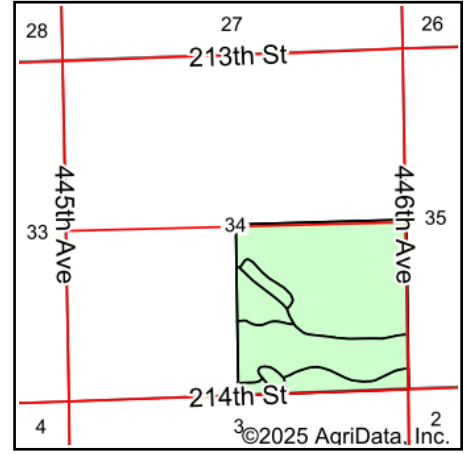


Soils Map



Soils data provided by USDA and NRCS.



State: **South Dakota**
 County: **Kingsbury**
 Location: **34-110N-54W**
 Township: **Spring Lake**
 Acres: **160.41**
 Date: **2/25/2025**

**BURLAGE
 PETERSON**
 Auctioneers & Realtors, LLC

Maps Provided By:



Area Symbol: SD077, Soil Area Version: 28

Code	Soil Description	Acres	Percent of field	Non-Irr Class	Productivity Index	*n NCCPI Overall
SnA	Sinai silty clay, 0 to 2 percent slopes	89.23	55.8%	Ils	81	50
PwB	Poinsett-Waubay silty clay loams, 1 to 6 percent slopes	40.01	24.9%	Ile	89	72
PwA	Poinsett-Waubay silty clay loams, 0 to 2 percent slopes	24.14	15.0%	Is	93	73
To	Tonka silty clay loam, 0 to 1 percent slopes	4.25	2.6%	IVw	58	29
Pa	Parnell silty clay loam	2.78	1.7%	Vw	34	14
Weighted Average				1.95	83.4	*n 57.8

*n: The aggregation method is "Weighted Average using all components"