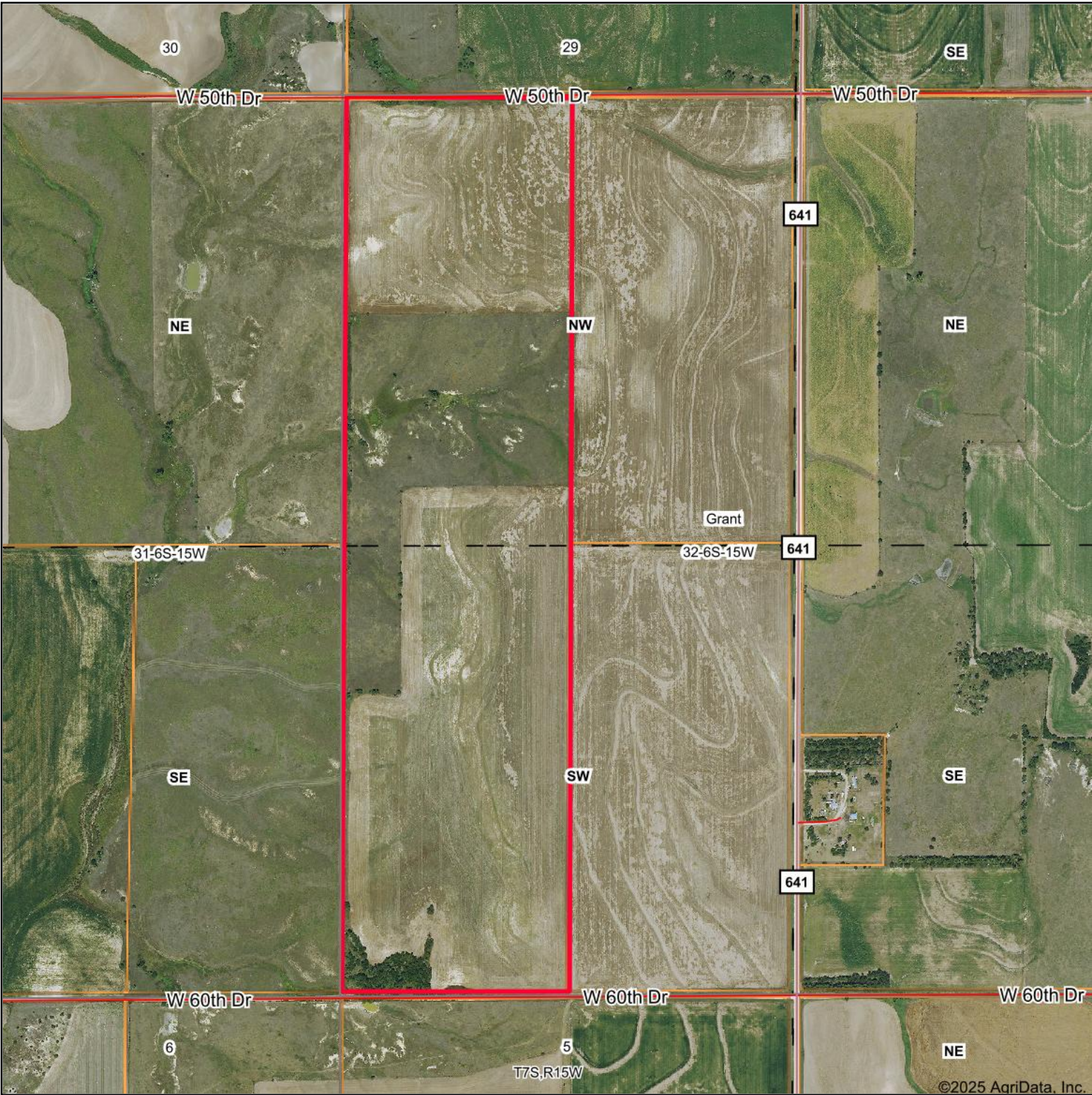
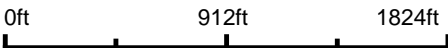


# Aerial Map



Boundary Center: 39° 29' 16.5, -99° 1' 29.49



**32-6S-15W**  
**Osborne County**  
**Kansas**



Maps Provided By:  
  
CUSTOMIZED ONLINE MAPPING  
© AgriData, Inc. 2023 www.AgriDataInc.com

3/1/2025