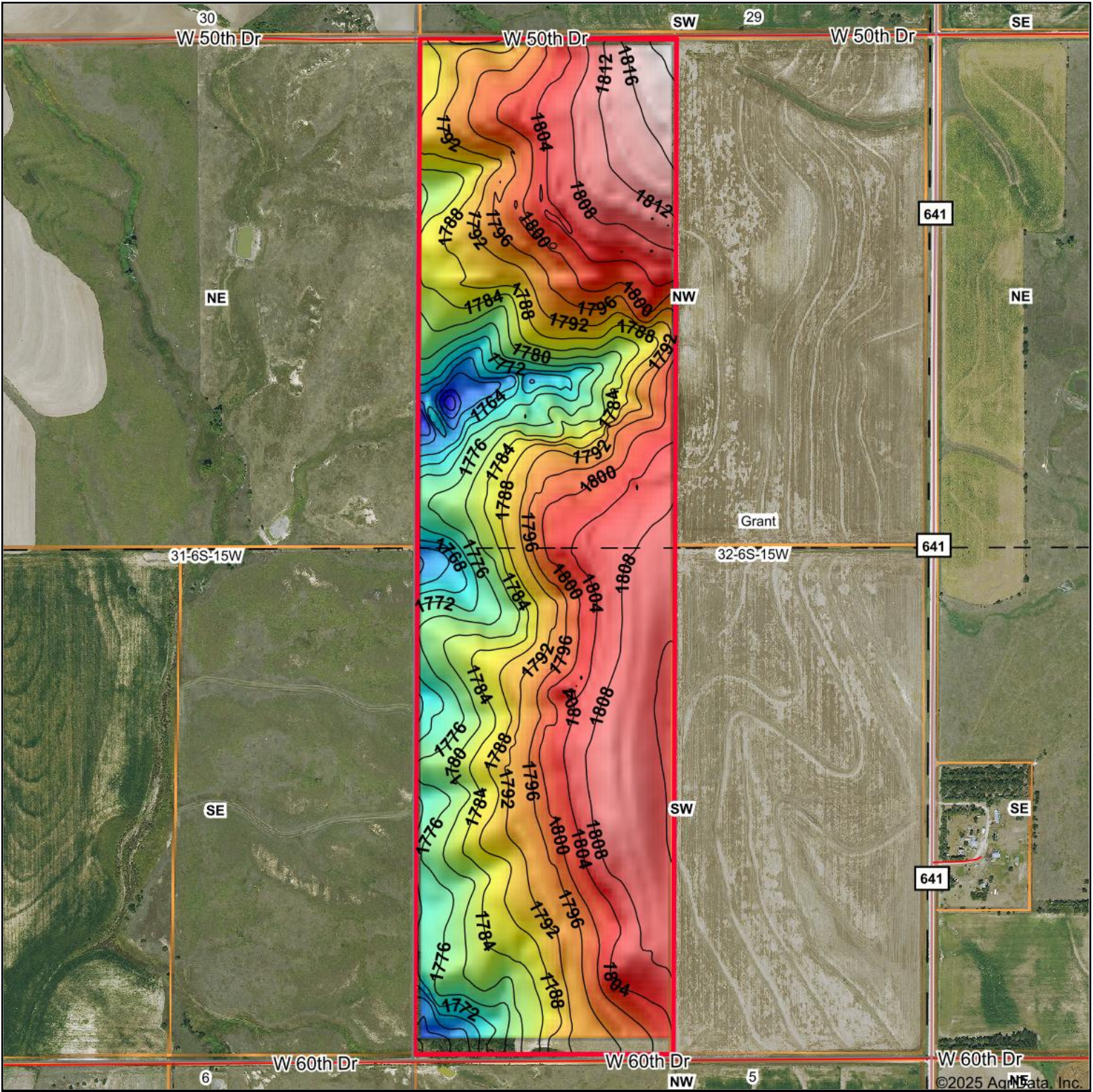

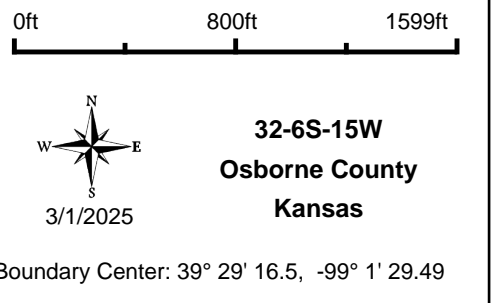


Topography Hillshade



<p>Low Elevation High</p> 	<p>Source: USGS 10 meter dem Interval(ft): 4 Min: 1,747.5 Max: 1,820.7 Range: 73.2 Average: 1,791.1 Standard Deviation: 14.34 ft</p>	<p>0ft 800ft 1599ft</p>  <p>32-6S-15W Osborne County Kansas 3/1/2025 Boundary Center: 39° 29' 16.5, -99° 1' 29.49</p>
--	--	--

AMERICAN LEGACY LAND CO

Maps Provided By:



© AgriData, Inc. 2023

www.AgriDataInc.com