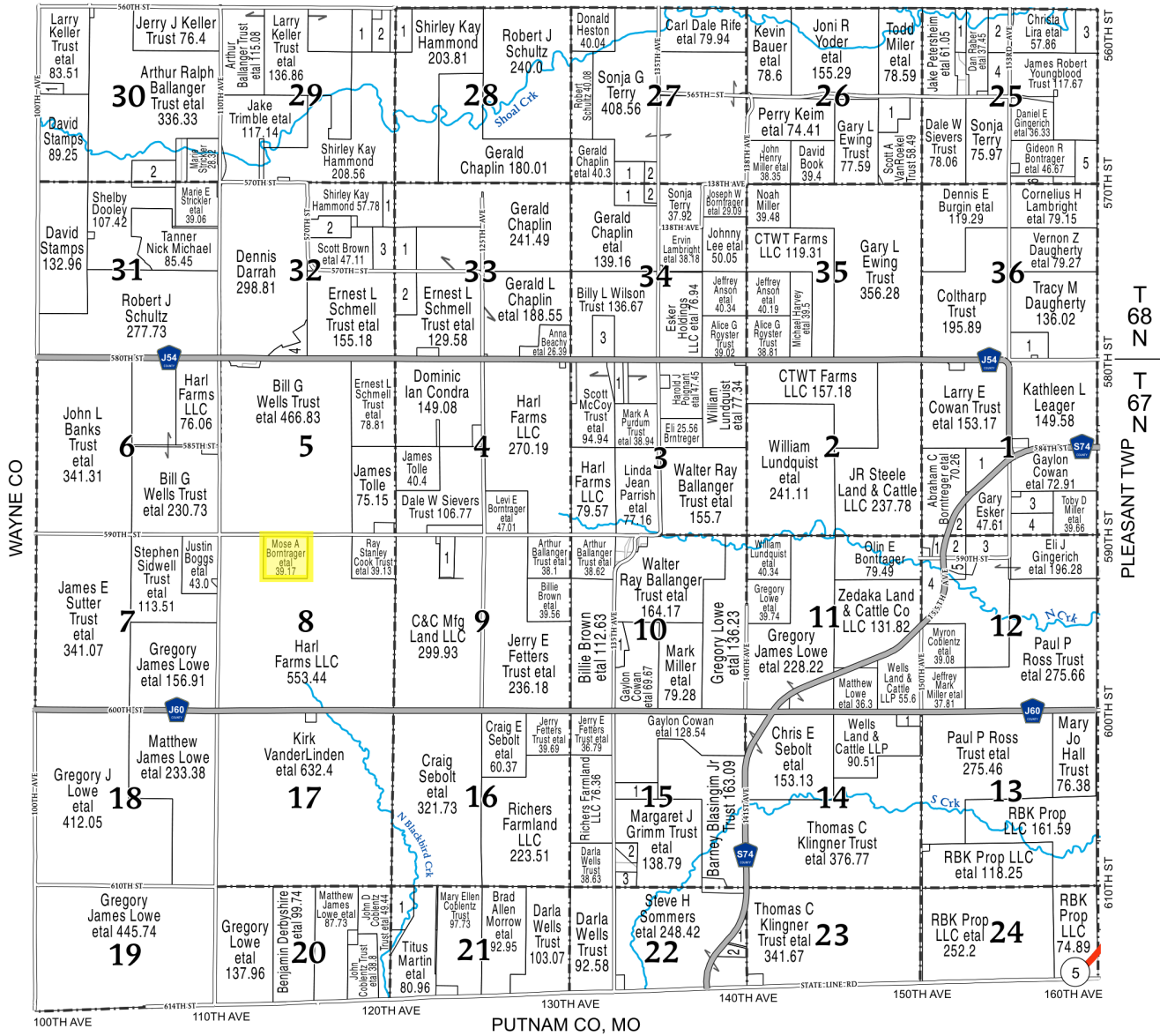


(Landowners)
LINCOLN TWP



FRANKLIN TOWNSHIP

SECTION	LANDOWNER	ACREAGE
SECTION 1	1 YODER, JACOB E ETAL	25.98
	2 GINGERICH LE, ELI ETAL	6.98
	3 MILLER, MELVIN A ETAL	18.22
	4 MILLER, MELVIN A ETAL	19.3
SECTION 3	1 KIMM, JONATHAN	7.73
SECTION 9	1 ASLESEN, RUSS ETAL	12.44
SECTION 10	1 SHERRICK, JOSHUA	9.39
SECTION 12	1 BONTRAGER, OLIN E	5.94
	2 GINGERICH LE, ELI ETAL	8.49
	3 ESKER, GARY	18.85
	4 BONTRAGER, ABRAHAM C ETAL	21.08
5 GINGERICH, ELI ETAL	5.47	
SECTION 14	1 LEE, DAVID ETAL	6.25
SECTION 15	1 SHERRICK, JOSHUA JOE	14.53
	2 PARKER, JANETTE ETAL	6.52
	3 TIEDEN, MYLINDA ETAL	6.64
SECTION 21	1 COBLENTZ TRUST, JOHN D ETAL	20.71
SECTION 22	1 SOMMERS, HENRY R ETAL	6.04
	2 BLADES, LONDON ETAL	6
SECTION 25	1 MILLER, JOHN W ETAL	10.07
	2 SHROCK, REUBEN J ETAL	19.14
	3 STICKLER JR, GARY	19.81
	4 RABER, DAN ETAL	18.42
	5 DAUGHERTY, VERNON Z ETAL	19.96
	6 LAMBRIGHT, CORNELIUS H ETAL	6.66
SECTION 26	1 SHETLER, LEVI E ETAL	19.73
SECTION 27	1 PETRACK, SHIRLEY A	13.76
	2 BONTRAGER, HARLEY I ETAL	5.93

SECTION	LANDOWNER	ACREAGE
SECTION 28	1 STICKLER, REBECCA ROSE	14.79
SECTION 29	1 EXLINE, DONALD D ETAL	17.78
	2 LEWIS, CAROL J	14.22
SECTION 30	1 SULSER, DAVID A ETAL	5.47
	2 DOOLEY, SHELBY	20.01
SECTION 32	1 CHAPLIN, GERALD	10.39
	2 BUTLER, MICHAEL ETAL	18.56
	3 CHAPLIN, GERALD L	19.3
	4 HOSTETLER, MENNO W ETAL	12.73
SECTION 33	1 CHAPLIN, GERALD L	19.62
	2 SCHMELL TRUST, ERNEST L ETAL	19.48
SECTION 34	1 PETRACK, SHIRLEY A	14.44
	2 BONTRAGER, HARLEY I ETAL	5.17
	3 BEACHY, ANNA ETAL	19.43
SECTION 36	1 GRAY, ANNA LILLIAN ETAL	20.16

