

48± ACRES
WAYNE COUNTY, MS
\$189,500



SMALLTOWN
HUNTING PROPERTIES
& REAL ESTATESM

OFFICE (769) 760-0005

THE WAYNE 48

PROPERTY PROFILE

LOCATION:

- Highway 45
State Line, MS 30362
- Wayne County
- 8± Miles S of Buckatunna
- 16± Miles S of Waynesboro
- 63± Miles N of Mobile

COORDINATES:

- 31.4622, -88.46817

TAX INFORMATION:

- Estimated Taxes \$165

PROPERTY USE:

- Timber Investment
- Hunting

PROPERTY INFORMATION:

- 48± Acres
- 35± Year-Old Pine Plantation
- Scattered Hardwoods
- Paved Road Frontage



TRESTON COCHRAN | LAND SPECIALIST
C: 601-410-5702 | treston@smalltownproperties.com

HUNTER WADLEY | LAND SPECIALIST
C: 601-410-1992 | hunter.wadley@smalltownproperties.com

2121 5th St., Ste 206 - Meridian, MS 39301 | O: 769-760-0005 | smalltownproperties.com Information is believed to be accurate but not guaranteed.

WELCOME TO THE WAYNE 48

ARE YOU LOOKING FOR A TIMBER INVESTMENT WITH THE POTENTIAL OF AN IMMEDIATE RETURN? Welcome to the Wayne 48, located off Highway 45 approximately 16 miles south of Waynesboro, MS, and roughly eight miles south of Buckatunna. This 48± acre Wayne County tract is nestled in the heart of the Pine Belt, boasting a 35± year-old pine plantation. The timber stand is ready for harvest, which covers the vast majority of the property with scattered hardwoods in the low-lying areas. The Wayne 48 could be developed to fit your wants and needs as a clean slate after harvesting timber. With frontage on Highway 45, this tract offers quick access for hunting while also watching your investment grow.

**Contact Hunter Wadley or Treston Cochran
to set up a showing today.**



TRESTON COCHRAN | LAND SPECIALIST
C: 601-410-5702 | treston@smalltownproperties.com

HUNTER WADLEY | LAND SPECIALIST
C: 601-410-1992 | hunter.wadley@smalltownproperties.com

2121 5th St., Ste 206 - Meridian, MS 39301 | O: 769-760-0005 | smalltownproperties.com Information is believed to be accurate but not guaranteed.



TRESTON COCHRAN | LAND SPECIALIST
C: 601-410-5702 | treston@smalltownproperties.com

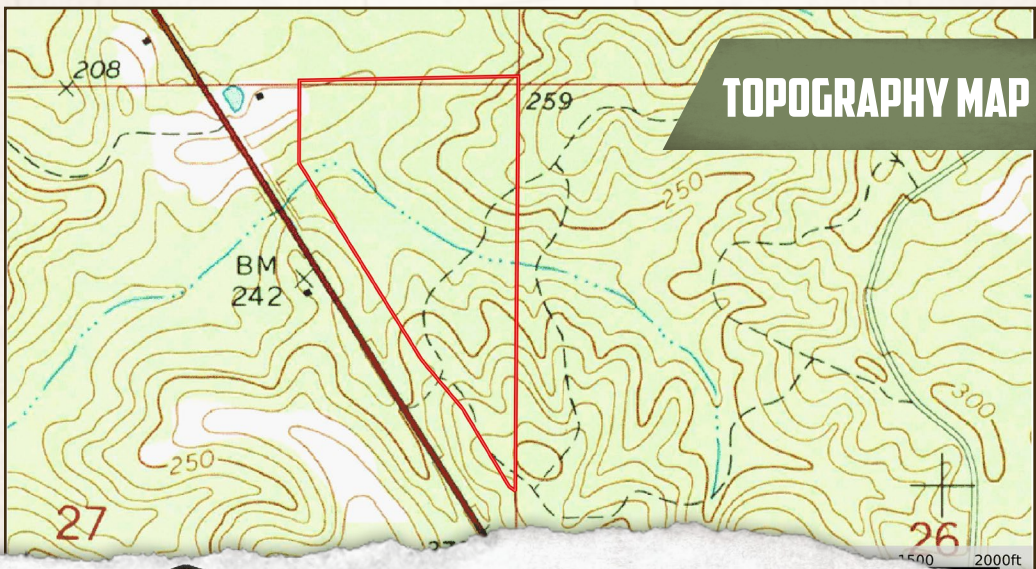
HUNTER WADLEY | LAND SPECIALIST
C: 601-410-1992 | hunter.wadley@smalltownproperties.com

48± ACRES

WAYNE COUNTY, MISSISSIPPI



land id. LINK



TOPOGRAPHY MAP



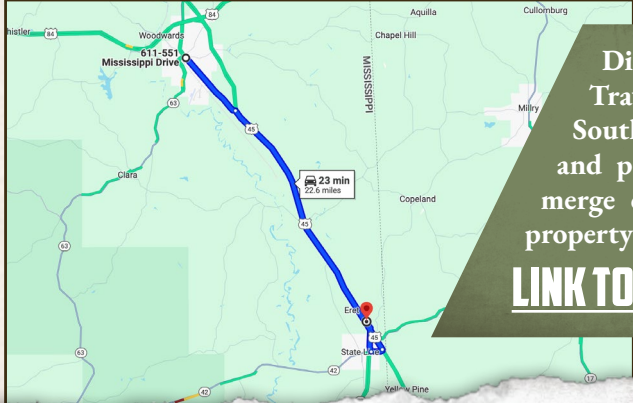
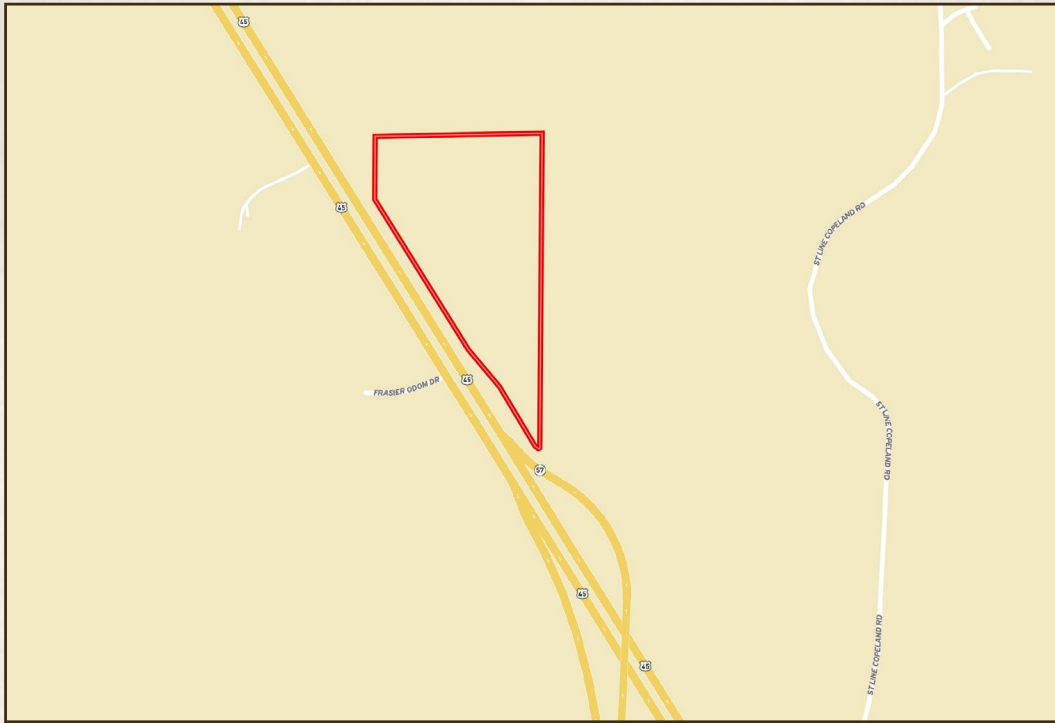
TRESTON COCHRAN | LAND SPECIALIST
C: 601-410-5702 | treston@smalltownproperties.com

HUNTER WADLEY | LAND SPECIALIST
C: 601-410-1992 | hunter.wadley@smalltownproperties.com

2121 5th St., Ste 206 - Meridian, MS 39301 | O: 769-760-0005 | smalltownproperties.com *Information is believed to be accurate but not guaranteed.*

48± ACRES

WAYNE COUNTY, MISSISSIPPI



Directions from Waynesboro, MS:
 Travel 16 miles south on US-45 South, then turn right on to MS-42 and proceed 0.7 miles. Turn right to merge onto MS-57N, in 1.9 miles the property will be on the right.

[LINK TO GOOGLE MAP DIRECTIONS](#)



TRESTON COCHRAN | LAND SPECIALIST
 C: 601-410-5702 | treston@smalltownproperties.com

HUNTER WADLEY | LAND SPECIALIST
 C: 601-410-1992 | hunter.wadley@smalltownproperties.com

2121 5th St., Ste 206 - Meridian, MS 39301 | O: 769-760-0005 | smalltownproperties.com *Information is believed to be accurate but not guaranteed.*