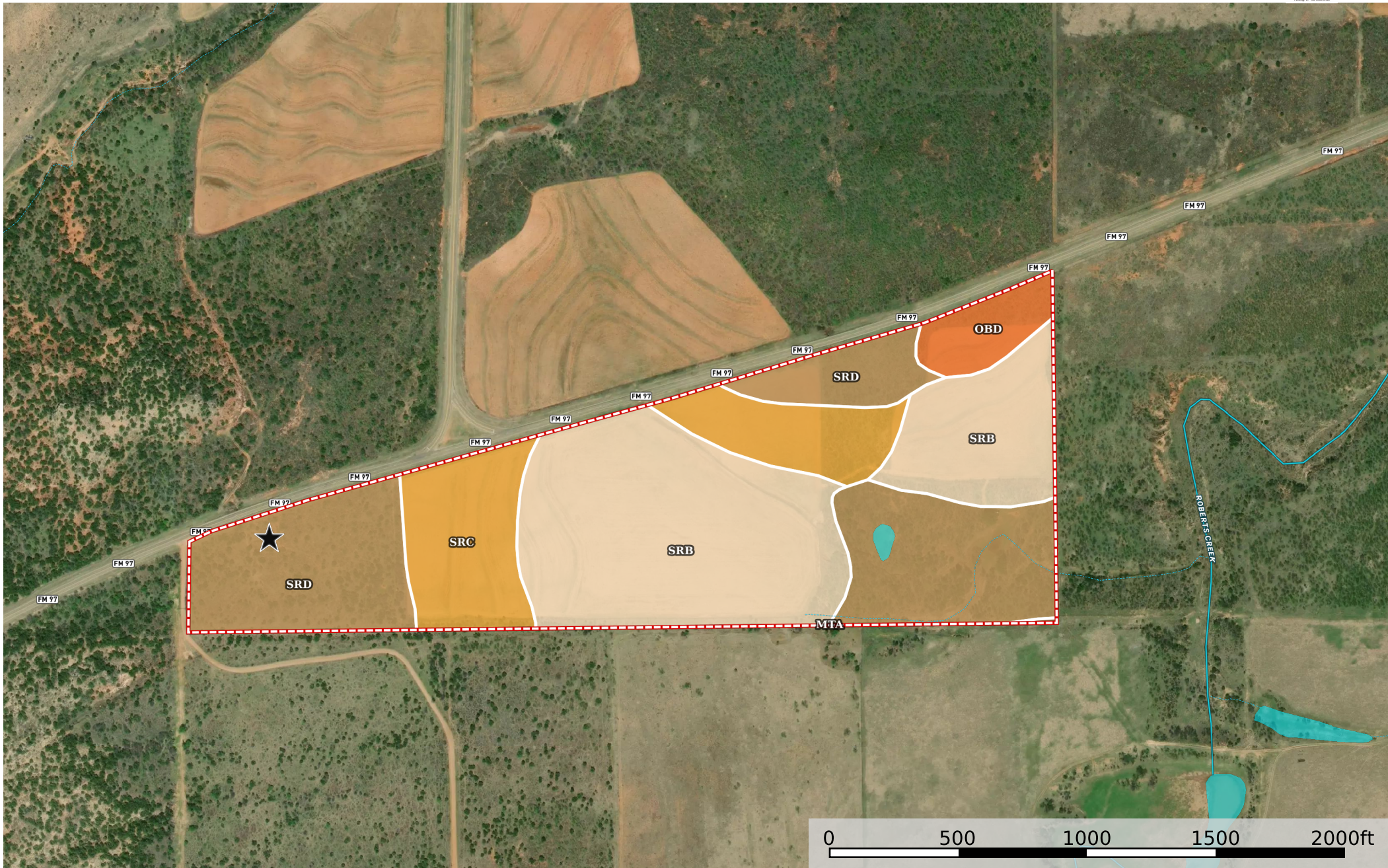


# Johnson Family 62+/- Acres

Floyd County, Texas, 62 AC +/-



- ★ Electric / Rv Hookup
- Boundary
- Stream, Intermittent
- River/Creek
- Water Body

Boundary 62.07 ac

SOIL CODE	SOIL DESCRIPTION	ACRES	%	CPI	NCCPI	CAP
SrB	Shrewder fine sandy loam, 1 to 3 percent slopes	26.55	42.77	0	42	2e
SrD	Shrewder fine sandy loam, 5 to 12 percent slopes	21.31	34.33	0	41	3e
SrC	Shrewder fine sandy loam, 3 to 5 percent slopes	11.44	18.43	0	41	3e
OBD	Obaro-Quinlan association, 5 to 12 percent slopes	2.72	4.38	0	31	6e
MtA	Motley loam, 0 to 1 percent slopes	0.05	0.08	0	52	2c
TOTALS		62.07(*)	100%	-	40.99	2.7

(\*) Total acres may differ in the second decimal compared to the sum of each acreage soil. This is due to a round error because we only show the acres of each soil with two decimal.

### Capability Legend

Increased Limitations and Hazards

Decreased Adaptability and Freedom of Choice Users

Land, Capability

	1	2	3	4	5	6	7	8
'Wild Life'	•	•	•	•	•	•	•	•
Forestry	•	•	•	•	•	•	•	
Limited	•	•	•	•	•	•	•	
Moderate	•	•	•	•	•	•		
Intense	•	•	•	•	•			
Limited	•	•	•	•				
Moderate	•	•	•					
Intense	•	•						
Very Intense	•							

### Grazing Cultivation

(c) climatic limitations (e) susceptibility to erosion

(s) soil limitations within the rooting zone (w) excess of water