

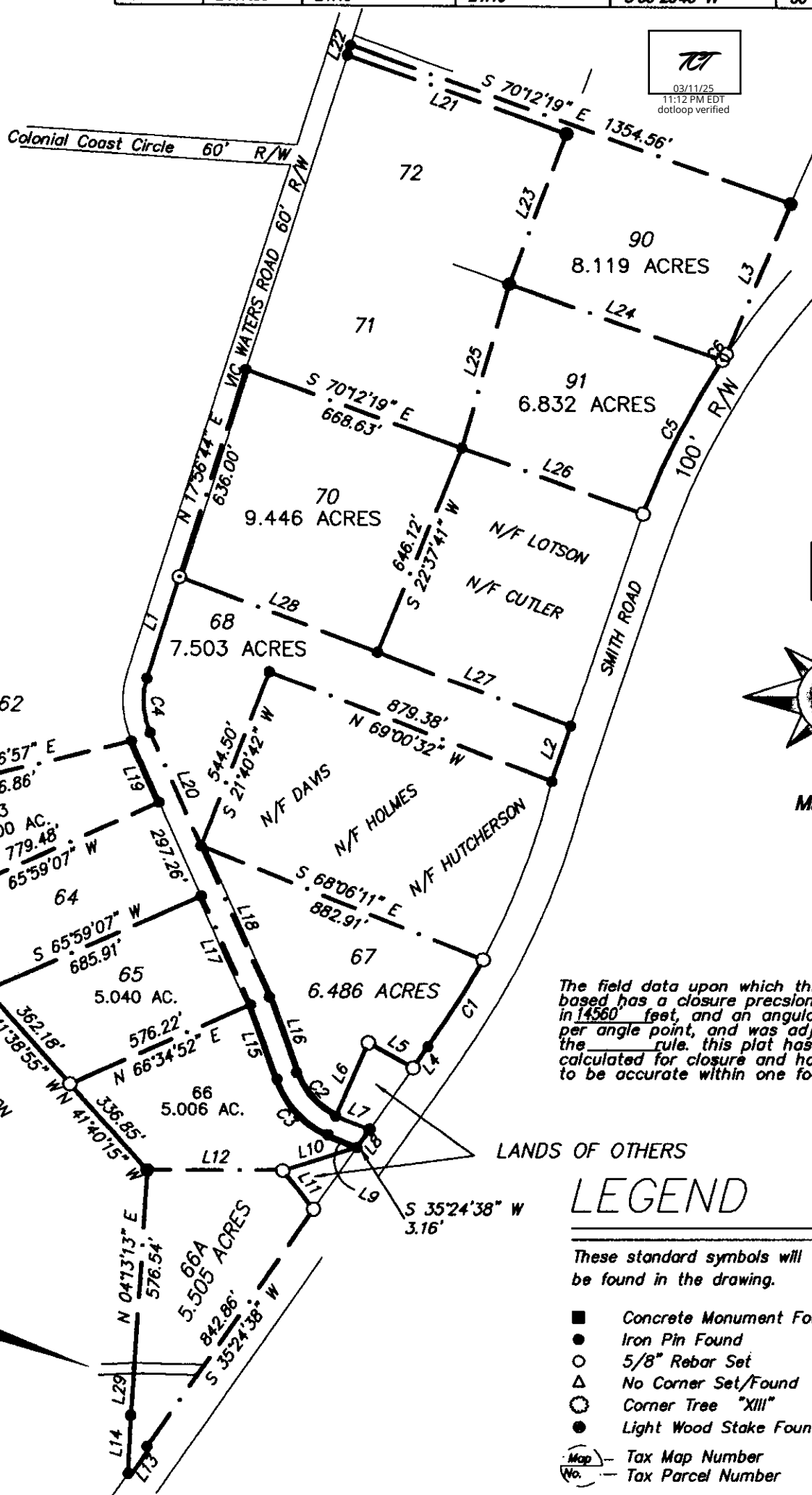
0' 400' 800' 1200'



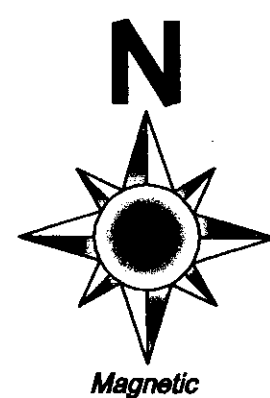
Scale 1"=400'

CURVE	RADIUS	ARC LENGTH	CHORD LENGTH	CHORD BEARING	DELTA ANGLE
C1	2280.79'	304.20'	303.97'	S 32°06'39" W	07°38'30"
C2	222.65'	174.30'	169.88'	N 41°50'53" W	44°51'14"
C3	281.98'	225.32'	219.38'	N 42°15'10" W	45°47'04"
C4	220.00'	181.12'	157.54'	N 03°02'04" W	41°57'37"
C5	2417.58'	505.11'	504.20'	N 27°11'33" E	11°58'16"
C6	2417.58'	21.15'	21.15'	S 33°25'43" W	00°30'05"

LINE	BEARING	DISTANCE
L1	N 17°58'44" E	310.02'
L2	S 16°39'01" W	170.31'
L3	S 23°09'39" W	480.27'
L4	S 35°24'38" W	74.93'
L5	N 60°49'46" W	148.76'
L6	S 24°33'38" W	233.66'
L7	S 68°00'34" E	108.81'
L8	S 35°24'38" W	61.68'
L9	N 68°00'34" W	92.49'
L10	S 72°41'28" W	227.15'
L11	S 36°01'09" E	143.55'
L12	S 89°43'51" E	394.68'
L13	S 35°08'07" W	96.53'
L14	N 02°49'41" E	169.75'
L15	N 19°16'26" W	228.11'
L16	N 19°16'26" W	230.59'
L17	N 24°00'53" W	351.15'
L18	N 24°00'53" W	485.54'
L19	N 24°00'53" W	195.06'
L20	N 24°00'53" W	360.42'
L21	N 70°12'19" W	675.78'
L22	S 17°58'44" W	30.02'
L23	N 20°46'09" E	470.07'
L24	N 70°12'19" W	652.61'
L25	N 18°06'54" E	501.03'
L26	N 70°12'19" W	555.54'
L27	N 69°18'26" W	598.22'
L28	N 69°18'26" W	616.25'
L29	N 04°13'13" E	136.67'
L30	N 17°58'44" E	131.99'



03/11/25
11:12 PM EDT
dotloop verified



The field data upon which this plat is based has a closure precision of one foot in 14560 feet, and an angular error of per angle point, and was adjusted using the rule. This plat has been calculated for closure and has been found to be accurate within one foot in 100,000+

McINTOSH COUNTY, GEORGIA
05 JUN -8 PM 12:43
Deeds of Charles Tomberlin
CLERK OF SUPERIOR COURT

5.505 ACRES
0.135 ACRES IN ROAD
5.370 ACRES In Lot 66A

LEGEND

- These standard symbols will be found in the drawing.
- Concrete Monument Found
 - Iron Pin Found
 - 5/8" Rebar Set
 - △ No Corner Set/Found
 - Corner Tree "XIII"
 - Light Wood Stake Found
 - Map No. - Tax Map Number
 - No. - Tax Parcel Number

I certify this plat to be a true and accurate representation of the land platted and it conforms to the minimum standards and requirements of law, and is suitable for recording.

I certify that in my opinion, the provisions in O.C.G.A. Section 15-06-67(d) does not require approval of this plat by the planning commission.

Charles H. Tomberlin, the Land Surveyor whose seal is affixed hereto does not guarantee that all easements which may affect this property are shown.

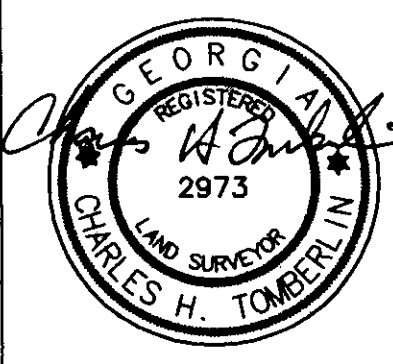
This plat has been recorded in Plat Cabinet 1, Page 241E in the Office of the Clerk of Superior Court of McIntosh County, Georgia. This 0 day of June 20 05
Time 12:43 PM
Ormonde M. Cotton, DCSC
Clerk of Superior Court

Survey For: **Raymond Bailey**
Lots 63,65,66,66A,67,70,90 & 91 Of Crescent Farms S/D

County: **McIntosh** City: _____ Scale: **1"=400'** Date: **05/26/2005**

PREPARED BY: **CHARLES H. TOMBERLIN and ASSOCIATES**
LAND SURVEYING
GMD 1515th Area: See Plat
Land District: _____ Project No: 2050505

CHARLES H. TOMBERLIN REGISTERED LAND SURVEYOR #2973
4903 JANA LANE
WAYCROSS, GEORGIA 31503
PH. 912-283-2973 FAX 912-285-9372
Drawn By: **Bose** Checked By: **CHT**



STATE OF GEORGIA

EQUIPMENT USED:
SOKKIA SET 500
100' TAPE

NOT AN ORIGINAL DOCUMENT UNLESS STATE IS VISIBLE BEHIND SEAL