



**T R O P H Y**  
 PROPERTIES AND AUCTION  
 LAND | RECREATIONAL | RESIDENTIAL

# 53.51± Acre Recreational Property for Sale - Howard County

www.TrophyPA.com • (855) 573-5263 • leads@trophyapa.com



**PROPERTY ADDRESS:**

00 Co Rd 117  
 Clark, MO 65243

**PRICE:** \$\$347,815

**ACRES:** 53.51±

**COUNTY:** Howard

**PROPERTY HIGHLIGHTS:**

- White oak timber Area
- Fayette School District • Hunting
- Near Rudolf Bennitt Conservation • Recreation

**PROPERTY DESCRIPTION:**

This 53.51 acre recreational farm, located in Howard County, MO, is a hunter's paradise. This property features mature white oak time that offers prime habitat for deer, turkey, and small game. The established hardwoods provide both cover and food sources, creating ideal conditions for successful hunts throughout the season.

The property is in the Fayette School District, 9 miles west of Highway 63 and just north of Harrisburg, MO. The property is only a few miles south of the Rudolf Bennitt Conservation Area, known for its abundant wildlife and outdoor opportunities. Whether you're looking for a weekend hunting retreat or a long-term investment in recreational land, this farm delivers.

The property's diverse terrain includes gently rolling hills and flat timbered sections, providing natural travel corridors and bedding areas for wildlife. With a healthy population of whitetail deer and turkeys, as well as opportunities for small game, this farm is ready for your hunting blinds and stands.



**PRESENTED BY:**

**JASON CHINN**

**Land & Home Specialist**

M: (573) 514-9368

P: (855) 573-5263 x708

E: jchinn@trophyapa.com

**Trophy Properties and Auction**

640 Cepi Drive, Suite 100

Chesterfield, MO 630056

www.Trophyapa.com

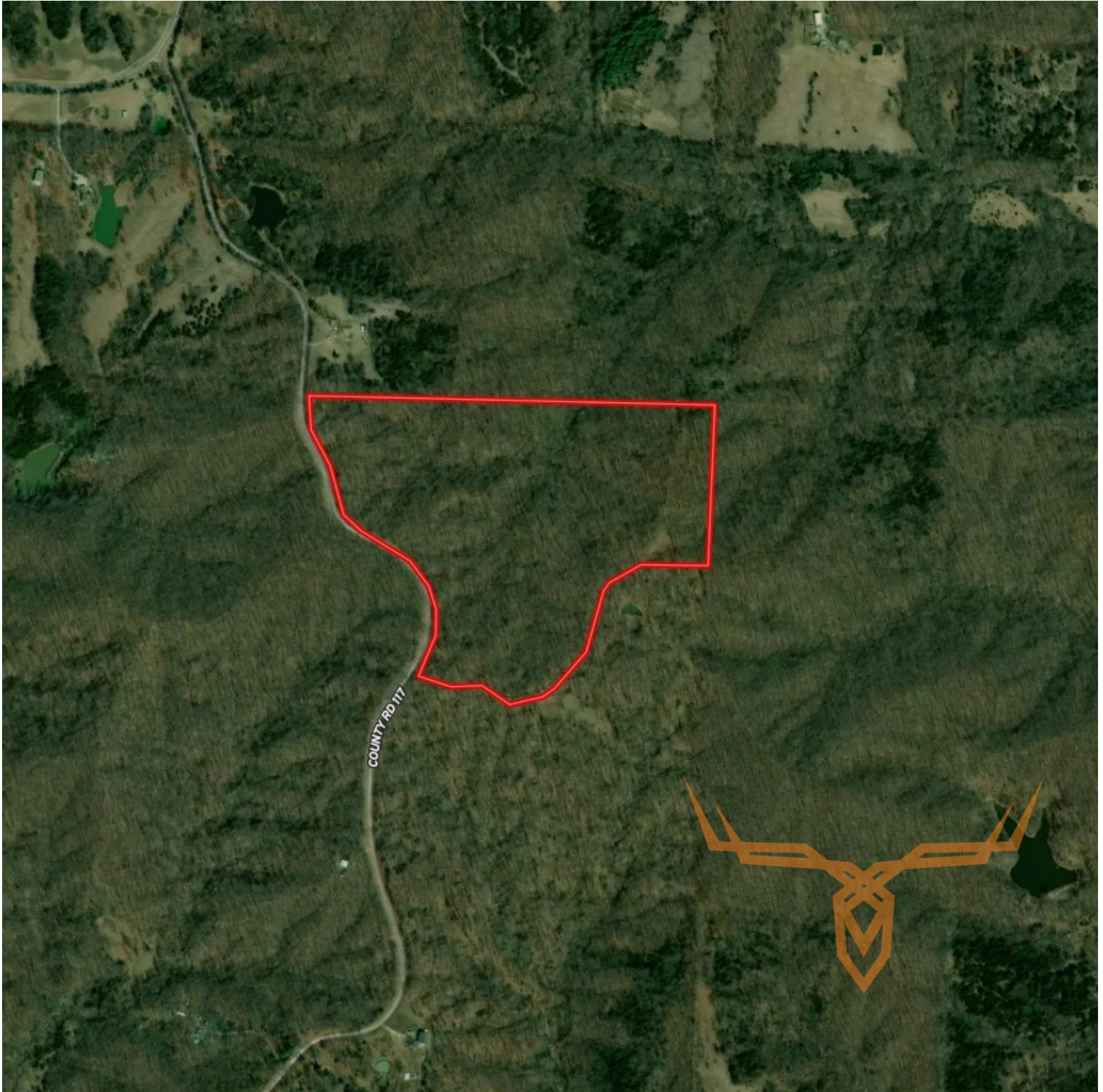
leads@trophyapa.com



# 53.51± Acre Recreational Property for Sale - Howard County

**T R O P H Y**  
PROPERTIES AND AUCTION  
LAND | RECREATIONAL | RESIDENTIAL

[www.TrophyPA.com](http://www.TrophyPA.com) • (855) 573-5263 • [leads@trophyPA.com](mailto:leads@trophyPA.com)



Broker does not guarantee the accuracy of sq. ft., lot size, or other information, buyer is advised to independently verify the accuracy of information through personal inspection and with appropriate professionals