

WEDNESDAY, APRIL 23 | 10 AM

MULTI-PROPERTY AUCTION

14 INCOME-PRODUCING INVESTMENT PROPERTIES THROUGHOUT:
WICHITA FALLS • IOWA PARK • SEYMOUR • MUNDAY • PADUCAH • ELECTRA • HENRIETTA • KNOX CITY • CROWELL



28 UNIT RV & BOAT STORAGE

- 5.33± Acres
- Fenced & Gated with Hwy 281 Frontage
- Property Location: 753 US Hwy 281
Wichita Falls, Archer County, TX 76310



24 UNIT SELF STORAGE FACILITY

- Across from Iowa Park Hawk Stadium
- Close proximity to Hwy 287
- Property Location: 1209 Johnson Rd
Iowa Park, Wichita County, TX 76367



48 UNIT SELF STORAGE FACILITY | 14,000± SQFT PARCEL

- Excellent location Downtown Seymour
- Property Location: 501/ 515-519 N Main St
Seymour, Baylor County, TX 76380



48 UNIT SELF STORAGE FACILITY

- Close proximity to Hwy 277
- Property Location: 100 Jean St
Munday, Knox County, TX 76371



24,750± SQFT VACANT PARCEL

- Potential Home-site
- Property Location: NE Corner of N Fir Ave & EB St
Munday, Knox County, TX 76371



23 UNIT SELF STORAGE FACILITY

- Hwy 83 & Breckenridge St Frontage
- Property Location: 1409 9th St
Paducah, Cottle County, TX 79248



44 UNIT SELF STORAGE FACILITY | 14,400± SQFT PARCEL

- Property Location: 202 E Ikard
Henrietta, Clay County, TX 76365



48 UNIT SELF STORAGE FACILITY

- Hwy 222 Frontage
- Property Location: 1201 E Main St
Knox City, Knox County, TX 79529

**PARTIAL LIQUIDATION OF THE
RONNY BAIZE ESTATE &
BAIZE SELF STORAGE, LLC**

SCAN FOR
ADDITIONAL
PROPERTY
INFORMATION
→



AUCTION LOCATION: DELTA HOTELS BY MARRIOTT | 306 TRAVIS ST, WICHITA FALLS, TX 76301



**CRAIG BUFORD
BROKER/ AUCTIONEER
405-833-9499**

**VAN BAIZE
REAL ESTATE ASSOCIATE
940-366-3407**

TXMultiPropertyAuction.com | BufordResources.com

Terms: **10% Buyer's Premium.** Buyer is responsible for doing due diligence. Visit website for full auction terms. Franchise office is independently owned & operated. **TX 13500**



20 UNIT SELF STORAGE FACILITY

- Bus. Hwy 287 Frontage
- Property Location: 416 E Cleveland Ave
Electra, Wichita County, TX 76360



24 UNIT SELF STORAGE FACILITY

- Close proximity to Bus. Hwy 287
- Property Location: 419 E Cleveland Ave
Electra, Wichita County, TX 76360



42 UNIT SELF STORAGE FACILITY | 21,000± SQFT PARCEL

- Property Location: 520/ 504-506 W Bryan Ave
Electra, Wichita County, TX 76360



RV PARK SITE

- Hwy 70 Frontage
- Property Location:
NW Corner of W Commerce & N B Ave
Crowell, Foard County, TX 79227



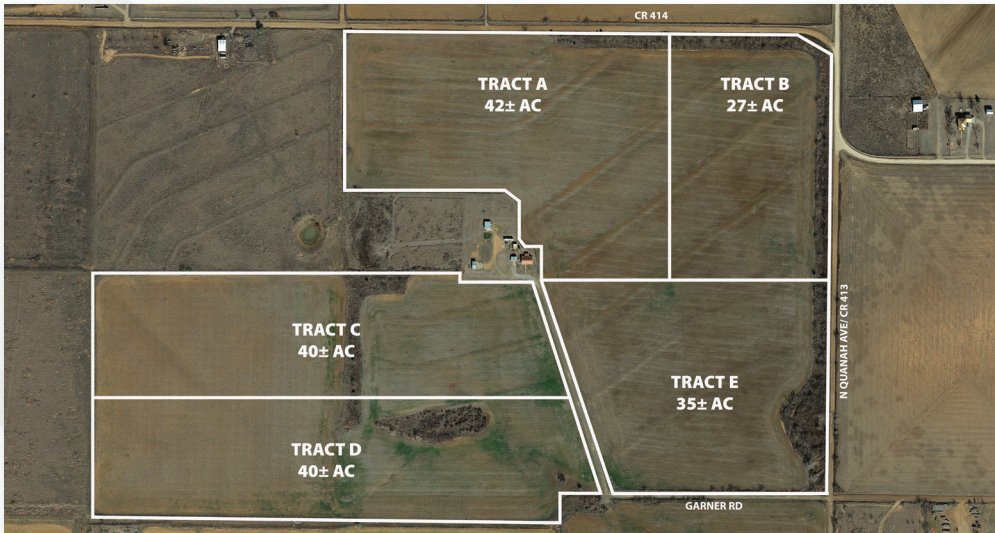
VACANT LOT W/ EXISTING SHELL

- Located Downtown Crowell
- Exceptional Location on the Square
- Property Location: 115 S 1st St
Crowell, Foard County, TX 79227



2010 WINNEBAGO TOUR BUS

- 2010 Winnebago Tour 40BD 40' 6" Class A Motorhome in Excellent Condition
- Cummins 400 HP Diesel Engine
- 3 Slide Outs, Awning, Sleeps 4, Dual A/C Units, Leveling System



184.59± ACRES - BUY ALL OR PART!

- 0.5± mi N of Hwy 70 on CR 413
- Development Potential, Productive Land
- Property Location: NW Corner of Garner Rd & County Road 413
Crowell, Foard County, TX 79227

**MULTI-PROPERTY AUCTION:
WED, APRIL 23 | 10 AM**



**AUCTION LOCATION:
DELTA HOTELS BY MARRIOTT
306 TRAVIS ST
WICHITA FALLS, TX 76301**

United Country Real Estate | **Buford Resources Real Estate & Auction**

**Craig Buford, Broker/Auctioneer
TX #13500**

405-833-9499

**Van Baize, Real Estate Associate
940-366-3407**

Terms: **10% Buyer's Premium.** Buyer is responsible for doing due diligence. Visit website for full auction terms. Franchise office is independently owned & operated. **TX 13500**