



## Southern Iowa Hunting & Recreational Property

189th Street, Albia, IA 52531

**Hawkeye Farm  
Mgmt & Real Estate**

**Price:** \$554,400

**Acres:** 99 +/-

**Price/Acre:** \$5,600







### PROPERTY DETAILS

- 19 CRP Acres Generating \$4,890 Annually
- New 32'x40' Building
- Established Food Plots
- Multiple Access Points
- Seasonal Creek & New Pond
- Cabin or Home Sites
- Diverse Terrain & Extensive Trail System
- Annual Taxes \$1,050

### CONTACT US



**Hawkeye  
Farm Mgmt &  
Real Estate**

 (641) 932-7796  
 [Hawkeye@UClowa.com](mailto:Hawkeye@UClowa.com)  
 [www.UClowa.com](http://www.UClowa.com)  
 1010 S Clinton  
 Albia, IA 52531



**RYAN AMMONS**  
(641) 777- 2955

[Ryan@UClowa.com](mailto:Ryan@UClowa.com)



**NATE AMMONS**  
(641) 777-2861

[Nate@UClowa.com](mailto:Nate@UClowa.com)



Ryan Ammons, Broker, Licensed in Iowa. Alan Ammons, Broker Associate, Licensed in Iowa & Missouri. All Agents Licensed in Iowa. The above information, although believed to be accurate, is not warranted or guaranteed by the owner, listing firm, or listing agent.

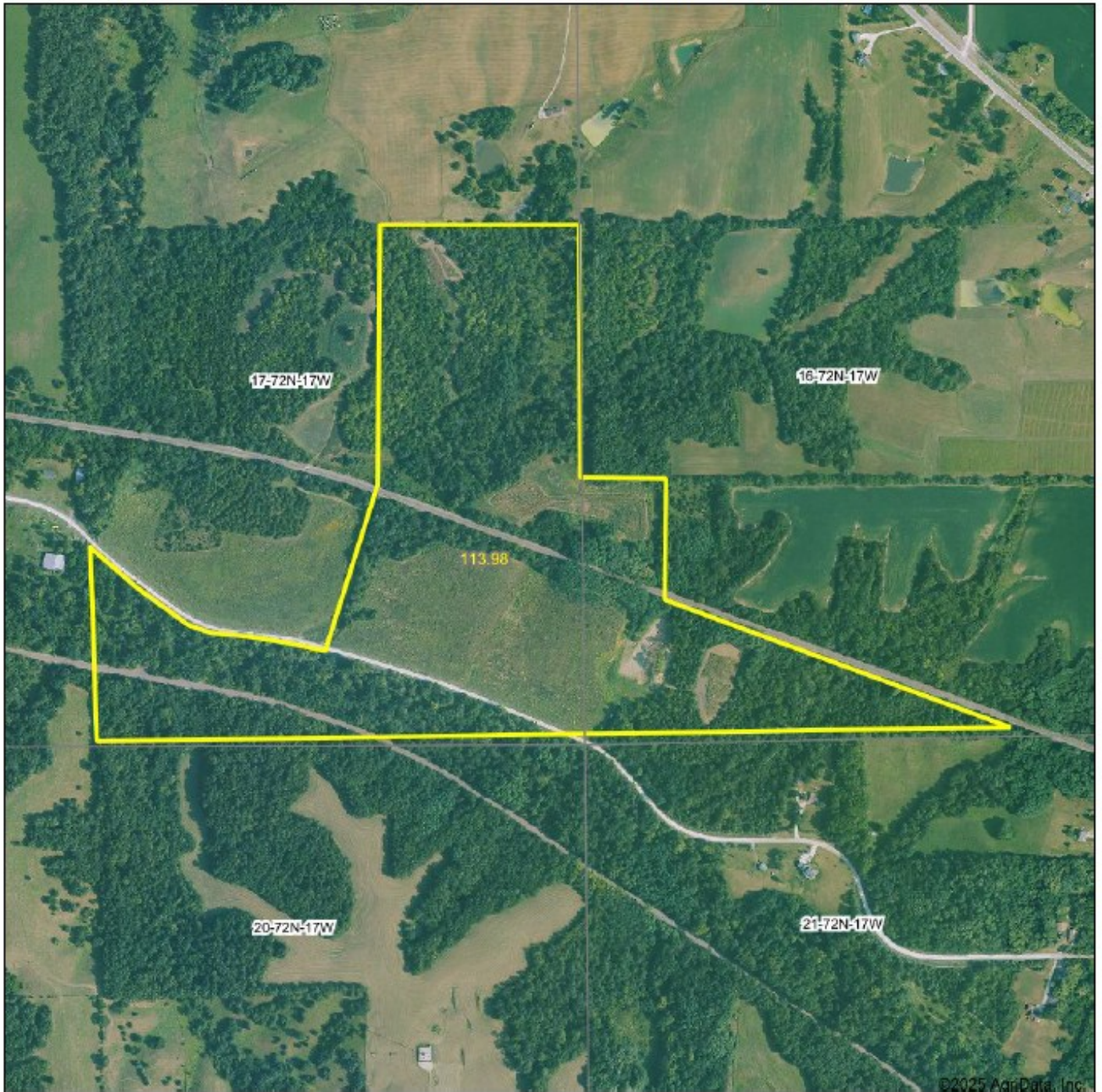
# PROPERTY MAP



**Hawkeye  
Farm Mgmt &  
Real Estate**

## Aerial Map

\*Boundary Lines Are Approximate - Map Includes Parts of 189th Street and 2 Railroads\*



©2025 AgriData, Inc.

**Hawkeye Farm Mgmt & Real Estate**



22 N Main, Wills IA Phone: 540-932-7706  
Email: hawkeye@unitedcountry.com  
Or on the web: www.adoris.com  
www.iowawhitehallfarms.com

Boundary Center: 41° 2' 1.93, -92° 49' 55.26

0ft 807ft 1613ft

**17-72N-17W  
Monroe County  
Iowa**



Maps Provided By:



© AgriData, Inc. 2025 www.AgriDataInc.com

1/29/2025