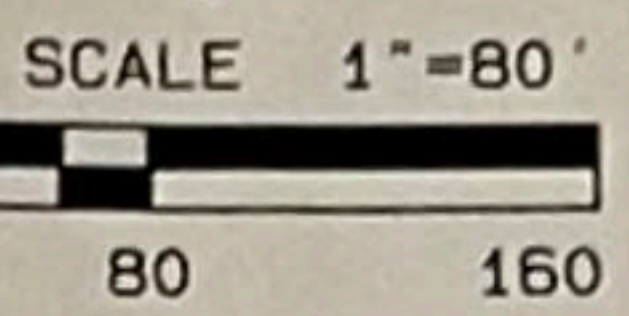


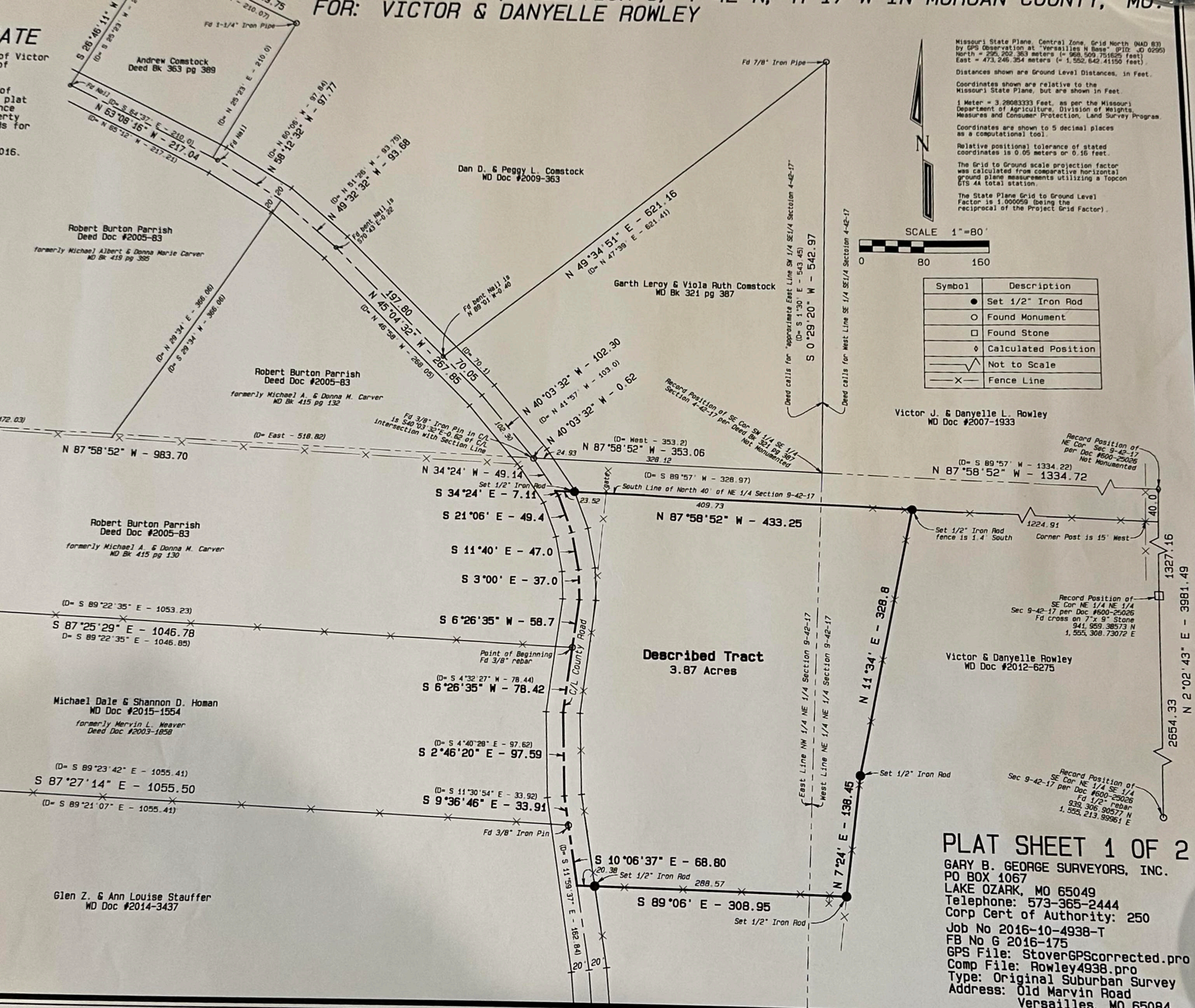
FOR: VICTOR & DANYELLE ROWLEY

ATE
of Victor
of
plat
nce
erty
s for
016.

Missouri State Plane, Central Zone, Grid North (NAD 83) by GPS Observation at "Versailles N Base" (PID: JD 0295)
North = 295,202.363 meters (= 968,509.751625 feet)
East = 473,246.354 meters (= 1,552,642.41150 feet)
Distances shown are Ground Level Distances, in Feet.
Coordinates shown are relative to the Missouri State Plane, but are shown in Feet.
1 Meter = 3.28083333 Feet, as per the Missouri Department of Agriculture, Division of Weights, Measures and Consumer Protection, Land Survey Program.
Coordinates are shown to 5 decimal places as a computational tool.
Relative positional tolerance of stated coordinates is 0.05 meters or 0.16 feet.
The Grid to Ground scale projection factor was calculated from comparative horizontal ground plane measurements utilizing a Topcon GTS 4A total station.
The State Plane Grid to Ground Level Factor is 1.000059 (being the reciprocal of the Project Grid Factor).



Symbol	Description
●	Set 1/2" Iron Rod
○	Found Monument
□	Found Stone
◇	Calculated Position
—	Not to Scale
—X—	Fence Line



PLAT SHEET 1 OF 2
GARY B. GEORGE SURVEYORS, INC.
 PO BOX 1067
 LAKE OZARK, MO 65049
 Telephone: 573-365-2444
 Corp Cert of Authority: 250
 Job No 2016-10-4938-T
 FB No G 2016-175
 GPS File: StoverGPScorrected.pro
 Comp File: Rowley4938.pro
 Type: Original Suburban Survey
 Address: Old Marvin Road
 Versailles, MO 65084