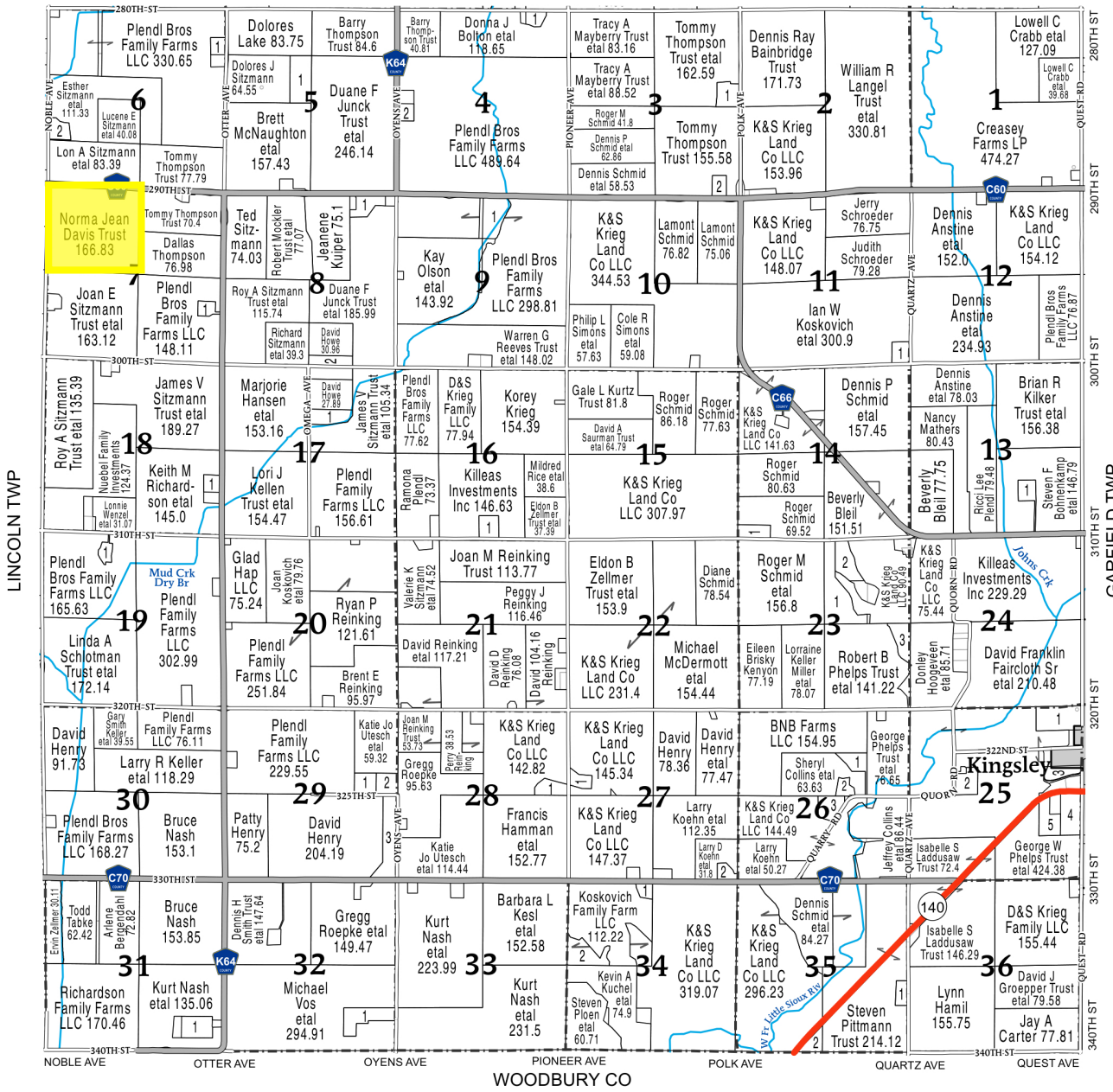


(Landowners)
UNION TWP



ELKHORN TOWNSHIP

SECTION 3	
1 KINGSLEY SOW LLC	11.45
2 BOTTORFF, TROY ETAL	6.41
SECTION 4	
1 BOLTON, DANIEL T ETAL	5.77
2 PLENDL, ROBERT D	5.76
SECTION 5	
1 SITZMANN, JODY ETAL	22.01
SECTION 6	
1 WANKUM, MATTHEW D ETAL	5.51
2 SITZMANN, LUKE	8.41
SECTION 7	
1 HANEKLAUS, JAMES BRYAN ETAL	5.69

SECTION 8	
1 GUTIERREZ ALVAREZ, JOSE ETAL	11.5
2 HERBST, LARRY JOHN ETAL	9.33
SECTION 9	
1 PLENDL, RICCI LEE	19.17
SECTION 11	
1 LANGEL, RYAN W ETAL	8.25
SECTION 13	
1 PRATT, ANDREW JACOB	8.79
SECTION 14	
1 SCHMID, ROGER M ETAL	9.29
SECTION 16	
1 RYAN, DOUGLAS R ETAL	9.55

SECTION 17	
1 HOWE, DAVID A	23.66
SECTION 18	
1 RICHARDSON FAMILY FARMS LLC	6.1
SECTION 19	
1 THARP, CRAIG W ETAL	5.48
SECTION 23	
1 COUNTY OF PLYMOUTH	36.58
2 BADGEROW, TIMOTHY B	15.28
3 HOOGEVEEN, DONLEY D ETAL	12.53
SECTION 25	
1 TOWN OF KINGSLEY	23.91
2 WILSON, DEAN	11.75
3 KINGSLEY PIERSON COMM SCHOOL DIST	9.87

4 PLENDL FEED SERVICE INC	18.83
5 LUND, JERAMY ETAL	13.79
SECTION 26	
1 COLLINS, WE ETAL	10.05
2 SOCKNAT, REBECCA LOUISE ETAL	5.85
3 MOELLER, NATHANAN W ETAL	11.59
SECTION 27	
1 KUCHEL, CHAD P ETAL	6.79
2 KABISCH JR, ROBERT GENE ETAL	5.98
SECTION 28	
1 CARLSON, BRUCE E ETAL	9.75
SECTION 29	
1 ROEPKE, GREGG L ETAL	9.61
2 UTESCH, KATIE J ETAL	9.58

3 HAMMAN, FRANCIS ETAL	26.49
SECTION 31	
1 NASH, KURT ETAL	14.36
SECTION 32	
1 HASS TRUST, ALAN	19.55
SECTION 34	
1 RASSEL, JASON A	5.02
2 KUCHEL, NICHOLAS A ETAL	34.06
SECTION 35	
1 PITTMANN TRUST, STEVEN FRED	6.23
2 PRATT, BEN	7.1

