



**29± ACRES**  
**JACKSON PARISH, LA**  
**\$105,000**



**SMALLTOWN**  
HUNTING PROPERTIES  
& REAL ESTATE<sup>SM</sup>

OFFICE (318) 974-8185

# THE JACKSON 29

## PROPERTY PROFILE

### LOCATION:

- HWY 505 Wyatt, LA 71251
- Jackson Parish
- Situated in Sec 31, T14N, R3W
- 6.6± Miles S of Jonesboro
- 28± Miles S of Ruston

### COORDINATES:

- 32.15228, -92.70866

### PROPERTY USE:

- Homesite Potential
- Hunting
- Recreation

### PROPERTY INFORMATION:

- 29± Total Acres
- 12± Acres Natural Regeneration
- Frontage on HWY 505
- Antwine Creek Frontage
- Hardwood Creek Bottoms
- Small Pond
- Utilities Nearby

### TAX INFORMATION:

2023 - \$57

- Parcel ID: 0040095400



**SMALLTOWN**  
HUNTING PROPERTIES  
& REAL ESTATE<sup>SM</sup>

**HEATH EUBANKS**

SPONSORING BROKER

C: 318-608-7848

O: 318-974-8185

[heath@smalltownproperties.com](mailto:heath@smalltownproperties.com)

4848 Main St. - Flora, MS 39071

[smalltownproperties.com](http://smalltownproperties.com)

Information is believed to be accurate but not guaranteed.

# WELCOME TO THE JACKSON 29

**WELCOME TO THE JACKSON 29, SITUATED JUST SOUTH OF JONESBORO, LA, OFF HIGHWAY 505.** The 29± acre Jackson Parish tract offers hunting along with homesite potential. Antwine Creek, a big year-round water source, meanders the west side of the property, adding a beautiful natural feature and plenty of wildlife habitat. With paved road frontage and utilities nearby, this place has everything you need to build a home or set up a weekend getaway.

Of the total 29± acres, approximately 12 acres is young natural regeneration with a mix of hardwoods and gum trees, providing great cover for wildlife. The remaining balance is hardwood creek bottom along Antwine Creek that will offer good hunting opportunities. Additionally, you will find a small pond that is sure to offer some enjoyment. While walking the property, several deer and plenty of hogs were moving through, so this area is definitely holding game. A portion of the tract does lie in the flood zone along the creek, but there's high ground for a camp or home.

If you have been searching for a quiet place to build or just a solid hunting spot, the Jackson 29 should be on your list to visit!

**Call Heath Eubanks today to schedule a personal tour.**



**SMALLTOWN**  
HUNTING PROPERTIES  
& REAL ESTATE<sup>SM</sup>

**HEATH EUBANKS**

SPONSORING BROKER

C: 318-608-7848

O: 318-974-8185

[heath@smalltownproperties.com](mailto:heath@smalltownproperties.com)

4848 Main St. - Flora, MS 39071

[smalltownproperties.com](http://smalltownproperties.com)

Information is believed to be accurate but not guaranteed.

29 ± ACRES

JACKSON PARISH, LOUISIANA



**SMALLTOWN**  
HUNTING PROPERTIES  
& REAL ESTATE<sup>SM</sup>

**HEATH EUBANKS**

SPONSORING BROKER

C: 318-608-7848

O: 318-974-8185

[heath@smalltownproperties.com](mailto:heath@smalltownproperties.com)

4848 Main St. - Flora, MS 39071

[smalltownproperties.com](http://smalltownproperties.com)

Information is believed to be accurate but not guaranteed.

29 ± ACRES

JACKSON PARISH, LOUISIANA



**SMALLTOWN**  
HUNTING PROPERTIES  
& REAL ESTATE<sup>SM</sup>

**HEATH EUBANKS**

SPONSORING BROKER

C: 318-608-7848

O: 318-974-8185

[heath@smalltownproperties.com](mailto:heath@smalltownproperties.com)

4848 Main St. - Flora, MS 39071

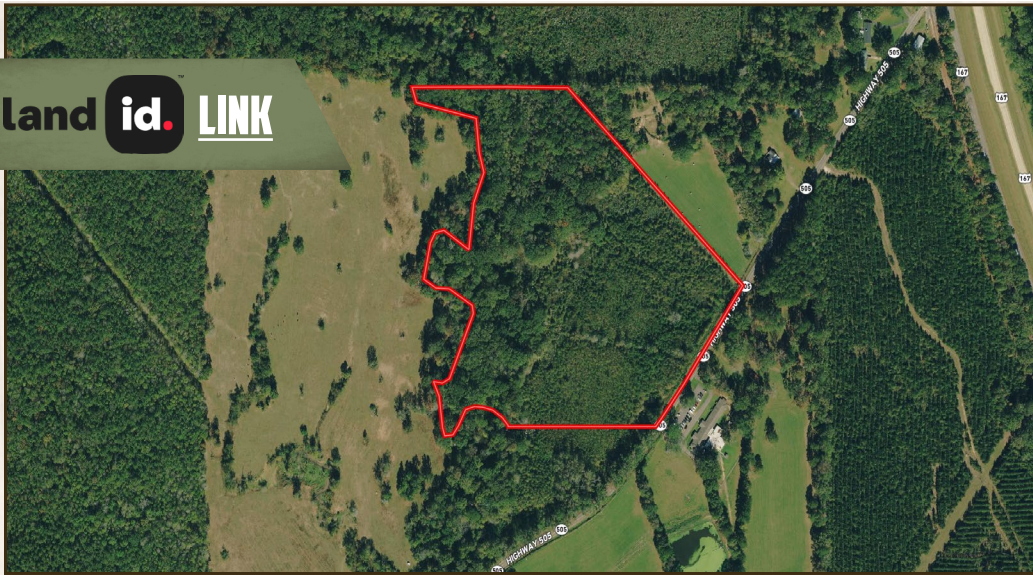
[smalltownproperties.com](http://smalltownproperties.com)

Information is believed to be accurate but not guaranteed.

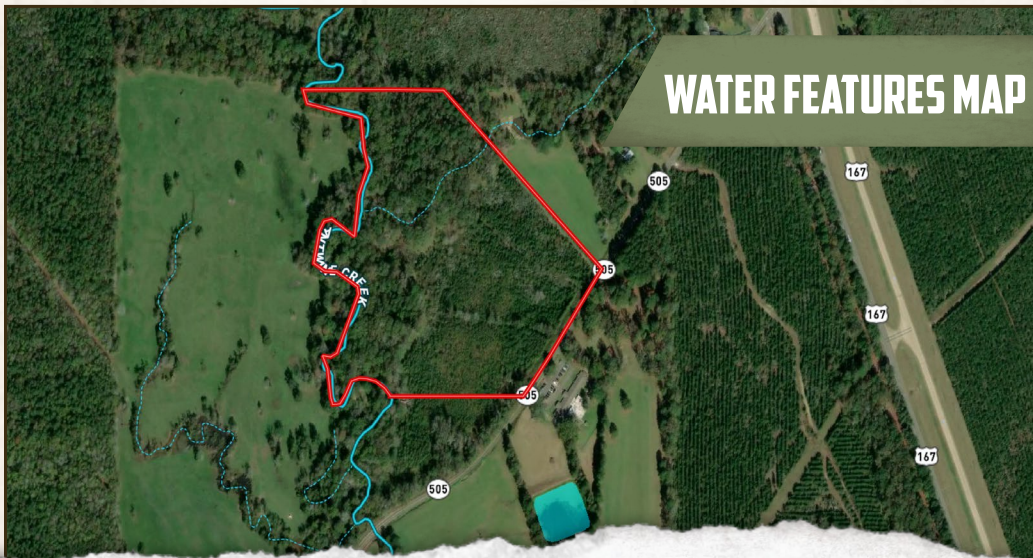
29 ± ACRES

JACKSON PARISH, LOUISIANA

land id. LINK



## WATER FEATURES MAP



**SMALLTOWN**  
HUNTING PROPERTIES  
& REAL ESTATE<sup>SM</sup>

HEATH EUBANKS

SPONSORING BROKER

C: 318-608-7848

O: 318-974-8185

[heath@smalltownproperties.com](mailto:heath@smalltownproperties.com)

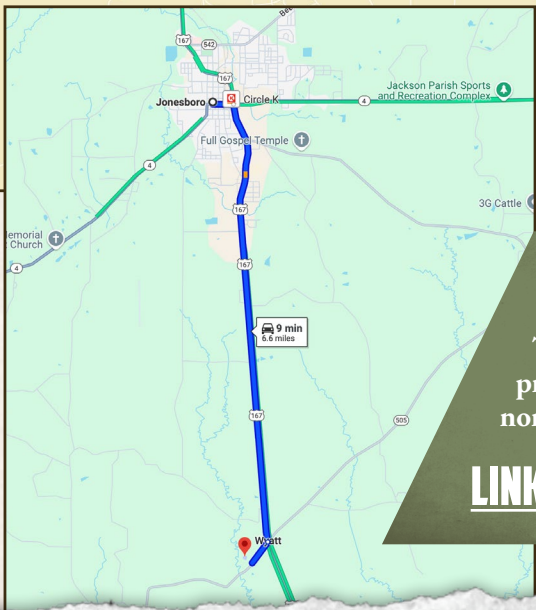
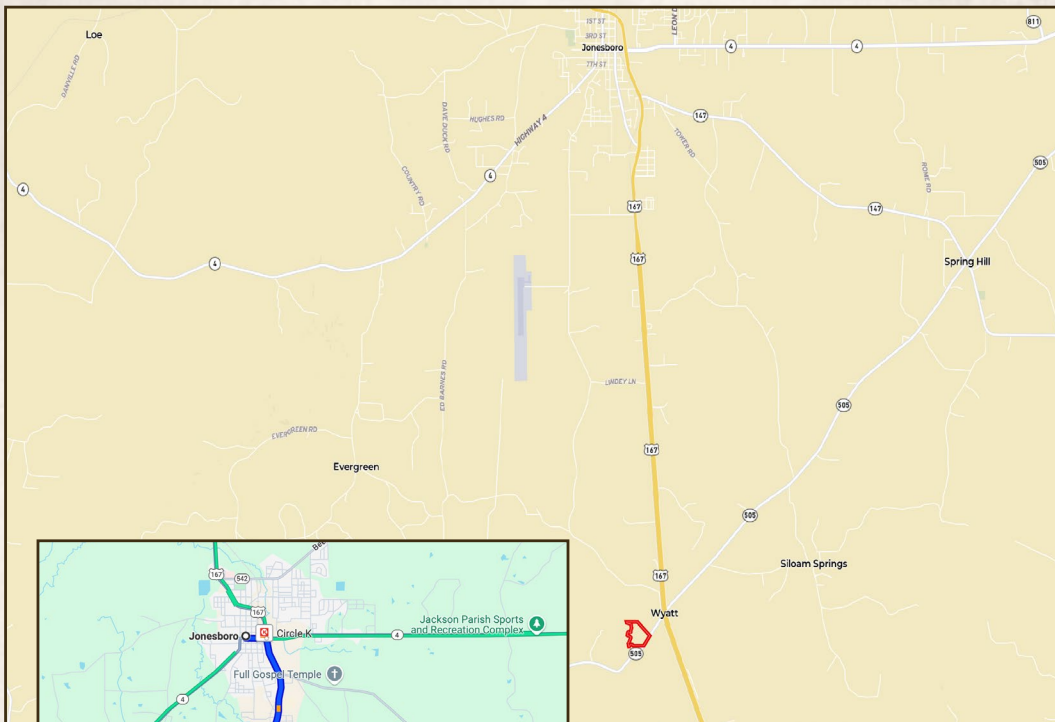
4848 Main St. - Flora, MS 39071

[smalltownproperties.com](http://smalltownproperties.com)

Information is believed to be accurate but not guaranteed.

29 ± ACRES

JACKSON PARISH, LOUISIANA



Directions From Jonesboro, LA:  
Travel 6 miles south on HWY 167.  
Turn right onto HWY 505 and  
proceed 0.5 miles to the property on the  
north side of HWY 505.

[LINK TO GOOGLE MAP DIRECTIONS](#)



**SMALLTOWN**  
HUNTING PROPERTIES  
& REAL ESTATE<sup>SM</sup>

**HEATH EUBANKS**

SPONSORING BROKER

C: 318-608-7848

O: 318-974-8185

[heath@smalltownproperties.com](mailto:heath@smalltownproperties.com)

4848 Main St. - Flora, MS 39071

[smalltownproperties.com](http://smalltownproperties.com)

Information is believed to be accurate but not guaranteed.