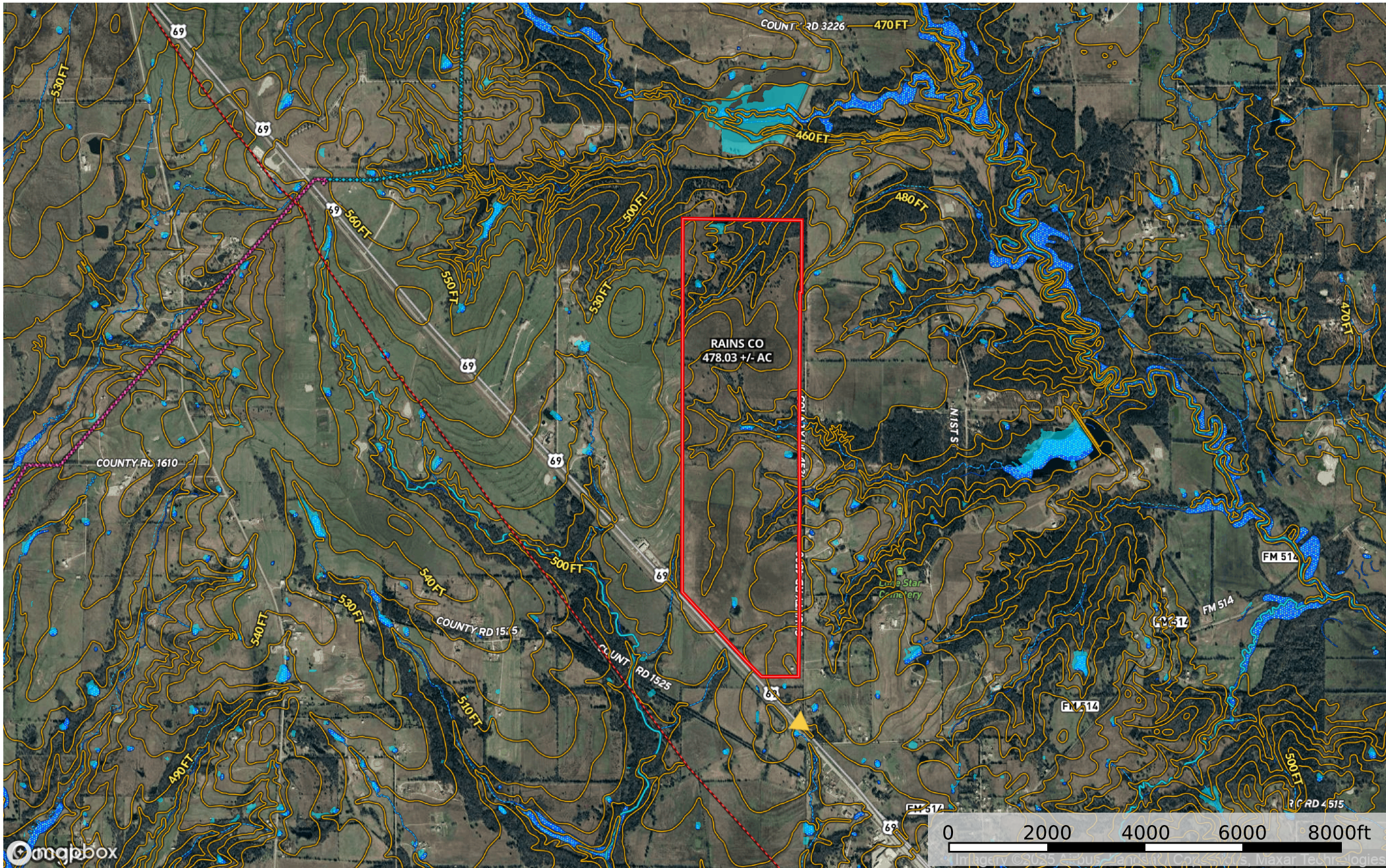


Hwy 69 & CR 4530, Point, TX. Aerial

Rains County, Texas, 478.083 AC +/-



Direction	Boundary	100 Year Floodplain	500 Year Floodplain	Floodway	Special	Unmapped/ Not Included	Wetlands	Riparian	Stream, Intermittent	River/Creek	Water Body	Water Wells	Voltage Unavailable
Voltage 0 - 99 KV	Voltage 100 - 161 KV	Voltage 220 - 287 KV	Voltage 345 KV	Voltage 500 KV	Voltage 735 KV+	Crude Oil	Natural Gas	Other					

The information contained herein was obtained from sources deemed to be reliable. Land id™ Services makes no warranties or guarantees as to the completeness or accuracy thereof.