

# SHOCKLEY ENGINEERING AND SURVEYING

200 S. RICE AVE. HAMILTON, TEXAS 76531

OFFICE PH. 254-386-8580

## FIELD NOTES

THE STATE OF TEXAS

MILLS COUNTY

All that certain tract or parcel of land situated in Mills County, Texas being 161.035 acres of land out of Section 2, G.H.& H. RRY. Co. Survey, patented to F. M. Anderson, A-1065 and being a part of that 162.642 acres tract described in Deed to Rubie M Volek per Vol. 205, page 684 Mills County Deed Records, said 161.035 acres tract described by metes and bounds as a result of this survey as follows;

BEGINNING at a steel pin found in the South line of F.M. Hwy 2005, the NEC of said 162.642 acres tract and the NEC of this;

THENCE S20-05-41E (all GPS bearings) along the fenced East line of said 162.642 acres tract, at 2607.30 feet a 3/8" steel pin found at the base of a corner post, the SEC of this;

THENCE along fence crossing a branch with 6" pine post set in concrete at the corners as follows;

S59-52-42W, 76.92'

S67-20-45W, 55.32'

S82-22-04W, 74.52'

THENCE S70-07-03W along the fenced North line of the adjoining Lewis Watson tract per Vol. 73, page 604 said Deed Records, at 2508.41 a 3/8" steel pin with cap set at the base of a 12" cedar corner post, the SWC of this;

THENCE N18-49-34W along fence, at 2022.20 feet a 3/8" steel pin set at a corner post on the toe of a dam for a farm pond, an exterior corner of this;

THENCE along fence circumventing said dam as follows;

N82-04-22E, 45.56 feet, a steel pin found,

N13-12-03W, 163.66 feet, a 3/8" steel pin with cap set,

N85-31-45W, 66.86 feet, a 3/8" steel pin with cap set at the base of a corner post,

THENCE N18-45-27W along a pipe fence, at 422.41 feet a steel pipe for a corner post, the NWC of this;

THENCE along the fenced South line of F.M. 2005 as follows;

N68-48-12E, 663.87', a 3/8" steel pin with cap set at the base of a corner post.

N74-29-12E, 134.00', a 3/8" steel pin with cap set at the base of a corner post,

N69-03-19E, 407.41', a steel pipe for a corner post,

N63-08-42E, 86.03', a steel pipe for a corner post,

N69-04-19E, 856.68', a steel pipe for a corner post, the NWC of a 1.571 acres tract

fractured from said 162.642 acres tract for James Lee Hoffpauir per Vol. 305, page 779 said Deed Records;

THENCE along the fenced lines of said 1.571 acres tract with 3/8" steel pins set at the base of corner posts as follows;

S24-27-56E, 237.77',

N84-27-39E, 162.50',

N69-01-22E, 93.86', the SEC of said 1.571 acres tract,

N17-39-28W, 146.04', a concrete block shed for a water well,

N74-28-03E, 6.88', an exterior corner of same,

N15-32-44W, 9.03', an exterior corner of same,

S72-20-58W, 6.98', an interior corner of this;

N14-43-09W, 104.90', a 3/8" steel pin with cap set in the South line of said highway, the NEC of said 1.571 acres tract,

THENCE N80-11-21E along highway, at 225.18 feet the Point of Beginning and containing 161.035 acres of land.

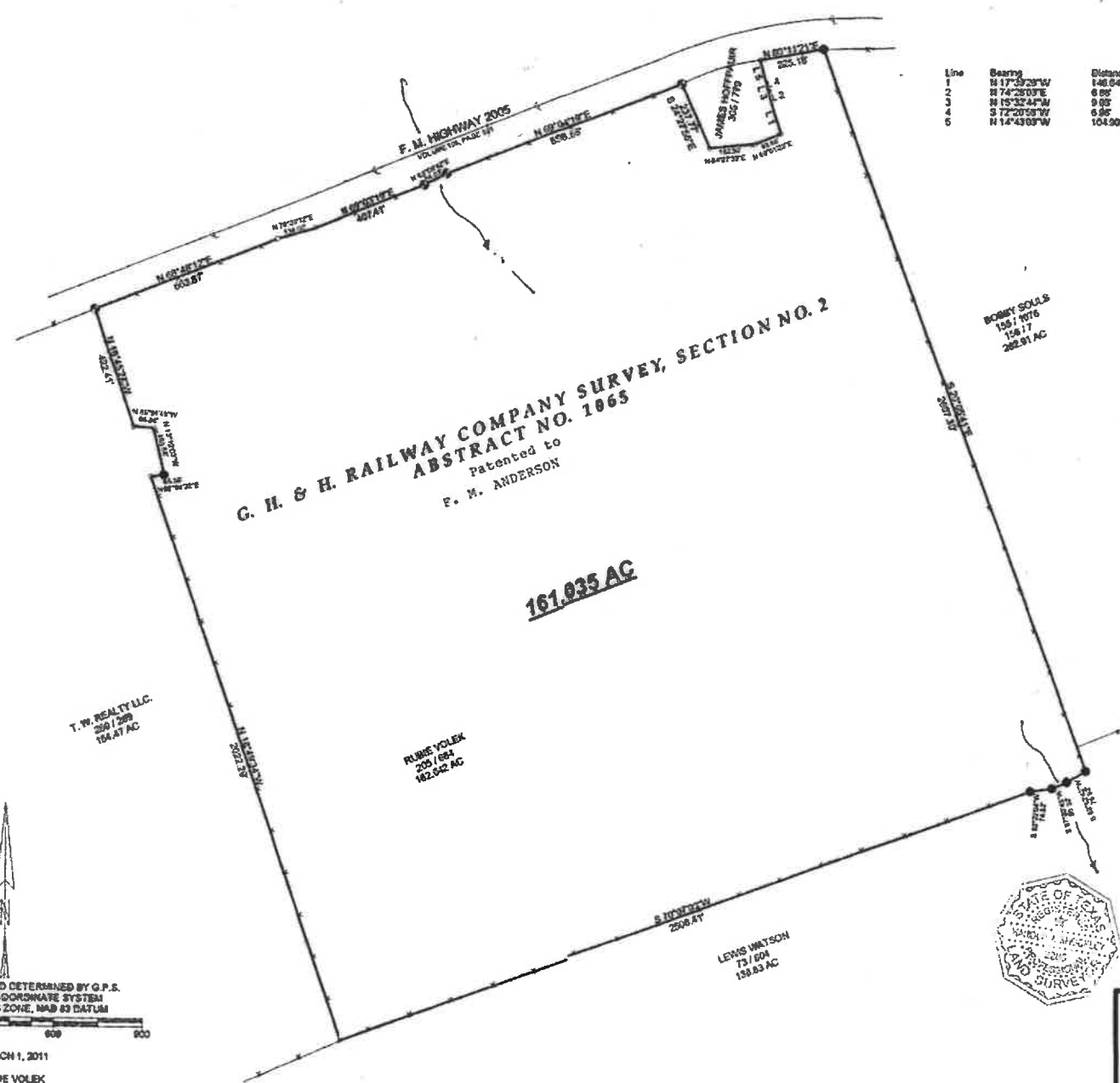
Surveyed; 29 Feb 2011,  
For, Rubie Volek

Rodman; Brandon Buffe

I, Harold J. Shockley, Registered Professional Land Surveyor of the State of Texas do hereby state that the foregoing survey was made by me, on this date, on the ground and that the corners are marked as indicated in the field notes and on the plat attached hereto. I also state that to the best of my professional knowledge and belief that there are no shortages of area, that there are no encroachments, protrusions, visible easements, or flood hazards, except as shown and that the property has access to a public road.



Harold J. Shockley  
Registered Prof. Land Surveyor  
No. 2286 of Texas



Line	Bearing	Distance
1	N 17° 32' 23" W	146.94
2	N 74° 23' 30" E	6.88
3	N 15° 32' 47" W	9.85
4	S 72° 20' 59" W	6.95
5	N 14° 43' 09" W	104.90

**G. H. & H. RAILWAY COMPANY SURVEY, SECTION NO. 2**  
**ABSTRACT NO. 1065**  
 Patented to  
**F. M. ANDERSON**

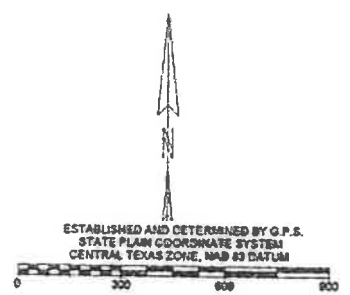
**161.935 AC**

T.M. REALTY LLC  
 159.739  
 164.47 AC

RUBIE VOLEK  
 205 / 694  
 162.042 AC

BOBBY SOLLS  
 159 / 7076  
 124.17  
 262.91 AC

LEWIS WATSON  
 75 / 604  
 158.83 AC



ESTABLISHED AND DETERMINED BY G.P.S.  
 STATE PLAIN COORDINATE SYSTEM  
 CENTRAL TEXAS ZONE, NAD 83 DATUM

MARCH 1, 2011

RUBIE VOLEK

- STEEL PIN FOUND
- ⊗ STEEL PIPE FOUND
- STEEL PIN SET



*Harold L. Shockley*  
**HAROLD L. SHOCKLEY**  
 REG. LAND SURVEYOR  
 NO. 2288, STATE OF TEXAS

GOVERNMENT MATERIAL. USE OF THIS SURVEY FOR ANY  
 PURPOSE OTHER THAN THIS TRANSACTION IS PROHIBITED.  
 THIS SURVEY WAS PREPARED FROM AN ACTUAL SURVEY  
 MADE ON THE GROUND ON THIS DATE.

**VOLEK RANCH**  
**GOLDTHWAITE, TEXAS**  
 814 FM HWY 2005, GOLDTHWAITE, TEXAS

---

**SHOCKLEY ENGINEERING & SURVEYING**  
 200 S. RICE, HAMILTON, TEXAS 70531  
 PH. 254-386-8580

ADAPTED BY BOBBIAN BIRCH