



Advertise

4001 Oleander Ave

4.24 Acres of Commercial Land Offered at \$975,000 USD in Fort Pierce, FL 34982

[Commercial Land](#) / [Florida](#) / [Fort Pierce](#) / [4001 Oleander Ave, Fort Pierce, FL 34982](#)



Call

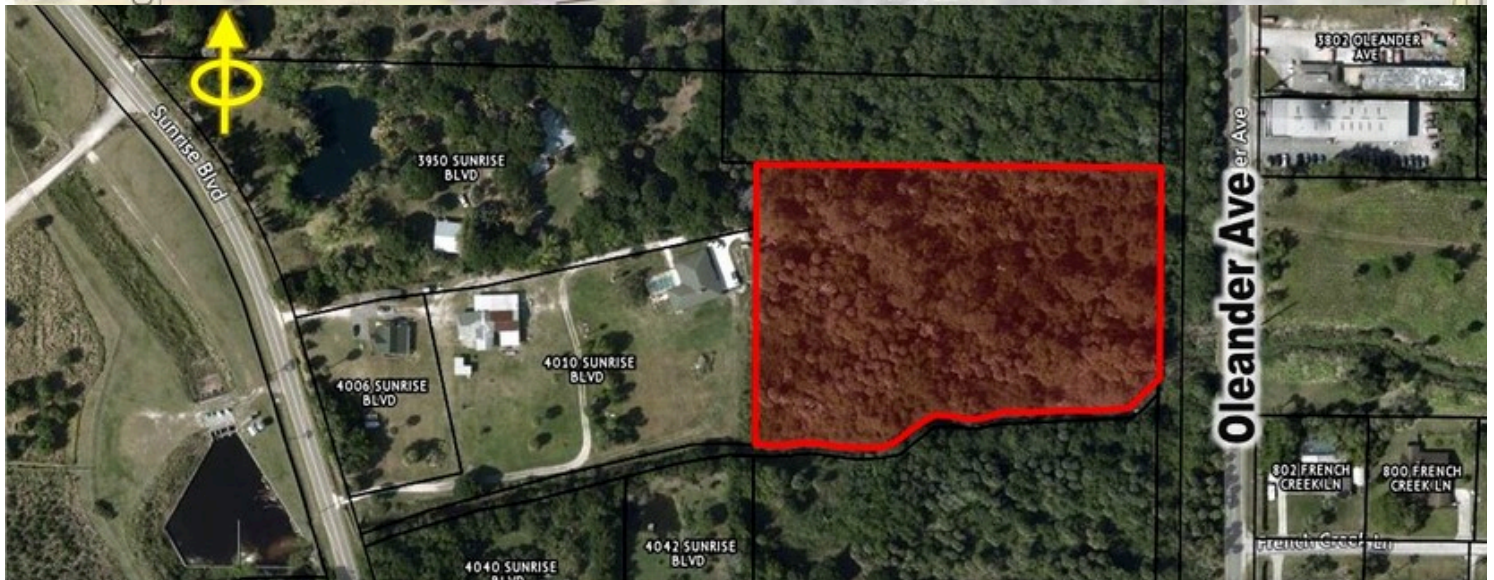
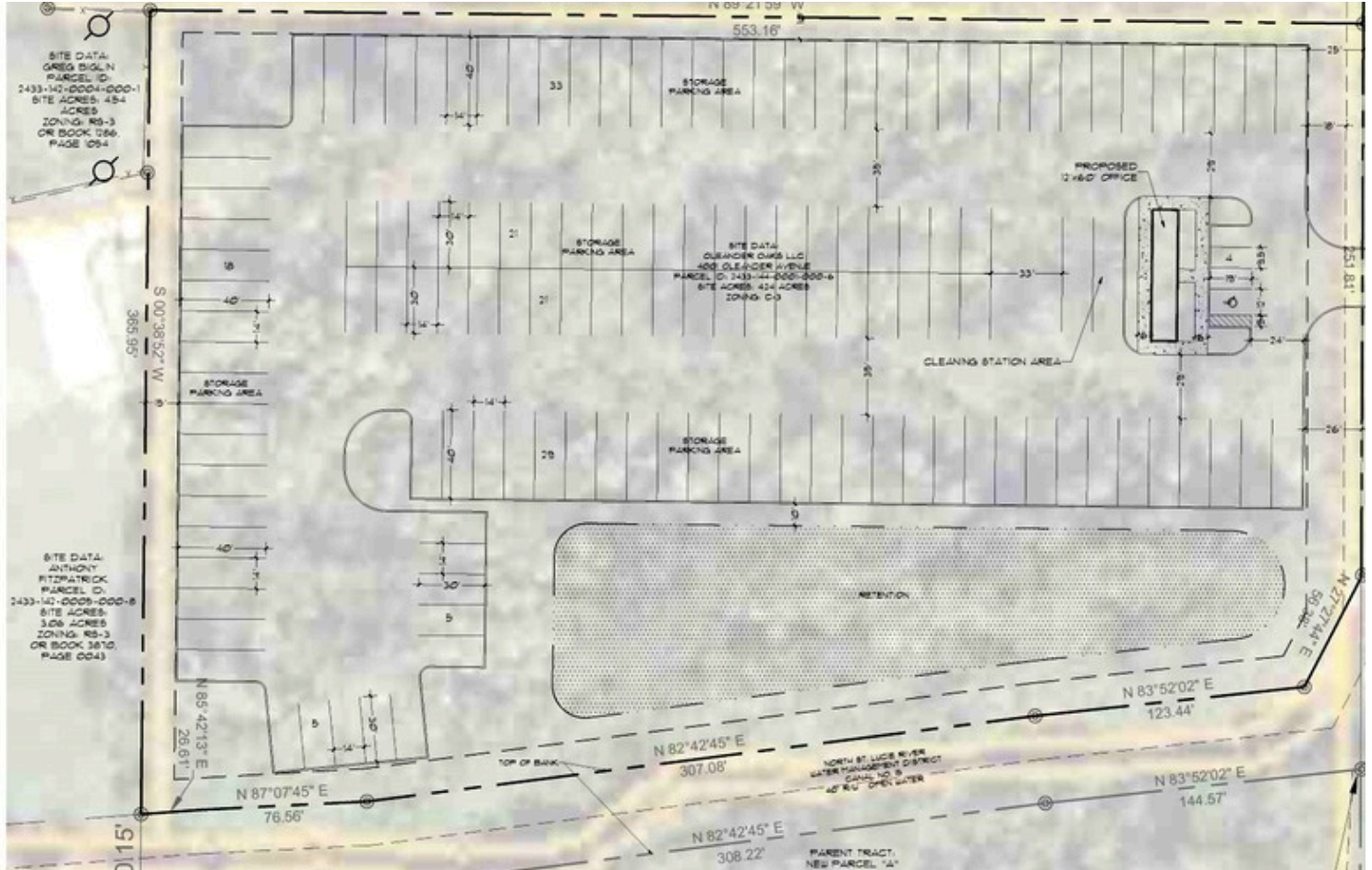
Message



Advertise

4001 Oleander Ave

4.24 Acres of Commercial Land Offered at \$975,000 USD in Fort Pierce, FL 34982



Message



Advertise

4001 Oleander Ave

4.24 Acres of Commercial Land Offered at \$975,000 USD in Fort Pierce, FL 34982



EXECUTIVE SUMMARY

Shovel Ready

PROPERTY FACTS

Price	\$975,000	Property Subtype	Commercial
Sale Type	Investment or Owner User	Proposed Use	Commercial
No. Lots	1	Total Lot Size	4.24 AC
Property Type	Land		

1 LOT AVAILABLE

Lot

Price	\$975,000	Lot Size	4.24 AC
Price Per AC	\$229,953		

33 35 40 THAT PART OF SE 1/4 OF SE 1/4 OF NE 1/4 LYG N OF CANAL NO. 15-LESS RD AND CANAL R/WS- (4.24 AC - 184,694 SF)

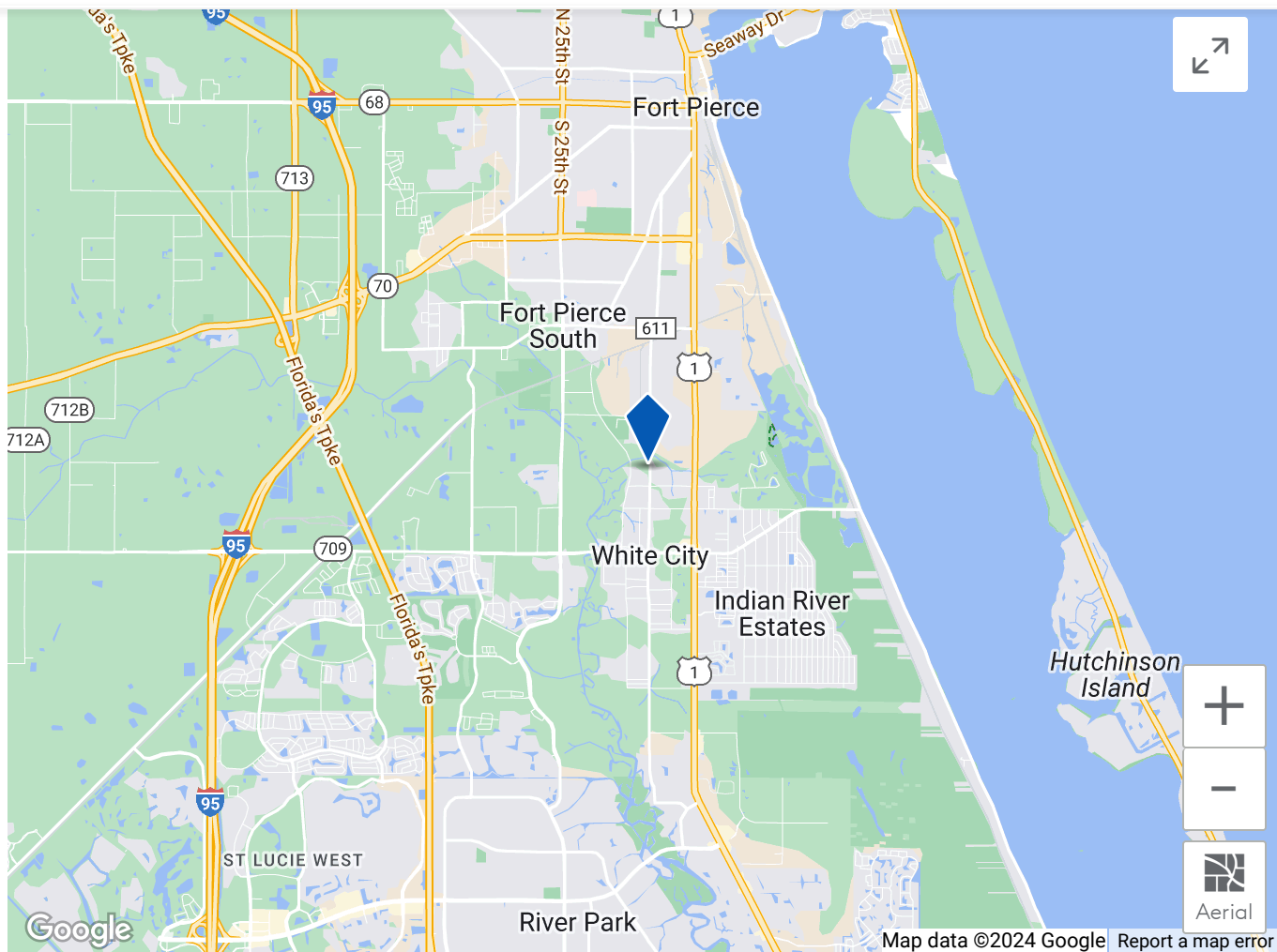
Message



Advertise

4001 Oleander Ave

4.24 Acres of Commercial Land Offered at \$975,000 USD in Fort Pierce, FL 34982



PROPERTY TAXES

Parcel Number	2433-144-0002-000-3	Improvements Assessment	\$0
Land Assessment	\$804,800	Total Assessment	\$804,800

ZONING

Message

[Advertise](#)

4001 Oleander Ave

4.24 Acres of Commercial Land Offered at \$975,000 USD in Fort Pierce, FL 34982

[More public record information on 4001 Oleander Ave, Fort Pierce, FL 34982](#)

The [White City Land Property](#) at 4001 Oleander Ave, [Fort Pierce](#), FL [34982](#) is currently available. Contact Hartman Real Estate for more information.

LAND PROPERTIES IN NEARBY NEIGHBORHOODS

[White City Commercial Land](#)

[Fort Pierce South Commercial Land](#)

[River Oaks Commercial Land](#)

[Fort Pierce North Commercial Land](#)

[St Lucie West Commercial Land](#)

[Waveland-Hutchinson Island Commercial Land](#)

[Indian River Estates Commercial Land](#)

[St Lucie Village Commercial Land](#)

[Downtown Fort Pierce Commercial Land](#)

[North Beach Commercial Land](#)

[Oceanique-Queens Cove Commercial Land](#)

NEARBY LISTINGS

[799 Barrel Ave, Fort Pierce FL](#)

[NW East Torino Parkway & NW Turtle Dove Lane, Port Saint Lucie FL](#)

[755 W Midway Rd, Fort Pierce FL](#)

[3614 Okeechobee Rd, Fort Pierce FL](#)

[CROSSROADS PARKWAY, Fort Pierce FL](#)

[Crossroads Pky, Fort Pierce FL](#)

[3214 Ave D, Fort Pierce FL](#)

[322 Kitterman Rd, Port Saint Lucie FL](#)

[3805 Okeechobee Rd, Fort Pierce FL](#)

Message



Advertise

4001 Oleander Ave

4.24 Acres of Commercial Land Offered at \$975,000 USD in Fort Pierce, FL 34982

The LoopNet service and information provided therein, while believed to be accurate, are provided "as is". LoopNet disclaims any and all representations, warranties, or guarantees of any kind.

About Us

Contact Us

Search

Find a Broker

Product Overview

Mobile

Terms of Use

Privacy Policy

Connect with us



© 2024 CoStar Group

Message