

Building Lots for Sale



**St. Rt. 718
Troy, OH
45373**

Lots 1, 2, 3

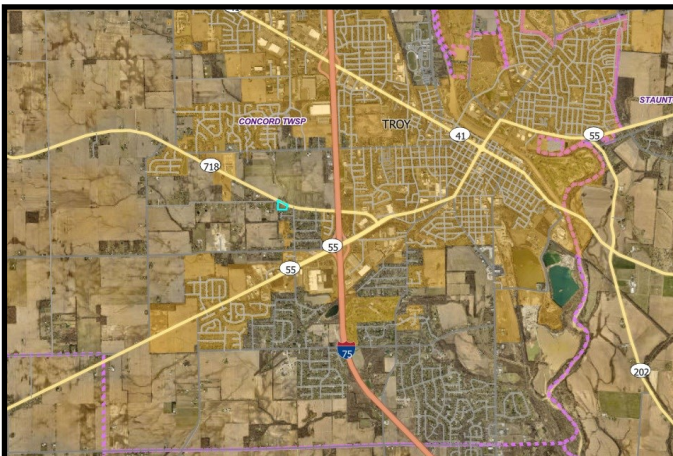
**\$97,500
each**



Build Your Dream Home at Willow Creek!

- Lightly wooded with a creek
- Prime Location & Easy Access
- Custom Home Sites
- Exclusively built by D.A. Bowman Construction

Leis
REALTY CO.
SALES & RENTALS



Dustin Leis
937-423-0916
Dustin @leisrealty.com

Information deemed reliable but not guaranteed. All representations are approximate.
Individual verification is recommended.





Welcome to Willow Creek

Discover the perfect blend of rural charm and modern convenience at Willow Creek, a picturesque community designed for those who appreciate nature and tranquility.

Prime Location & Easy Access

- Nestled among beautiful mature trees with a peaceful, trickling creek
- Located off St. Rt. 718, minutes from I-75 and I-70
- Top-rated schools and premier sports facilities nearby
- Just 14 miles from Dayton International Airport
- Close to Troy, Ohio's vibrant downtown featuring boutiques, breweries, coffee shops, and restaurants

Embrace the Outdoors

- Explore numerous parks and nature preserves
- Enjoy hiking, fishing, and outdoor adventures
- Access the Great Miami River Recreational Trail, offering 350+ miles of paved trails for biking and jogging
- Discover local attractions such as The Waco Air Museum and Aviation Learning Center

Custom Home Sites Available

- Spacious rural lots, perfect for families and outdoor enthusiasts
- Exclusively built by **D.A. Bowman Construction**, a highly-rated custom home builder
- Craft a home that suits your lifestyle with exceptional craftsmanship and a transparent, customer-focused process

Your Dream Home Awaits

Don't miss this rare opportunity to build your perfect home in the serene setting of Willow Creek. Schedule a consultation with **D.A. Bowman Construction** today and take the first step toward making your dream a reality.

For more information, contact us today!

Information deemed reliable but not guaranteed. All representations are approximate. Individual verification is recommended.

