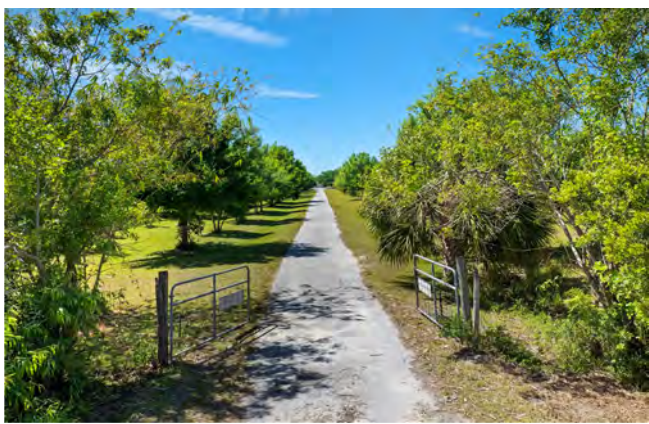


2,240sf Home on 31.37 acres



\$1,200,000.

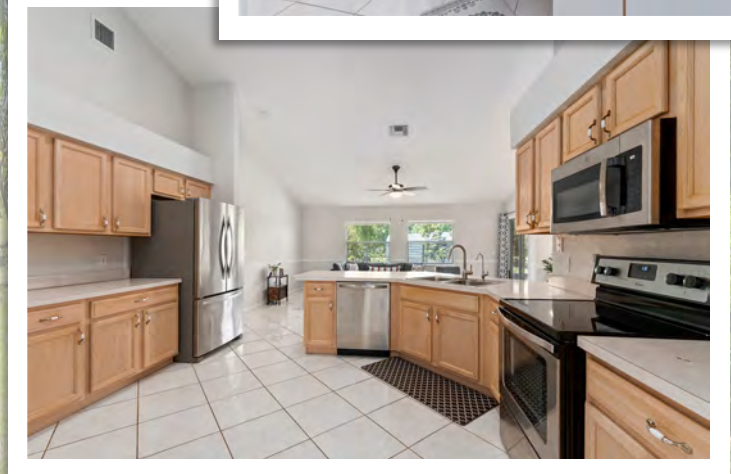
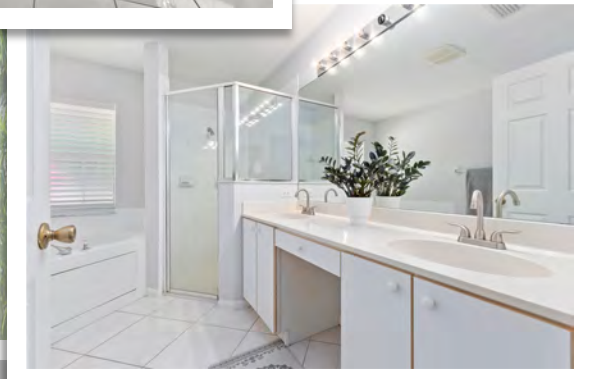
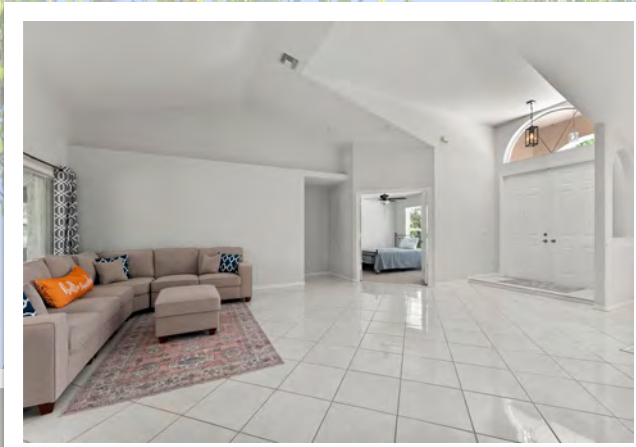
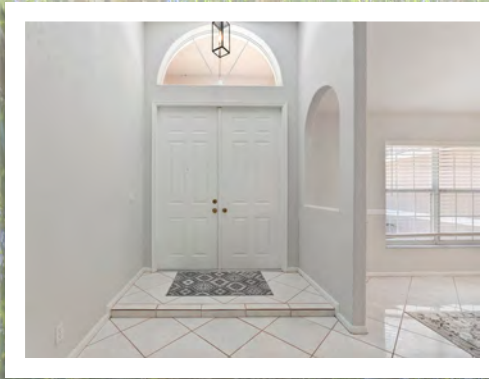


- 2,240sf (3,373sf gross) 4 BR / 2 Bath / 2 car Garage
- Open Floorplan • Split BRs • Tile & Carpet Floors
- Kitchen with Eat-at Counter + Nook & Dining Rm
- Huge Screened Porch overlooking Spacious Yard
- Oak Shaded Asphalt Driveway & Circular Parking
- Property has many varieties of Tropical Fruit Trees

11811 Range Line Rd, Fort Pierce, St. Lucie County 34987
MLS # RX-11076688 • See also on Realtor.com & Zillow

Call, Text or email us for Viewing Appointment:
O: 772.468.8306, Cell: 772.201.5650 ~ mark@waltersco.com

W mark walters
& company
real estate brokers & auctioneers
& CO. www.WaltersCo.com



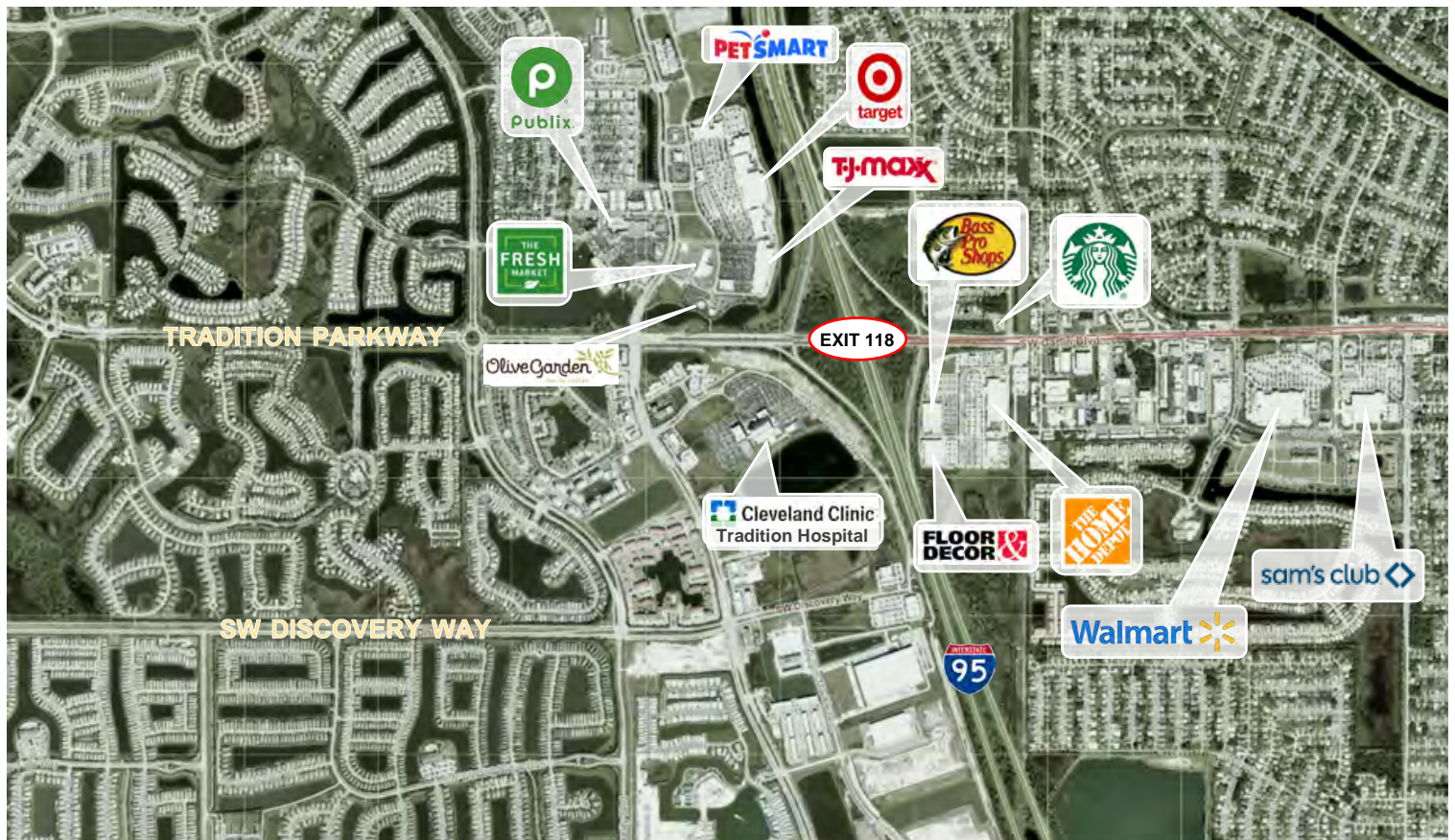
11811 Range Line Rd, Port St. Lucie, FL GPS: 27.249585, - 80.481225

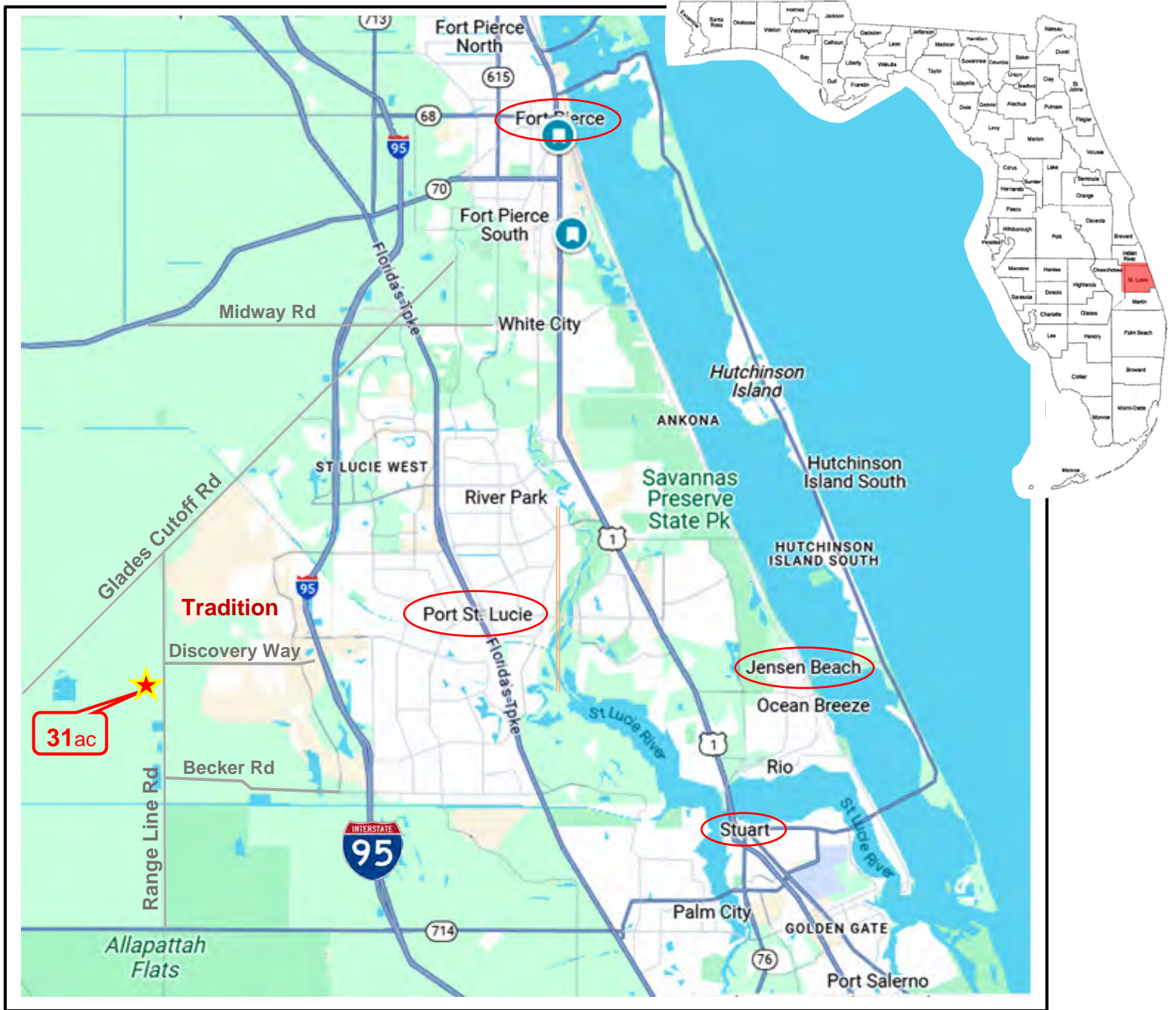
This unique 31.37ac property is at the western boundary of the fastest growing area of St. Lucie County, nestled between "Tradition" Master Planned Community and the 3,100ac "McCarty Ranch Preserve". The 4/2/2 home built in 2002 is located 900ft west of Range Line Rd. The oak lined asphalt entrance drive leads to a concrete circular driveway & parking area at front of home. This setback provides privacy and a peaceful quiet setting for the residence.

The open floor plan, vaulted ceiling 4 BR / 2 BA CBS home w/ 2 Car Garage has one flex use room suitable as either a bedroom or an office. The roomy central kitchen has direct access to all living areas making the home ideal for entertaining. A spacious 590sf screened porch has entries from three rooms and a wide view of the partially shaded back yard.

The land has two wonderful features: a tropical fruit tree and oak grove (9.3ac) at front of property and a secluded reserve (22ac old-Florida habitats) at the rear/west. The reserve is accessed by a private, perpetual easement around a wetland between the grove and the reserve.

St. Lucie County is constructing new schools nearby: Legacy High School in Tradition, opening August 2025, and Western Grove K-8 expected to open in August 2026. Cleveland Clinic Tradition Hospital, shopping, grocery stores hotels and banks are all nearby in Tradition and Saint Lucie West.





31.37ac Parcel with Home:

