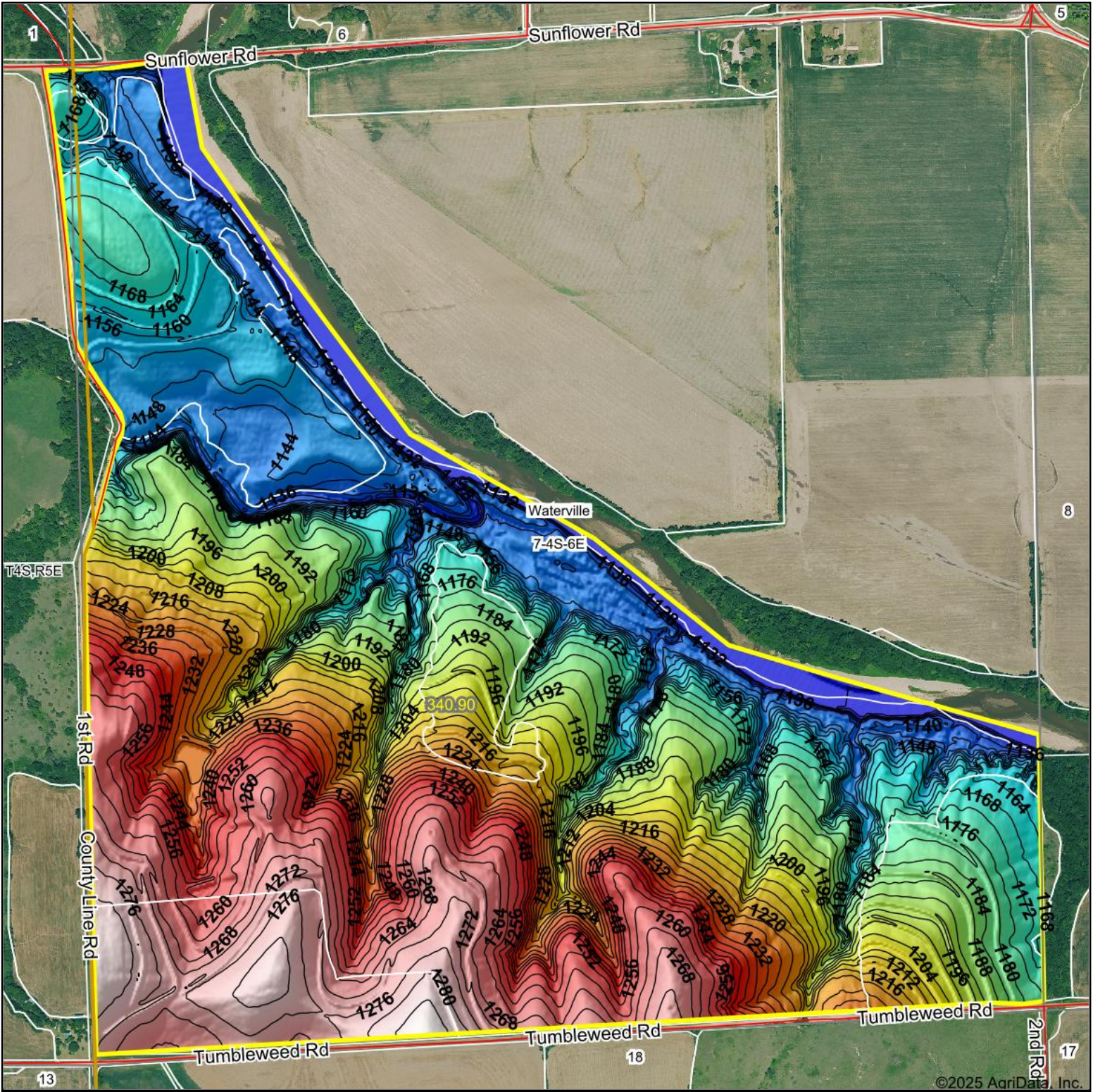


Topography Hillshade



<p>Low Elevation High</p>	<p>Source: USGS 3 meter dem Interval(ft): 4 Min: 1,122.4 Max: 1,287.1 Range: 164.7 Average: 1,202.0 Standard Deviation: 47.15 ft</p>	<p>0ft 824ft 1647ft</p> <p> 2/12/2025 7-4S-6E Marshall County Kansas Boundary Center: 39° 43' 7.04, -96° 47' 52.45 </p>
---------------------------	--	--

Maps Provided By:

CUSTOMIZED ONLINE MAPPING
 © AgriData, Inc. 2023 www.AgriDataInc.com
 Field borders provided by Farm Service Agency as of 5/21/2008.

©2025 AgriData, Inc.