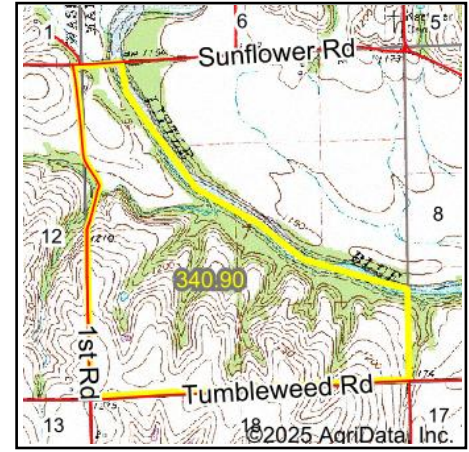
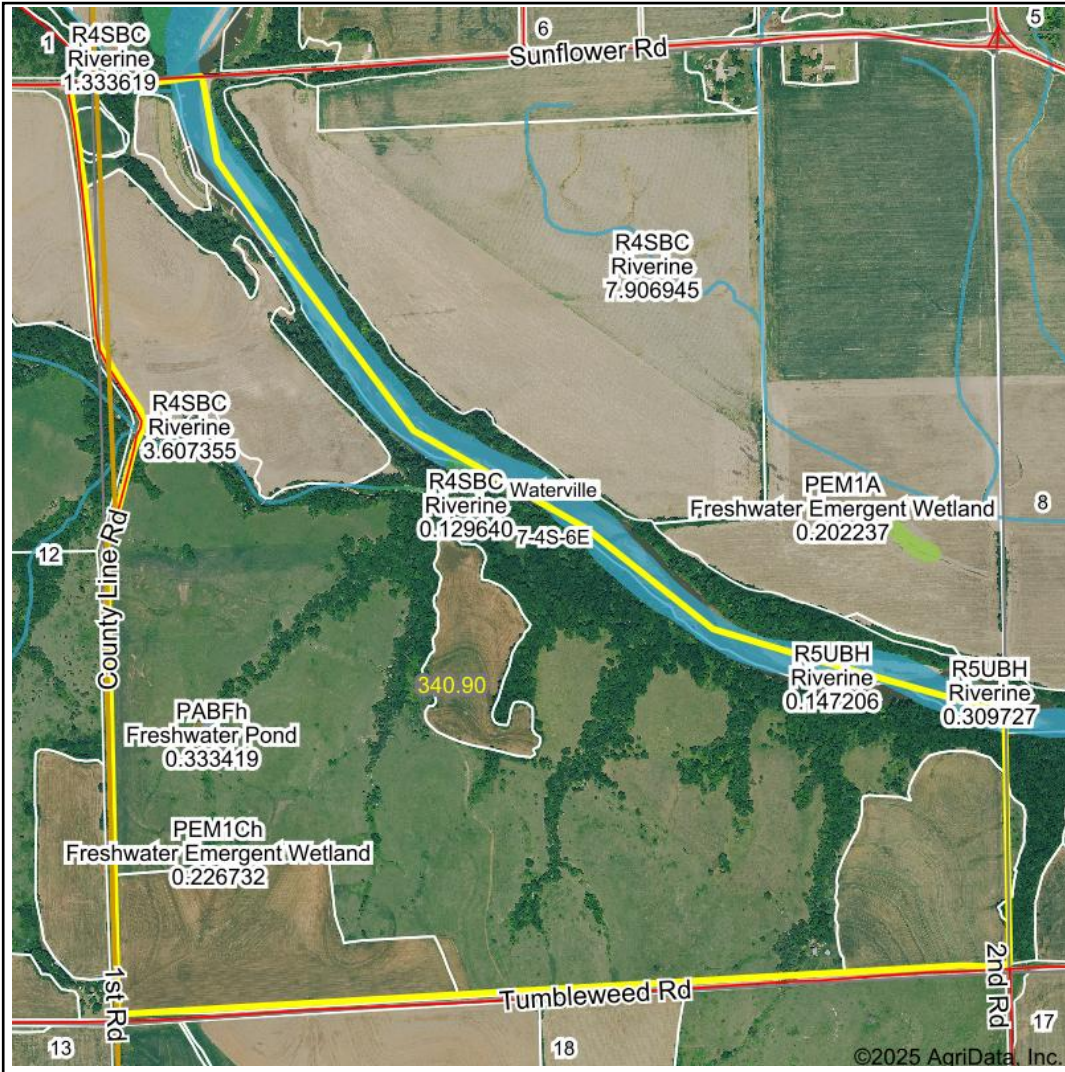


Wetlands Map



State: **Kansas**
 Location: **7-4S-6E**
 County: **Marshall**
 Township: **Waterville**
 Date: **2/12/2025**



Maps Provided By:



© AgriData, Inc. 2023 www.AgriDataInc.com



0ft 1242ft 2483ft

Classification Code	Type	Acres
R2UBG	Riverine	12.29
R4SBC	Riverine	1.01
PFOA	Freshwater Forested/Shrub Wetland	0.87
PABFh	Freshwater Pond	0.33
PEM1Ch	Freshwater Emergent Wetland	0.23
R5UBH	Riverine	0.15
Total Acres		14.88

Data Source: National Wetlands Inventory website. U.S. DoI, Fish and Wildlife Service, Washington, D.C. <http://www.fws.gov/wetlands/>